

You are Invited!

SDAG

Holiday Party!



Traditional Talk by
TOM DEMERE
Curator of Paleontology
SDNat

WEDNESDAY - DEC 14th
SD Natural History Museum

6 PM - COCKTAIL HR.

7 PM - DINNER

8 PM - PROGRAM

MEMBERS: \$60

NON MEMBERS: \$70

STUDENTS: \$30

Includes Italian Buffet and 1 drink ticket

PLEASE RSVP [HERE](#)

SPONSORED BY



SDAG *Newsletter*

Hello All!

We are so excited to announce our December Holiday Meeting!

It will be held at our traditional venue, the San Diego Natural History Museum, Wednesday December 14th at 6 pm. Kindly RSVP as soon as possible to help us with the final details for the event. Please RSVP [HERE](#)

PRESIDENT's CORNER

Hello SDAG Members!

I hope this newsletter finds you all in the holiday spirit!

It's my favorite time of the year and I couldn't be more excited to be back for our annual meeting at the Natural History Museum with Tom Demere!

As usual Tom is keeping the topic of his discussion a secret (which is half the fun, to be honest), but it is sure to be both very cool and very informative. How lucky we are to have a tradition like this!

A big thank you to Eldon Gath for speaking last month and telling quite the story! That man has a dream job for Geologists.

A couple big announcements will be put out at the meeting this month. We will be voting in and announcing our 2023 SDAG officers and awarding student scholarships!

And, as always, don't forget to fill out and send in your membership forms (and sponsorship forms, too)! We will also be collecting forms and payments for 2023 renewals at this meeting.

Lastly, we want to give everyone a heads un on price increase for next year's meetings due to the hike in prices we have seen in the last few months. We will make our best efforts to keep pricing as low as possible.

Cheers,
Luke Weidman



SDAG *Newsletter*

SCHOLARSHIP AWARDS

CONGRATULATIONS to our 2022 scholarship recipients! We will be welcoming them at our meeting to present them with a \$1000 award.

These awardees will be presented a check for \$1,000 each during the SDAG program. They will also be giving an oral presentation of their research results at a spring dinner meeting of SDAG. If you see them during the social hour/dinner, please be sure to congratulate them.



SDAG 2022 Undergraduate Awardee SDGS Scholarship Fund:

THE GEOLOGICAL
SOCIETY OF AMERICA

Y

THE
GEOLOGICAL
SOCIETY OF AMERICA

TY



THE GEOLOGICAL
SOCIETY OF AMERICA

GEOLOGICAL
SOCIETY OF AMERICA

ADAN SILVA

SDSU Student

Dr. Rafael Almeida

SDSU Undergraduate Thesis Advisor

“Analysis of the depositional stratal geometry of the Fish Creek-Vallecito Basin in the Anza-Borrego desert, Southern California.”

Adan was born in San Diego and grew up playing baseball in Tijuana.

He is a big fan of sports (Go Padres) and he likes trying new foods.



Jasmine Peach

www.sandiegogeologists.org

SDAG *Newsletter*

Walawender Scholarship Fund

SDAG/SDGS established this fund after Dr. Michael J. Walawender passed away in 2011. Scholarships are provided as monies allow. Mike was a professor of Geological Sciences at SDSU for 32 years prior to his retirement. He was head of the Department of Geological Sciences from 1989-1995. Mike supervised nearly 100 Masters and Bachelors theses on a wide variety of topics generally centered on the nature and origin of the Peninsular Ranges Batholith.

He is author of the book “The Peninsular Ranges: A Geological Guide to San Diego’s Back Country” which was first published by Kendal Hunt in 2000, then updated and published by SDAG/SDGS in 2022. Mike is known for his talk titled Mud to Magma, the evolution of gem pegmatites in Southern California.

JASMINE PEACH

SDSU Masters Student & 5th awardee of the Walawender Scholarship Fund.

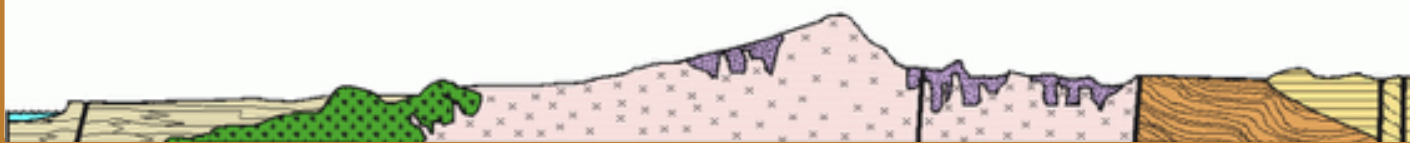
Dr. Rafael Almeida and Dr. David Kimbrough, SDSU Faculty Advisors.

“Structural, petrological, and geochronological characterization of the Mesozoic high-grade metamorphic rocks of the Cordillera Real in the Pimampiro-Monte Olivo-Sigsipamba Area of northern Ecuador.”



Jasmine is a 2nd year Geoscience master’s student at San Diego State University, where she also received her bachelor’s degree. Her favorite areas of study are tectonics and field geology and sharing those passions with students as a teaching assistant and mentor. She has participated in international studies and research in the countries of Argentina, Ecuador, and Turkey. Her hope for the future is to work as a field geologist in remote, unique places around the world.

In her spare time, she enjoys hiking, snowboarding, painting, and binge-watching Netflix with her husband.



SDAG *Newsletter*

SDAG OFFICERS VOTE

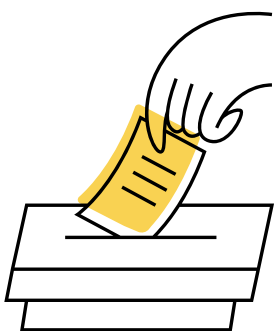
This month we will be resuming our SDAG officer's vote.

We did not have elections the past 2 yrs due to COVID but we are looking forward to resume our normal system.

If you like , you may pre-fill the ballot below. We will also have blank forms at the meeting.

The 2023 officers will be announced after the program at the meeting.

If you would like to serve as SDAG officer in future years, please let our 2023 officers know.



President

Luke Weidman___ Write-in_____

Vice President

John Teasley___ Write-in_____

Secretary

Mariana Aguilar___ Write-in_____

Treasurer

Neil Seitz___ Write-in_____



SDAG *Newsletter*

ONE STOP WONDER



Hi SDAG folks!

On Saturday December 10, 2022, starting at 10am we are doing a One Stop Wonder (OSW) to look at another unique geologic feature. The site is in Carlsbad, east of the I-5 a short distance off of Cannon Road, intersection with College Blvd. **Stephen Jacobs** will lead us to observe an outcrop of unmapped (probable) Lusardi Formation.

A couple items for the morning meet up:

- **PARKING** - We will be on a popular hiking trail and parking can sometimes be limited. The attached flyer includes 2 parking options. The first option is a pullout with parallel parking next to Cannon Road. If there is no parking available, please proceed to the 2nd Choice parking area.
- **HIKE** - We will gather along Cannon Road as noted and proceed to the trail which is next to Sage Creek High School. The trail is mostly gentle to moderate terrain, however, there is an incline section with abundant rock and it is a rough surface for some distance. Even though it is a short hike is not recommended for those that cannot manage uneven terrain.

Bring water and coffee, as appropriate, for this 2 to 3 hour OSW.

See you there!

Monte Murbach and the OSW crew.

PLEASE REFER TO THE ATTACHED FLYER FOR MAP & MORE INFORMATION

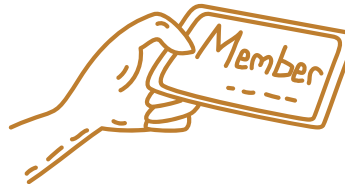


Jasmine Peach

www.sandiegogeologists.org

SDAG *Newsletter*

2023 MEMBERSHIPS



It is that time of the year again! Time to renew our SDAG Memberships.

We ask that you take the time to renew your membership for 2023 and if you have not renewed it in a while, this is a great time to resume!

We have made it even easier for you to renew! - now you can fill the form on our website and submit payment electronically! So, if you are anything like me (hardly ever make it to the mailbox) this just makes it so convenient!

If you prefer to to renew with a check, there are 2 ways:

1. We will have forms at the check in table at our next meeting.
2. You can download the form using the link below and mail it or bring it to the meeting.

Your membership dues help funds help with scholarships, publications and on occasion cover some of the cost of the meetings. Your contributions are so important to us ! PLEASE RENEW.

ELECTRONIC MEMBERSHIP RENEWAL



DOWNLOAD PDF FORM



Jasmine Peach

www.sandiegogeologists.org

SDAG *Newsletter*

SDAG RESEARCH TOOL

A comprehensive listing of all papers published by SDAG, whether as annual field trip guidebooks or special publications, is available on our website.

Entries are sorted by primary author, or chronologically by date of publication, starting with our first guidebook in 1972 out to Calico and the Mojave Desert, and finally up to the San Diego's Back Country in 2022.

The papers can be accessed or downloaded as .pdf files. They are fully searchable in Adobe Reader or Acrobat, so if you are researching a topic, "oikocryst" for example, you can search for that keyword. This listing will be updated as new books are published. Thanks to Greg Cranham and Hargis + Associates, Inc., for making this possible. See the links below:

[SEARCH BY AUTHOR](#)

[SEARCH CHRONOLOGICALLY](#)

SDAG PUBLICATIONS



We many wonderful publications available for sale!

Please visit the **[SUNBELT PUBLICATIONS WEBSITE](#)** for more details.



www.sandiegoeologists.org

SDAG *Newsletter*

Support SDAG while you shop!



What is AmazonSmile?

AmazonSmile is an automatic way for you to support the “San Diego Geological Society” (SDGS) SDAG’s 501(c)(3) as your favorite public charitable organization every time you shop on Amazon at no cost to you at smile.amazon.com.

How do I select a charitable organization to support when shopping on AmazonSmile?

On your first visit to AmazonSmile smile.amazon.com, you need to select a charitable organization to receive donations from eligible purchases before you begin shopping. Please select the San Diego Geological Society. Amazon will remember your selection, and then every eligible purchase you make at smile.amazon.com will result in a donation to SDGS (SDAG).

How much of my purchase does Amazon donate?

The AmazonSmile Foundation will donate 0.5% of the purchase price from your eligible AmazonSmile purchases.

How can I learn more about AmazonSmile?

Please see complete AmazonSmile program details.



www.sandiegogeologists.org

SDAG *Sponsors*



Diamond
⊕



HARGIS+ASSOCIATES, INC.
HYDROGEOLOGY • ENGINEERING



\$2,500 Anonymous Sponsor

for Dr. Mike Walawender's Peninsular Ranges Book Reprint

Kuper Consulting, LLC



Ruby



Emerald

- Joel R. Bryant – San Diego Elder Abuse Attorney [WEBSITE LINK](#)
- Dawson & Rosenthal, P.C. [WEBSITE LINK](#)
- Doan Law Firm [WEBSITE LINK](#)
- Phil Farquharson [WEBSITE LINK](#)
- Eldon Gath, Earth Consultants International [WEBSITE LINK](#)
- Estey & Bomberger, LLP [WEBSITE LINK](#)
- Cari Gomes – Pinao Consulting [WEBSITE LINK](#)
- Stan Helenschmidt
 - Helenschmidt Geotechnical, Inc. [WEBSITE LINK](#)
- Ed Hernandez [WEBSITE LINK](#)
- HomeLight Inc. [WEBSITE LINK](#)
- Chris Livesey [WEBSITE LINK](#)
- Pacific Drilling – Tod Clark [WEBSITE LINK](#)
- Estey & Bomberger, LLP [WEBSITE LINK](#)
- Dr. Pat Abbott - SDSU Prof. of Geology, Emeritus [WEBSITE LINK](#)
- Lowell Lindsay and Diana Lindsay
 - Sunbelt Publications/AESE [WEBSITE LINK](#)
- Dr. Monte Marshall
 - SDSU Prof. of Geology and Geophysics, Emeritus [WEBSITE LINK](#)
- Jennifer Morton – Terramar Environmental
- Monte and Diane Murbach -Murbach Geotech
- Greg Cranham – Consulting Geologist
- Dr. Margaret R. Eggers, CHG -Eggers Environmental, Inc.
- Geotechnical Exploration, Inc.
- Carolyn Glockhoff - Caro-Lion Enterprises
- Porch Group - [WEBSITE](#)
- Inspection Support Network
 - [WEBSITE](#)
- Rob Hawk
- Dr. Vic Camp
- Joe Coronas
- Kip Hering
- Tom Lamb
- Gerald Shiller
- Scott Snyder
- David and Janis Steller
- Dr. Anne Sturz
- John Teasler
- Randy Wagner
- Mary Walke, Clint Williams
- Carole L. Ziegler
- Anonymous Sponsor



www.sandiegoeologists.org