

SDAG

Meeting Announcement

WEDNESDAY February 16th 2022

HAPPY HR: 6:30 PM

MEETING: 7:00 PM

Zoom Meeting: [CLICK HERE](#)

Meeting ID: 889 0778 1865

**TITLE: The Great Geological Perils of Portugal:
Quiet now, big later...**



**BY: Isabelle Sacramento-McJilton
M.S. – Geological Sciences, 1999 – SDSU**

SDAG

Meeting Announcement

TITLE: The Great Geological Perils of Portugal:
Quiet now, big later...

ABSTRACT

Portugal - a tiny country, tucked in westernmost Europe, along mostly a passive continental margin, but one that experienced one of the strongest earthquakes in Europe of historical times, which in fact changed the course of scientific inquiry. Are they ready for another one?... Its mid-Atlantic islands, the Azores volcanoes and crater lakes, a beautiful and lush paradise, exhibit powerful eruptions little known to people in general, but which too can deliver death and destruction to nearby towns.

In this talk we'll discover the geological hazards of Portugal and the gigantic release of energy that can follow; humans just get in the way of that release of energy and then call it a natural disaster.



SDAG

Meeting Announcement

BY: Isabelle Sacramento-McJilton

M.S. – Geological Sciences, 1999 – SDSU

BIOGRAPHY:

Lecturer in lower and upper division courses for majors and non-majors at SDSU for over 20 years.

A celebrated educator who brings modern instructional technology to the classroom, she teaches classes like Earth Science, Natural Disasters, Environmental Science, and Oceanography, with extensive curriculum development. Focus and expertise is in Geosciences Education for future teachers, as well as Natural Disasters.

Central pedagogy methods include inquiry-based learning and peer instruction. Her students consistently rate her classes are the “best that they’ve taken at SDSU” and her evaluations are near the top of her department. Awards received include Outstanding Faculty award as most influential university professor, several Favorite Faculty awards, Mortar Board award, and student evaluation awards at RateMyProfessor.com.

Isabelle has been an invited Lecturer in symposiums in Portugal - universities in Lisbon, on Natural Disasters, and also at the Luso-American Education Foundation conference, the Natural History Museum in San Diego, in SDSU programs like Freshman for a Day, and in the SDSU Center for Teaching and Learning, where she’s an active participant.



SDAG

Meeting Announcement

PRESIDENT'S CORNER

Hello SDAG Members!

Many thanks to everybody that attended last month's meeting! A very big thank you to Norrie, who is always such a pleasure, for providing us with a wonderful talk. I always learn something new from Norrie.

This month we remain virtual and are very happy to welcome Sacramento-McJilton to speak on the geology of her home country: The Great Geological Perils of Portugal: Quiet now, big later...

I'm excited for this one. Isabelle is a long time professor at SDSU and is well known and liked amongst the student body. Her love of geology is palpable and I'm very pleased that she is help share that with you. So, please join us on the 16th and show Isabelle some love!

Cheers,
Luke Weidman

SDAG 2022 OFFICERS

PRESIDENT:	Luke Weidman	lcweidman@gmail.com
VICE-PRESIDENT:	Keith Kastama	keithkastama@gmail.com
SECRETARY:	Athena Catanzaro	athenacatanzaro@gmail.com
TREASURER:	Mariana Aguilar	petishu@gmail.com



SDAG

Meeting Announcement

Next Meeting

Wednesday, March 17th 2021

***Meetings are usually held on the 3rd Wednesday of the month. This may change to accommodate the speaker and meeting place schedules. Please check the SDAG website for updates.

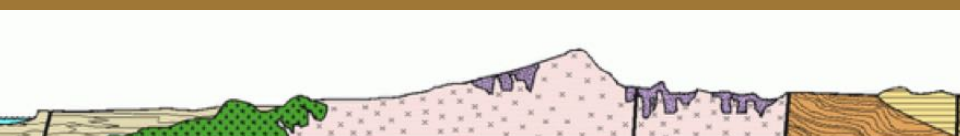
Please submit job postings to:

secretary@sandiegogeologists.org

For Updated Job Postings, please click [HERE](#)

CALL FOR PHOTOS!

We would love to see what you Are Up to!
Please send photos to Athena Catanzaro
athenacatanzaro@gmail.com



SDAG Sponsors

THANK YOU SPONSORS !!!



Diamond



HARGIS+ASSOCIATES, INC.
HYDROGEOLOGY • ENGINEERING



Kuper Consulting, LLC



Ruby

GEOBRUGG



Leighton
60th Anniversary



Emerald

- [Dr. Pat Abbott](#) - SDSU Prof. of Geology, Emeritus
- [Dr. Vic Camp](#)
- Joe Coronas
- Greg Cranham - Consulting Geologist
- Dr. Margaret R. Eggers, CHG - [Eggers Environmental, Inc.](#)
- Karen Evans for Jim Evans (deceased)
- Phil Farquharson - [Geology Guy](#)
- [Eldon Gath, Earth Consultants International](#)
- Geotechnical Exploration, Inc.
- Carolyn Glockhoff - [Caro-Lion Enterprises](#)
- Rob Hawk
- Kip Hering
- Ed Hernandez - [Project X Corrosion](#)

- Joel R Bryant
- Tom Lamb
- Lowell E. Lindsay and Diana Lindsay - [Sunbelt Publications](#)
- Dr. Monte Marshall - SDSU Prof. of Geology and Geophysics, Emeritus
- Jennifer Morton - [Terramar Environmental](#)
- Monte and Diane Murbach - [Murbach Geotech](#)
- [Pacific Drilling Co.](#) - Tod Clark
- Gerald Shiller
- [Scott Snyder](#)
- David and Jan Steller
- Dr. Anne Sturz
- Randy Wagner
- Mary Walke
- Carole L. Ziegler
- Anonymous