



## SAN DIEGO ASSOCIATION OF GEOLOGISTS

[www.sandiegogeologists.org](http://www.sandiegogeologists.org)

### SDAG MEETING ANNOUNCEMENT

*WEDNESDAY April 21st*

6:30 PM - Happy Hour

7:00 PM - Meeting Begins

\*\*\* *VIRTUAL MEETING* \*\*\*

#### *Join Zoom Meeting*

[https://us02web.zoom.us/j/85798184239?](https://us02web.zoom.us/j/85798184239?pwd=SHI4S3FIRTVVV1hQM0pJekZ1MUxZdz09)

[pwd=SHI4S3FIRTVVV1hQM0pJekZ1MUxZdz09](https://us02web.zoom.us/j/85798184239?pwd=SHI4S3FIRTVVV1hQM0pJekZ1MUxZdz09)

Meeting ID: 857 9818 4239

Passcode: 461844

#### *Note:*

The same link will be used for all  
2021 meetings  
Hosted by SDAG



**San Diego Regional Chapter**  
Earthquake Engineering Research Institute

### REPLAY - EERI SD Chapter Webinar Series

### NEW AND REVISED ALQUIST-PRIOLO EARTHQUAKE FAULT ZONES IN SAN DIEGO

#### SPEAKERS:

- 1) Prof. Thomas Rockwell (San Diego State University)
- 2) Timothy Dawson (California Geological Survey)
- 3) Michael DeFrisco (California Geological Survey)
- 4) Discussion Q&A. Moderator: Dr. Jorge Meneses



Thomas Rockwell  
Professor  
San Diego State University



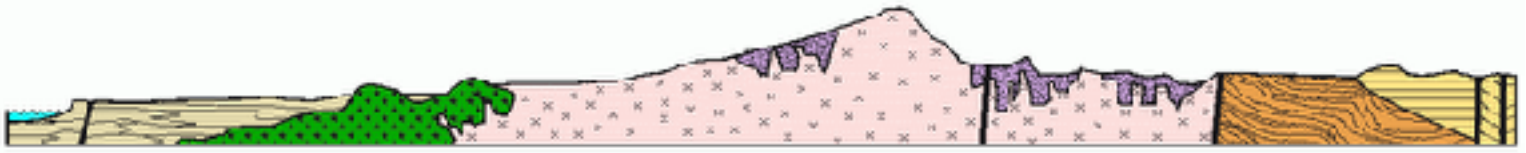
Timothy Dawson  
Senior Engineering Geologist  
California Geological Survey



Michael DeFrisco  
Engineering Geologist  
California Geological Survey



Jorge Meneses  
Principal Geotechnical  
Engineer, EERI San Diego  
Chapter President  
RMA



## SAN DIEGO ASSOCIATION OF GEOLOGISTS

[www.sandiegogeologists.org](http://www.sandiegogeologists.org)

### ABSTRACT

On February 18, 2021, the California Geological Survey (CGS) released preliminary review maps of proposed new and revised Alquist-Priolo Earthquake Fault Zones to the City and County of San Diego ([click here](#)).

The City of San Diego has also posted the announcement [here](#).

The February 18, 2021 release date begins a 90-day public comment period to provide technical review comments on the proposed Earthquake Fault Zone maps. Comments should be sent to the State Mining and Geology Board before May 19th, 2021, and should be addressed to:

Jeffrey Schmidt, Executive Officer  
State Mining and Geology Board  
801 K Street, MS 20-15  
Sacramento, CA 95814-3528  
Email: [smgb@conservation.ca.gov](mailto:smgb@conservation.ca.gov)  
Phone: (916) 322-1082

The State Mining and Geology Board (SMGB) will hold a public hearing near the end of the 90-day review period. For more information on the date and location of the public hearing, contact the SMGB by visiting [www.conservation.ca.gov/smgb](http://www.conservation.ca.gov/smgb).

The EERI San Diego Chapter organized this webinar to provide background and further information on these new and revised maps.



## SAN DIEGO ASSOCIATION OF GEOLOGISTS

[www.sandiegogeologists.org](http://www.sandiegogeologists.org)

### ***SPEAKER BIO***



**Jorge F. Meneses, Ph.D.**  
**EERI - Board of Directors - Director**  
**Term: 2019 – 2022**

#### **Biography**

Jorge F. Meneses, Ph.D., P.E., G.E., D.GE, F.ASCE, Principal Geotechnical Engineer, RMA Group, Inc., has more than 30 years of consultancy, project management, research, and teaching experience, in both private industry and research institutions in the field of geotechnical and earthquake engineering. He has been involved in numerous projects serving as a technical lead in geotechnical earthquake engineering and foundation engineering across the country and various markets including water, nuclear, transportation, high rise buildings, energy, schools, hospitals, commercial and industrial.

Dr. Meneses frequently acts as a peer reviewer for technical conferences and technical journal publications, is a guest speaker for domestic and international conferences, and has published more than 60 technical publications. He is currently a part-time faculty member in the graduate school of San Diego State University. He is the President and Founder of the Earthquake Engineering Research Institute (EERI) San Diego Chapter, California Seismic Safety Commissioner, Honorary Chair of the ASCE Geo-Institute San Diego Chapter, Member of the ASCE 7-16 (Minimum Design Loads for Buildings and Other Structures) and ASCE 1 (Geotechnical Analysis, Design, Construction, Inspection and Monitoring of Nuclear Safety-Related Structures) Committees, member of the Industry Advisory Board, Department of Structural Engineering (University of California San Diego), member of the Academy of Geo-Professionals, and a Fellow of the American Society of Civil Engineers (ASCE).



## SAN DIEGO ASSOCIATION OF GEOLOGISTS

[www.sandiegogeologists.org](http://www.sandiegogeologists.org)

### SPEAKER BIO



**Thomas Rockwell, Ph.D.**  
**Professor of Geology, SDSU**

#### **Biography**

Dr. Thomas Rockwell is a nationally and internationally renowned paleoseismologist and structural geologist who has published over 120 articles in major international journals, coauthored a number of book chapters, published 40 papers in conference proceedings and guidebooks, and coauthored over 300 papers presented at professional meetings. Having served as Geology Group Leader for the Southern California Earthquake Center for many years, he is an expert on the tectonics and earthquake hazards of southern California and Baja California, has conducted extensive trenching programs to date earthquakes on faults in the western U.S., South and Central America, the Middle East and Asia, and routinely uses soil stratigraphy and geomorphology combined with various radiometric dating techniques to assess rates of fault activity, determine recency of faulting, and date past earthquakes. In the past decade, he has initiated a number of ground-breaking studies on fault zone architecture and processes in southern California with PhD students Ory Dor and Neta Wechsler, as well as with many MS-level students. New work on fault zone damage, pulverization, and fluid processes has resulted in over a dozen well-cited papers on this topic since 2006. His other research focuses on understanding earthquake occurrence in time and space. Current projects include the characterization of fault systems behavior by understanding patterns of past recurrence of large earthquakes on faults in southern California, northern Mexico, Panama, Argentina, Portugal, Spain, Turkey, India, and Israel. This work includes resolving information on slip per event, as it relates to understanding the controls on segmentation and rupture termination. Current work on fault zone processes initially focused on damage characteristics, but has shifted to the role of fluids and the processes that produce the damage. He has also worked extensively on the affects of tectonism on the landscape, and using geomorphology to constrain rates and timing of tectonic events. Included in this latter aspect is detailed mapping and dating of marine terraces along the west coast of North America and assessment of paleosea level during the late Quaternary.



## SAN DIEGO ASSOCIATION OF GEOLOGISTS

[www.sandiegogeologists.org](http://www.sandiegogeologists.org)

### SPEAKER BIO



**Timothy Dawson**

California Geological Survey  
Senior Engineering Geologist, Fault Zonation  
Program  
Expertise: Paleoseismology, neotectonics,  
earthquake geology

### REPLAY!

*Did you miss last month's meeting? No Problem!!!*

Please **CLICK HERE** to watch a recording of  
last month's meeting. **PSWD: 5+Y5m?h@**

**PLEASE NOTE:**

The recording starts at the beginning of Barry Keller's talk.

**TITLE: Sediment Transport in the San Francisco Bay  
Estuarine System**

### UPCOMING EVENTS

*Next Meeting:* **Wednesday, May 19th 2021**

\*\*\*Meetings are usually held on the 3<sup>rd</sup> Wednesday of the month.  
This may change to accommodate the speaker and meeting place  
schedules. Please check the [SDAG website](http://www.sandiegogeologists.org) for updates.

### CALL FOR JOB POSTINGS

*Please Submit Job Postings to:*  
[secretary@sandiegogeologists.org](mailto:secretary@sandiegogeologists.org)

*For Updated Job Postings, please Visit:*  
<http://www.sandiegogeologists.org/Jobs.html>





## SAN DIEGO ASSOCIATION OF GEOLOGISTS

[www.sandiegogeologists.org](http://www.sandiegogeologists.org)

### *JOB ANNOUNCEMENT*

#### **Helenschmidt Geotechnical, Inc.**

is seeking a **Certified Engineering Geologist (Full-Time position)** for its office in Carlsbad, California. The candidate should have at least 10 years geotechnical experience and the following qualifications:

- Bachelor's degree in Engineering Geology, Geology or Geological Engineering (Master's degree preferred).
- California Certified Engineering Geologist
- Excellent technical writing skills. Adept at use of Microsoft Word and Excel.
- Experience in: site characterization; logging of exploratory trenches, small and large diameter boreholes (including downhole logging); geologic mapping and development of geologic cross-sections; aerial photograph interpretation; and fault studies. Technical experience in the Southern California area is preferred.
- Experience in preparing graphic exhibits and delivering presentations (PowerPoint) to clients, community groups or agencies.
- Project management skills including budgeting, proposal preparation, staff supervision and client relations.
- Valid California Driver's License and vehicle.

Candidate should expect to perform a combination of field investigation, construction observation, business development, proposal preparation and technical report preparation.

**Competitive salary and benefits package. EOE.**

**E-mail your resume in confidence to [engineering.hgi@att.net](mailto:engineering.hgi@att.net)**

### *CALL FOR ARTICLES*

SDAG invites members to submit articles on their current research or an interesting project they are working on for publication in the monthly newsletter. The article should be no more than 1 page in length. Photos are welcomed; too. Please submit articles to the SDAG secretary via email.



## SAN DIEGO ASSOCIATION OF GEOLOGISTS

*[www.sandiegogeologists.org](http://www.sandiegogeologists.org)*

### *SDAG RESEARCH TOOL*

A comprehensive listing of all papers published by SDAG, whether as annual field trip guidebooks or special publications, is now available on our website. Entries are sorted by primary author, or chronologically by date of publication, starting with our first guidebook in 1972, from Coast to Cactus in 2014, and finally on the Julian 'Road to Gold' in 2017. These can be accessed or downloaded as .pdf files. They are fully searchable in Adobe Reader or Acrobat, so if you are researching a topic, "oikocryst" for example, you can search for that keyword. This listing will be updated as new books are published. Thanks to Greg Cranham and Hargis + Associates, Inc., for making this possible. See the links below:

[http://www.sandiegogeologists.org/SDAG\\_Pubs\\_authors.pdf](http://www.sandiegogeologists.org/SDAG_Pubs_authors.pdf)

[http://www.sandiegogeologists.org/SDAG\\_Pubs\\_chronological.pdf](http://www.sandiegogeologists.org/SDAG_Pubs_chronological.pdf)

### *PRESIDENT'S CORNER*

Hello SDAG Members!

Many thanks to all of the kind folks that attended last month's meeting. Your patience during the technical difficulties we experienced during the talk is very much appreciated by us, and by Barry. Speaking of Barry, thanks again for lending your time and effort. We'd love to have you back! Similar to last month, we recorded the meeting and the link to the video is provided in this newsletter. We will also post the link to our website.

As always, a brief reminder to fill out and send in your 2021 memberships and, if you have the reserves, 2021 sponsorships. Don't forget to save the date for this year's field trip! October 23-24.

For this month's meeting we are going to do things a little different. EERI hosted a webinar on the 6<sup>th</sup> concerning the upcoming revisions to the Alquist-Priolo Earthquake Fault Zones for the City and County of San Diego and has given us permissions to rebroadcast the webinar in lieu of a speaker. This will be to the benefit of the many of us that were unavailable 12pm-2pm on a Tuesday.

So! Join us April 21<sup>st</sup> for the next SDAG meeting. Looking forward to seeing you all!

Cheers,

Luke Weidman



## SAN DIEGO ASSOCIATION OF GEOLOGISTS

*[www.sandiegogeologists.org](http://www.sandiegogeologists.org)*

### 2021 EXECUTIVE COMMITTEE

**PRESIDENT:**

Luke Weidman  
[lcweidman@gmail.com](mailto:lcweidman@gmail.com)

**VICE-PRESIDENT:**

Keith Kastama  
[keithkastama@gmail.com](mailto:keithkastama@gmail.com)

**SECRETARY:**

Mariana Aguilar  
[secretary@sandiegogeologists.org](mailto:secretary@sandiegogeologists.org)  
[petishu@gmail.com](mailto:petishu@gmail.com)

**TREASURER:**

Athena Catanzaro  
[athenacatanzaro@gmail.com](mailto:athenacatanzaro@gmail.com)

### CALL FOR GEO PHOTOS

*Any recent field trips or exciting outings?*

**SHOW OFF YOUR PICTURES!**

*Please Submit to:* [petishu@gmail.com](mailto:petishu@gmail.com)

### PHOTO SUBMISSIONS

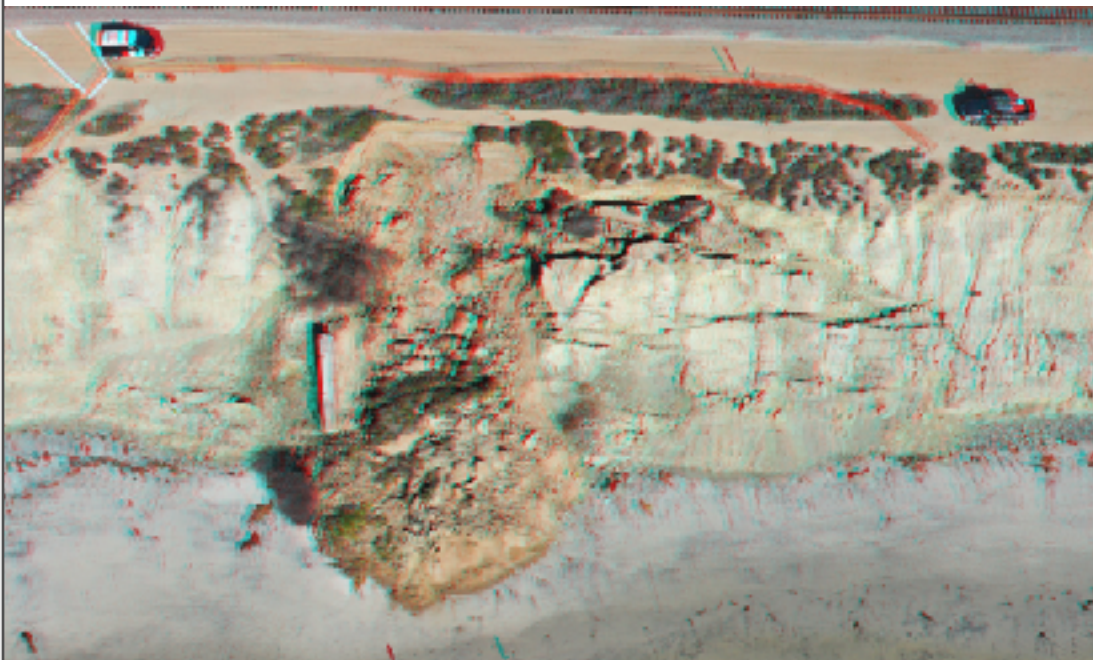
**BIG THANKS** to all who shared the photos below!

### MIKE HART

**GET OUT YOUR  
3D GLASSES!!!**

AN ANAGLYPH DRONE PHOTO BY  
DAVE EVANS OF GEOCON, INC.  
OF THIS MONTH'S (MARCH)  
RECENT LANDSLIDE ON THE  
BLUFFS SOUTH OF 4TH STREET  
IN DEL MAR.

THE SLIDE WAS AN UNUSUAL  
COMPOUND (PRIMARILY  
TRANSLATIONAL) FAILURE THAT  
PRESUMABLY OCCURRED ALONG  
A BEDDING PLANE IN FISSURED  
CLAYSTONE OF THE DEL  
MAR FORMATION.







## SAN DIEGO ASSOCIATION OF GEOLOGISTS

[www.sandiegogeologists.org](http://www.sandiegogeologists.org)

### *TOM AND DORIAN COOPER*

MONTANA  
SUMMER 2020

"PHOTOS FROM OUR FIELD  
TRIP CRUISES AROUND  
WESTERN MONTANA DURING  
LAST SUMMER. THESE ARE  
OUR "ONE STOP WONDERS".  
FOR SDAG NEWSLETTER!

HAPPY TRAILS IS ALONG THE  
ROCKY MOUNTAIN FRONT,  
BEDDED LIMESTONES  
OUTSIDE OF CHOTEAU, MT.

DORIAN IN FRONT OF  
MEMORIAL FALLS, NORTHEAST  
OF WHITE SULPHUR SPRINGS,  
ABOUT 2 HOURS NE OF  
HELENA.

PICTURE OF TOM IS ALONG THE  
GALLATIN RIVER, SOUTHWEST  
OF BOZEMAN, MT. GREAT  
FISHING!





## SAN DIEGO ASSOCIATION OF GEOLOGISTS

[www.sandiegogeologists.org](http://www.sandiegogeologists.org)

### Request for 2021 SDAG/SDGS Publication Sponsors

On behalf of the San Diego Geological Society, Inc. (SDGS), a public benefit 501(c)3 nonprofit educational corporation, we would like to request tax deductible Donations for our San Diego Association of Geologists (SDAG) group.

Your donation will further the SDGS mission to promote geology and related fields in the greater San Diego region, operating through the San Diego Association of Geologists (SDAG), a committee of SDGS. To achieve our primary educational objective, we organize frequent field trips and maintain a program of monthly meetings featuring speakers on current geological topics.

*REQUESTS  
FOR  
2021  
SPONSORS*

**\$100.00 Donation - EMERALD SPONSOR**

**\$500 Donation - RUBY SPONSOR**

**\$1,000.00 Donation - DIAMOND SPONSOR**

All sponsors will be listed on the [SDAG web site](http://www.sandiegogeologists.org) and in the monthly SDAG meeting newsletters. In addition, "DIAMOND SPONSORS will be presented with a thank you plaque.

Sponsors as well as information on how to become a Sponsor are located on the SDAG web site at:

<http://www.sandiegogeologists.org/Sponsors.html>.

Should you have any questions regarding a Sponsorship, please contact our non-profit **SDGS Secretary (Diane Murbach) at 619-865-4333**.



## SAN DIEGO ASSOCIATION OF GEOLOGISTS

[www.sandiegogeologists.org](http://www.sandiegogeologists.org)

# THANK YOU SPONSORS !!!



*Diamond*



Kuper Consulting, LLC



*Ruby*



Leighton



*Dave  
Bloom*



*Emerald*

- [Dr. Pat Abbott](#) - SDSU Prof. of Geology, Emeritus
- Marty and Sherry Bloom
- [Dr. Vic Camp](#)
- Joe Corones
- Greg Cranham - Consulting Geologist
- Dr. Margaret R. Eggers, CHG - [Eggers Environmental, Inc.](#)
- Karen Evans for Jim Evans (deceased)
- Phil Farquharson - [Geology Guy](#)
- Geotechnical Exploration, Inc.
- Carolyn Glockhoff - [Caro-Lion Enterprises](#)
- Cari Gomes - [Pinao Consulting](#)
- [Woody Higdon, Geotech Imagery Intl.](#)

- Frank Kingery Tom Lamb
- Lowell E. Lindsay and Diana Lindsay - [Sunbelt Publications](#)
- Dr. Monte Marshall - SDSU Prof. of Geology and Geophysics, Emeritus
- Doug & Betty Moran
- Jennifer Morton - [Terramar Environmental](#)
- Monte and Diane Murbach - [Murbach Geotech](#)
- [Pacific Drilling Co.](#) - Tod Clark
- [Peet's Coffee & Tea Solana Beach](#)
- [Pure Wine, Inc.](#)
- Gerald Shiller
- [Scott Snyder](#)
- Starbucks - Devore/San Bernardino
- David and Jan Steller
- Dr. Anne Sturz
- Randy Wagner
- Mary Walke
- Carole L. Ziegler