

SAN DIEGO ASSOCIATION OF GEOLOGISTS

<http://www.sandiegogeologists.org>

SDAG MEETING ANNOUNCEMENT

Thursday, January 16, 2020

Geology of Mission Trails Regional Park

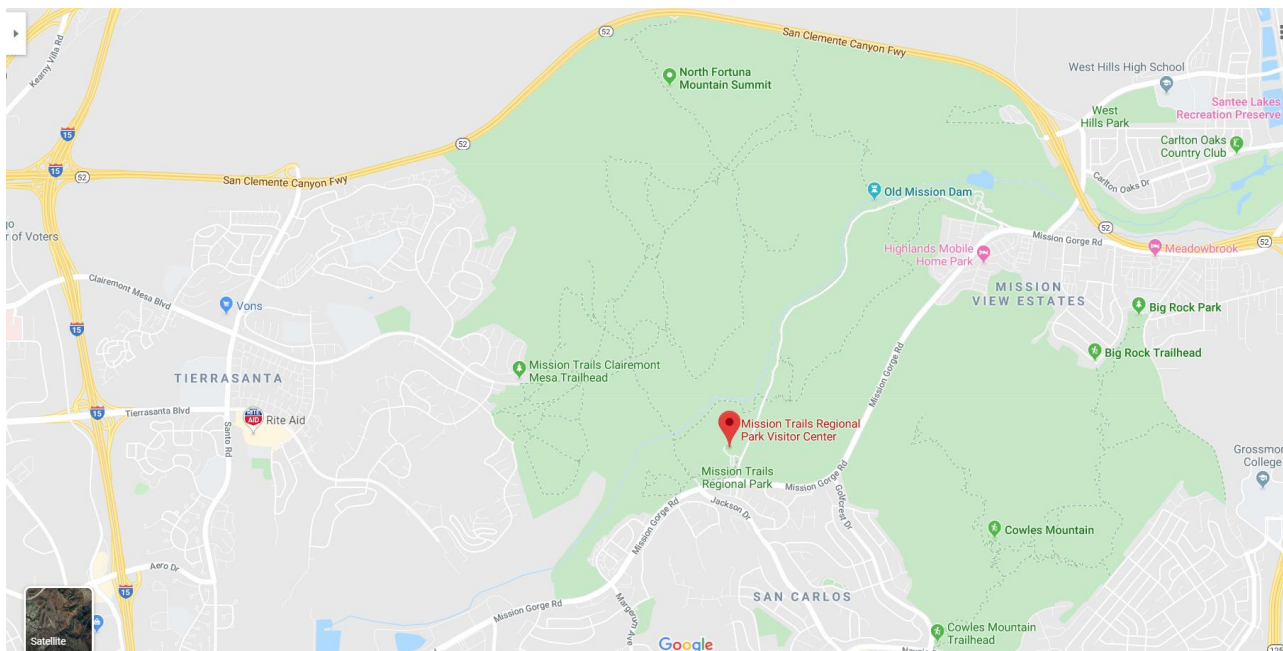
Presented by: Pat Abbott PhD

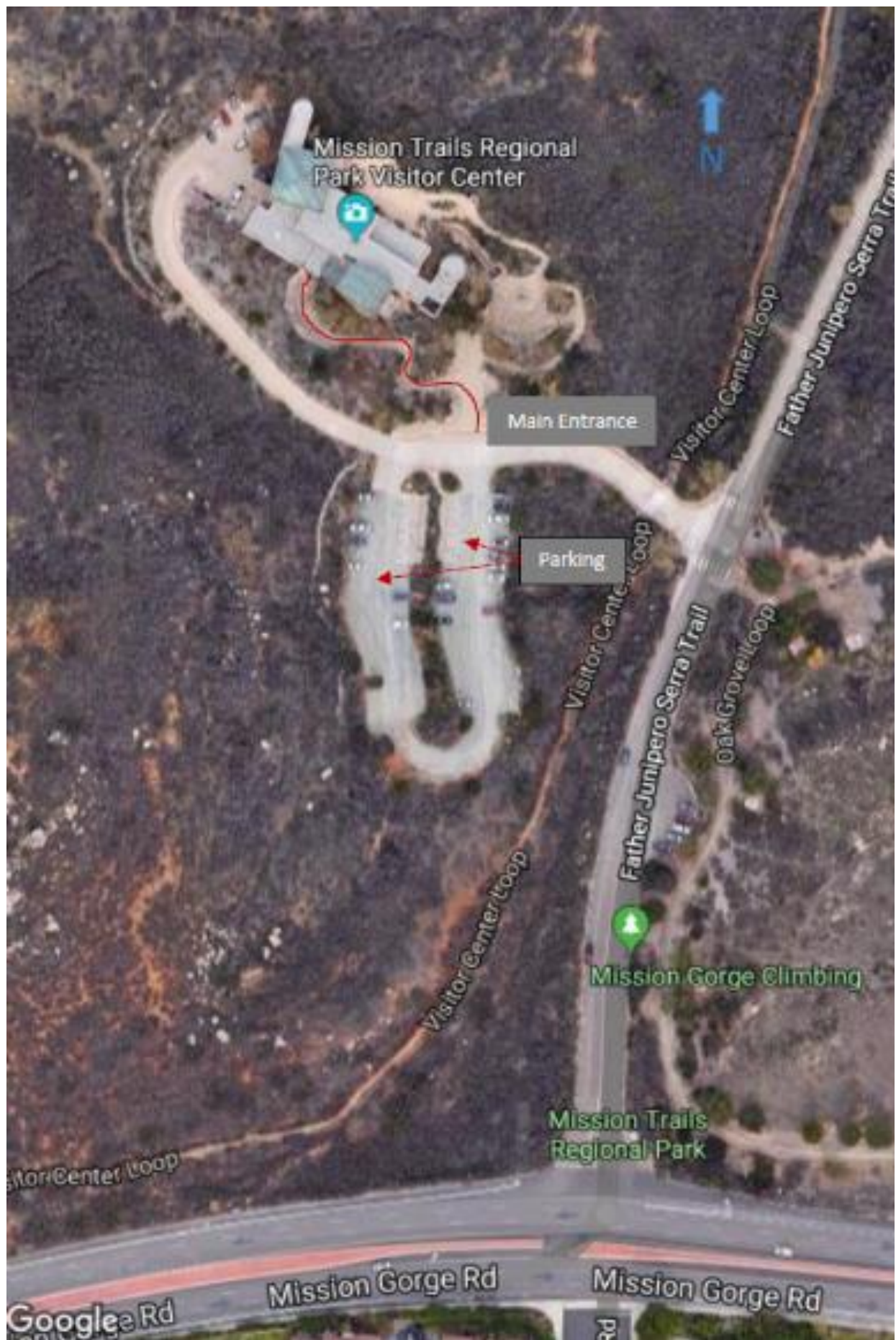
- Where:** **Mission Trails Regional Park Visitor Center**
One Father Junipero Serra Trail
San Diego, CA 92119 (See Map)
- When:** 5:30 pm – Social Hour (Walawander Fund Donation Tavern)
6:30 pm – Dinner
7:30 pm – Presentation
- Dinner:** Taco Express Catering, Mexican Food
- Cost:** \$30 Member, \$35 Non-Member, \$15 Students.
- Reservations:** Make your reservation **online** at <http://www.sandiegogeologists.org/Meetings.html>
no later than noon, Monday January 13, 2020. Reservations cannot be
guaranteed after Friday at noon but are always preferred over walk-ins. **EARLY**
reservations well before the deadline are MUCH appreciated.

Directions:

FROM INTERSTATE 15: Take the Friars Rd towards Qualcomm Stadium exit (Exit 7). Use the left two lanes to turn left onto Friars Rd. Stay on Friars Rd. for approximately 4.3 miles (the road will turn into Mission Gorge Rd. after 1.1 miles) and turn left onto Father Junipero Serra Trail. Turn left after 0.1 miles, parking should be on your left and the visitors center on your right.

FROM STATE ROUTE 52: Take Mast Blvd. exit (Exit 13). Turn left onto Mast Blvd. and then make a right onto W Hills Pkwy. After 0.7 miles use the right two lanes to turn right onto Mission Gorge Rd. After 2.4 miles turn right onto Father Junipero Serra Trail. Turn left after 0.1 miles, parking should be on your left and the visitors center on your right.





ABSTRACT

After publication of the book on the geology of Mission Trails Park the MTRP Foundation decided they would like a video on the topic. They hired an Emmy award-winning director to work under an Executive Producer to create a video about 19 minutes long. The premiere of this video will take place at the SDAG meeting on Thursday, January 16. SDAG is a co-sponsor of the video.

The meeting program will also insights into the making of the new video; the showing of another MTRP video of 4 minute length also involving Pat Abbott; and some discussion of other Mission Trails geology topics.

If you have not been to the Mission Trails Visitor Center before please come early enough to enjoy its award-winning architecture, displays, and great views. Dr. Patt Abbott's book "Geology-Mission Trails Park" will be on sale at the visitors center for \$16 and he will be available during the reception to sign books.

BIO

Pat Abbott is a native San Diegan who earned a B.S. degree in geology from San Diego State College, and M.A. and Ph.D. degrees in geology from the University of Texas at Austin. He was hired as a Carbonate Petrologist by SDSU where he taught for multi-decades. He is author of books including the college textbook Natural Disasters now in its 11th edition published by McGraw-Hill; the Rise and Fall of San Diego (1999) published by Sunbelt; and Geology of Mission Trails Park (2017) published by the MTRP Foundation.

UPCOMING MEETINGS

Meetings are usually held on the 3rd Wednesday of the month may change to accommodate the speaker and meeting place schedules. Check the SDAG website for updates

February 2020 Marina Village	Geotechnical Aspects of Infiltration By: Jeremy Faker
March 2020 TBD	Anza Borrego Natural History By: Mike Wells
April 2020 TBD (GRA joint meeting)	Cannabis, Water and Environmental Crimes in Southern California By: Eric Lindberg, PG, CHG

2019 SDAG EXECUTIVE COMMITTEE

<u>PRESIDENT:</u>	Adam Avakian; armenianmenace1@gmail.com
<u>VICE PRESIDENT:</u>	Luke Weidman; lcweidman@gmail.com
<u>SECRETARY:</u>	Nadja Scholl; secretary@sandiegogeologists.org
<u>TREASURER:</u>	Keith Kastama
<u>PUBLICATIONS:</u>	Lowell Lindsay; <i>Sunbelt Publications</i> ; Ph: (619) 258-4911, x111; llindsay@sunbeltpub.com

One Stop Wonder

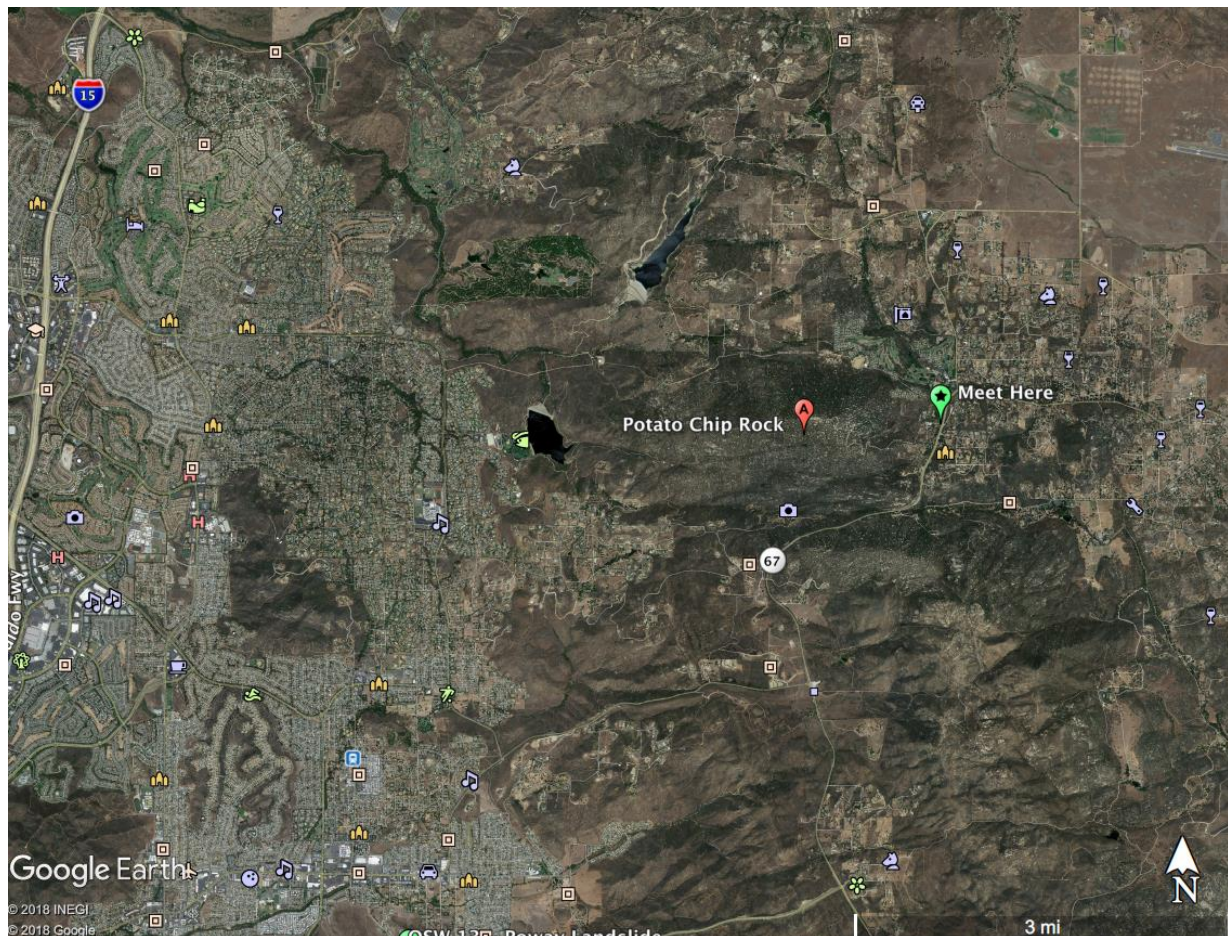
Please join us for our next One Stop Wonder to Potato Chip Rock on January 11 at 9:00 a.m. We will start from Highway 67 in Ramona and will walk up the paved Mt. Woodson Road. This will be a moderately strenuous and relatively steep hike; bring plenty of water.

From North County: Take I-15 to Camino Del Norte and head east. Turn right on Espola Road, left on Poway Road, and left on Highway 67.

From the coast: Take I-5 to Highway 56 and head east. Turn right on Twin Peaks Road, right on Espola Road, left on Poway Road, and left on Highway 67.

From South County: Take Highway 52 or I-8 to Highway 67 and head north.

There will be parking on the side of the road, but it can be busy on the weekend. Carpooling is recommended.



SDAG PRESIDENT'S CORNER

So, since this newsletter is coming after the December meeting, you might have missed the annual Natural History Museum meeting but perhaps not since we had a great turnout! Thank you to Tom Demere for presenting yet another great talk this time about the "Paleontology of a Middle Eocene Bone Bed" in Oceanside, CA. So many specimens out of one location!

A congratulations to our student scholarship recipients, Faith Burkett (SDSU), Eric Surratt (SDSU), Sean Curran (UCSD), Canyon Breyer (UCSD). Looking forward to hearing about your research!

As this is my last President's corner before moving on to the great unknown, actually they just refer to it as the 'Past President's' Club, I'll reflect on my time at SDAG.

Didn't think 4 years could move by so fast but it did and it was great getting to know everyone involved with SDAG from officers to members and learn so much about local and not so local geology. I hope everyone enjoyed the talks I brought to you this year as well as my 2018 field trip to Rainbow Basin. It's been a great ride.

Our incoming President, Adam Avakian, has some great talks lined up for us next year starting with the "Geology of Mission Trails" at the Mission Trails Visitor Center on January 16th (3rd Thursday) presented by Pat Abbott.

I would like to welcome Keith Kastama who won a tight one horse race for the treasurer position. He has been coming to SDAG meetings for a few years as a student and now as a locally employed geologist.

Thanks to Adam, Nadja (also for filling in midway through the year) and Luke for their help with all the meetings this year. Without a good group of officers, SDAG wouldn't be what it is so I greatly appreciate all their hard work.

That's about it. See you out there!

Ken Haase

2019 SDAG President

Geocon, Inc.

Support SDAG/SDGS using AmazonSmile



What is AmazonSmile?

AmazonSmile is an automatic way for you to support the **“San Diego Geological Society”** (SDGS) SDAG’s 501(c)(3) as your favorite public charitable organization every time you shop on Amazon at no cost to you at smile.amazon.com.

How do I select a charitable organization to support when shopping on AmazonSmile?

On your first visit to AmazonSmile smile.amazon.com, you need to select a charitable organization to receive donations from eligible purchases before you begin shopping. Please select the **San Diego Geological Society**. Amazon will remember your selection, and then every eligible purchase you make at smile.amazon.com will result in a donation to SDGS (SDAG).

How much of my purchase does Amazon donate?

The AmazonSmile Foundation will donate 0.5% of the purchase price from your eligible AmazonSmile purchases.

How can I learn more about AmazonSmile?

Please see complete AmazonSmile [program details](#).

National Earthquake Conference

The 2020 National Earthquake Conference (NEC) <http://www.earthquakeconference.org/> will take place during the week of March 2, 2020 in San Diego and will bring together academia, building code experts, design/build professionals, FEMA directorates, first responders, geologists, local emergency managers, insurance and reinsurance professionals, local and tribal governments, private-sector interests, public information officers, state government leaders, social science practitioners, U.S. State and Territorial Earthquake Managers, USGS leadership, and volunteers. Attendees will share the latest advances in earthquake science, engineering, policy, and practice to create more resilient buildings and disaster-resilient communities in the face of seismic risk. The results of a new earthquake scenario and risk study for the San Diego region will be a key highlight of the conference. Developed by experts over the last five years, the scenario will showcase the impacts and consequences of a potential M6.9 earthquake on the Rose Canyon fault that runs through the San Diego harbor, resulting in significant disruption and loss to local communities. Participating experts will share findings from seismological and geologic simulations, engineering inventory and assessment studies, and local stakeholder focus groups.

EERI Earthquake Preparedness Meeting

Dear members and friends of the EERI San Diego Chapter,

Approximately every 20 years, Southern California is hit by a moderate to large earthquake that causes loss of life and billions of dollars in damage. After a large earthquake, cities are faced with the challenge of rebuilding, restoring economical losses, and recovering from psychological impacts among the affected population. Old existing buildings and systems pose the largest threat to life and the economy. Cities in Southern California are working nonstop in this race for earthquake resilience before the next big one occurs.

Speakers from Southern California cities will present on various topics of earthquake preparedness, including local jurisdictions and policies. More information: <https://sandiego.eeri.org/?p=2239>

The event will take place in the Faculty-Staff Club, San Diego State University on Wednesday, January 15, 2020, 6:00-8:00pm. To register please click here: <https://eeri.org/cohost/registration/san-diego-dinner-2019>

Looking forward to seeing all of you,

Jorge

President, EERI San Diego Chapter

SDAG Research Tool

SDAG RESEARCH TOOL - A comprehensive listing of all papers published by SDAG, whether as annual field trip guidebooks or special publications, is now available on our website. Entries are sorted by primary author, or chronologically by date of publication, starting with our first guidebook in 1972, from Coast to Cactus in 2014, and finally on the Julian 'Road to Gold' in 2017. These can be accessed or downloaded as .pdf files. They are fully searchable in Adobe Reader or Acrobat, so if you are researching a topic, "oikocryst" for example, you can search for that keyword. This listing will be updated as new books are published. Thanks to Greg Peterson and Hargis + Associates, Inc., for making this possible. See the links below:

http://www.sandiegogeologists.org/SDAG_Pubs_authors.pdf

http://www.sandiegogeologists.org/SDAG_Pubs_chronological.pdf

Interactive Fault Map for San Diego - Tijuana

As part of the update for the San Diego-Tijuana Earthquake Planning Scenario, Working Group No. 1's "Fault Map Subcommittee" completed the first publicly available bi-national active and potentially active fault map (http://sandiego.eeri.org/?page_id=265). This interactive GIS map includes the first publicly available active and potentially fault map locations from the City of San Diego. The map also integrated the faults south of the border for a bi-national cross border view. This map is an on-going project as our knowledge increases about local active and potentially active faults.

You can expand the map legend on the left side to select layers that can be turned on or off for the map view. You can also select from 1 of 12 base maps at the base map icon. You can click on the fault line in your map layer view to see the meta-data source. In addition, the City of San Diego Seismic Safety Study Geologic Hazards & Faults Maps are available in the layer titled "GeoHaz SD City." Please note that the City "Zone 12 Potentially Active" fault layers was not included in this data, therefore you will need to use the City Maps to find Zone 12.

The Fault Map link is available at: http://www.sandiegogeologists.org/Faults_map.html

Please contact Diane Murbach (dianemurbach@gmail.com 619-865-4333), Chair for the SDTJ Earthquake Scenario Working Group #1 - Earth Science, if you have any questions, or see any errors on this new fault map.

I would like to thank Carolyn Glockhoff for her endless GIS work, Jim Quinn and the City for providing their data and time, Jerry Treiman with CGS for his time preparing the Surface Rupture and providing their new State fault data layer, and Luis Mendoza at CICESE for providing the faults south of the border. Please contact Diane Murbach (dianemurbach@gmail.com), Chair for the SD-TJ Earthquake Scenario Working Group #1 - Earth Science, if you have any questions, or see any errors on this new fault map.

Diane Murbach (619) 865-4333

Engineering Geologist, C.E.G.

www.murbachgeotech.com

Request for 2020 SDAG/SDGS Publication Sponsors

On behalf of the San Diego Geological Society, Inc. (SDGS), a public benefit 501(c)3 nonprofit educational corporation, we would like to request tax deductible Donations for our San Diego Association of Geologists (SDAG) group. The list of paid Sponsors and the forms to become a Sponsor are located on the SDAG web site at: <http://www.sandiegogeologists.org/Sponsors.html>.

Your donation will further the SDGS mission to promote geology and related fields in the greater San Diego region, operating through the San Diego Association of Geologists (SDAG), a committee of SDGS. To achieve our primary educational objective, we organize frequent field trips and maintain a program of monthly meetings featuring speakers on current geological topics. We also publish field trip guidebooks and other publications related to geology and natural history. We encourage scholarship and research by awarding scholarships from the elementary through graduate levels. With your \$100 "EMERALD" donation, your name/business will be listed as a sponsor on the SDAG web site (<http://www.sandiegogeologists.org/>) and in the monthly SDAG meeting newsletters. With your \$500 "RUBY" or \$1,000 or more "DIAMOND" level donation, your business card will also be included on the SDAG web site and in the monthly SDAG meeting newsletters. In addition, as a "\$1,000 or more DIAMOND" level donation you will be presented with a thank you plaque.

Should you have any questions regarding a Sponsorship, please contact our non-profit SDGS Secretary (Diane Murbach) at 619-865-4333.

Call for Articles

SDAG invites members to submit articles on their current research or an interesting project they are working on for publication in the monthly newsletter. The article should be no more than 1 page in length. Photos are welcomed; too. Please submit articles to the SDAG secretary via email.

Geo Job Listings

Project Geologist Wanted

R. T. Frankian & Associates, Inc.

R. T. Frankian & Associates, Inc., a geotechnical engineering and engineering geology consulting firm since 1963, seeks a qualified individual for Project Geologist position. This position is to work on medium to large size land development-type projects, as well as to develop work within the public sector. The successful candidate must meet the following criteria.

The Project Geologist must -

- Possess BS/BA in Geology, with classes in geologic field mapping, stratigraphy/sedimentology, and structural geology
- Have 1-3 years experience in hillside grading in L. A. County or Southern California
- Be able to perform downhole boring logging, test pit logging, field supervision, slope stability analysis
- Be able to assist CEG with various aspects of land planning and development projects, **especially** field-related aspects
- Be willing to work in various aspects of the job (field, office, and as needed inspection)
- Possess excellent written and verbal communication skills, as well as excellent interpersonal skills
- Being a PG in the State of California is preferred but not required

Senior Engineering Geologist Wanted

R. T. Frankian & Associates, Inc.

R. T. Frankian & Associates, Inc., a geotechnical engineering and engineering geology consulting firm since 1963, seeks a qualified individual for the Senior Engineering Geologist position. This position is to work on medium to large size land development-type projects, as well as to develop work within the public sector. The successful candidate must meet the following criteria.

The Senior Engineering Geologist must -

- Possess BS/BA in Geology, with classes in geologic field mapping, stratigraphy/sedimentology, and structural geology
- Have 3-5 years experience in hillside grading in L. A. County or Southern California
- Be able to perform downhole boring logging, test pit logging, field supervision, slope stability analysis
- Possess excellent written and verbal communication skills, as well as excellent interpersonal skills
- Be willing to work in various aspects of the job (field, office, and as needed inspection)
- Be a CEG in the State of California

R. T. Frankian & Associates, Inc., offers a competitive salary, commensurate with experience and abilities, and a benefits package.

Email resumes to resumes@rtfrankian.com.

GEI Consultants, Inc. is a leading consulting engineering and environmental firm ranked #92 in the ENR top 500 (2018), with over 800 employees in multiple offices throughout the U.S. and Canada. We serve hundreds of government, energy, industry and institutional clients, and have completed 50,000 project engagements throughout the United States, Canada, and more than 20 other countries. Our technical experts are involved in dozens of specialty services emanating from our core solutions in water, energy, buildings, infrastructure and industrial.

We are seeking a full-time **Senior Engineering Geologist** for our Carlsbad, CA office. Experience in geologic investigations for dams and other water infrastructure projects is a plus.

Essential Responsibilities & Duties

- Manage the technical, financial, and client relationship aspects of a variety of geologic/geotechnical engineering projects throughout the country, with a geographic emphasis in California.
- Prepare technical scopes of work and budgets for proposals, and prepare requests for proposals for subcontractor services.
- Plan and lead the implementation of geologic/geotechnical site assessments and subsurface investigations, which include: field mapping, aerial photograph interpretation, rock and soil borings, surface and downhole geophysics, LiDAR analysis, preparation of technical reports, and providing technical oversight of subcontractors including review/approval of invoices and work proposals.
- Participate actively in professional organizations and conferences; deliver presentations, and write technical papers.
- Generate new business.
- Prepare and deliver technical presentations to clients and regulators.
- This position has a field component; travel, and some overnight travel are required.

Minimum Qualifications

- B.S. in Geology; M.S. is a plus.
- P.G. and C.E.G. with registration in California.
- 10+ years of previous professional experience in engineering geology.
- Excellent technical report writing and communication skills.
- Willingness and ability to travel on short-term assignments as needed.
- Valid U.S. driver's license.

GEI is an EEO/AA/M/F/Vet/Disability employer

Apply here: <https://jobs.ourcareerpages.com/job/396913>

For other opportunities within GEI, go to: <https://geiconsultantsinc.ourcareerpages.com/>



Geotechnical Exploration, Inc.

SOIL AND FOUNDATION ENGINEERING • GROUNDWATER • ENGINEERING GEOLOGY

PROJECT GEOLOGIST

Geotechnical Exploration, Inc., a geotechnical engineering company founded in 1976, is seeking a qualified individual for a Project Geologist position available immediately. Position duties, criteria & requirements are as follows:

- Manage and/or perform all phases of a wide variety of development/construction projects
- Supervise the work of staff geologists and technicians
- Prepare geologic/geotechnical reports and review reports prepared by staff geologist and engineers
- Prepare and review boring and trench logs
- Perform and supervise field exploration programs, background reviews, and geological mapping
- Prepare and present proposals, scopes of work and budgets for new projects
- Interface with the client and team to proactively troubleshoot and problem-solve using practical, client-focused solutions
- Manage projects, budgets, scope, change orders and collections (from start to finish)

A strong command of regional soils and rock identification and properties, geologic hazards identification, and all applicable forms of construction observation/testing is mandatory. In addition, the qualified individual should

- Be technically competent in routine geotechnical matters and have a complete understanding of geologic factors which affect engineering design
- Have excellent communication skills (written and verbal)
- Have strong computer skills – Word, Excel, and Google Earth
- Be able to organize priorities and multi-task effectively in a team environment and play well with others
- Have a BA/BSc in Geology plus a minimum of 5 years project-level experience

Must have Professional Geologist Registration for State of California

Certified Engineering Geologist for State of California is preferred but not required

Salary commensurate with experience. Please email resumes to info@gei-sd.com



SnapNHD is looking to hire an experienced geologist to review our natural hazard disclosure report and act as an ongoing advisor to the company. If you are interested in learning more, please contact will@snapnhd.com. A sample report can be found here: [Sample Report](#)

MP Materials, Mountain Pass, CA

Seeking Industrial Hygienist/Radiation Safety Officer

Please contact:

Chris Baker

Senior Environmental Specialist

m: 562.331.4507

[cbaker](mailto:cbaker@mpmaterials.com)@mpmaterials.com | www.mpmaterials.com

PHOTOS OF THE MONTH

If you would like to submit a photo, email them to secretary@sandiegogeologists.org and I will try and put them in the newsletter. Provide a short description of the picture.



Congratulations to our student scholarship recipients, Faith Burkett (SDSU), Eric Surratt (SDSU), Sean Curran (UCSD), Canyon Breyer (UCSD).





Hargis + Associates, Inc. is an environmental consulting firm specializing in hydrogeology and engineering. We are headquartered in San Diego, California and have offices in Mesa and Tucson, Arizona. Our practice areas include all aspects of hydrogeology and engineering.

As a client service organization, we pride ourselves in being attentive and efficient in meeting our client's needs and solving their problems. In addition to our technical expertise, communication and responsive coordination are hallmarks of our reputation.

We invite you to explore our website to learn more about our firm and the services we provide. We welcome the opportunity to discuss our consulting expertise directly with you.

*Contact: **Dr. David R. Hargis***



H&P Mobile Geochemistry is an industry-leading provider of environmental lab services. With ten mobile labs and five direct push sampling trucks and unparalleled experience, H&P's repertoire of environmental lab services includes many forms of environmental lab sampling techniques all the way to on site field analysis services. H&P has successfully and accurately performed environmental lab services delivering quality results to our clients for over 16 years.

2470 Impala Dr., Carlsbad, CA 92010

(800) 834-9888

Contact: Louise Adams or Suzie Nawikas



*Contact: **Rupert Adams, CEG***

Geocon Incorporated

6960 Flanders Drive, San Diego, CA 92121

P | 858.558.6900

San Diego / Riverside County / Palm Desert / Los Angeles /

Orange County / Bakersfield / Bay Area / Fairfield / Sacramento



Leighton is a multidiscipline engineering firm, providing geotechnical, environmental, and testing and inspection services. Founded in 1961, Leighton provides engineering solutions to public agencies, property owners, and facilities. With offices located in San Diego, Irvine, Los Angeles, Temecula, Rancho Cucamonga, Palm Desert, Santa Clarita, Ventura, and Bakersfield, we efficiently service any region of Southern California. Our professional staff of Registered Geotechnical Engineers, Professional Geologists and Certified Engineering Geologists, Registered Hydrogeologists, and Registered Environmental Assessors and Certified Inspectors provide decades of local experience for the successful completion of your projects.

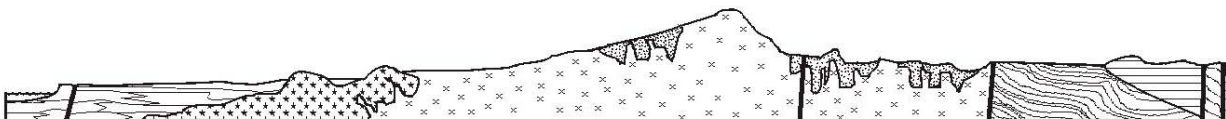
For additional information, please contact Bob Stroh (rstroh@leightongroup.com)

Website link: <http://www.leightongroup.com>

- [Dr. Pat Abbott](#) — SDSU Professor of Geology, Emeritus
- Marty and Sherry Bloom
- Joe Corones
- Greg Cranham — Consulting Geologist
- Dr. Margaret R. Eggers, CHG — [Eggers Environmental, Inc.](#)
- Karen Evans for Jim Evans (Deceased)
- Phil Farquharson — [Geology Guy](#)
- Carolyn Glockhoff — [Caro-Lion Enterprises](#)
- Rob Hawk
- Tom Lamb
- [Leighton Group](#)
- Lowell A. Lindsay & Diana Lindsay — [Sunbelt Publications/AESE](#)
- Cari & Dan Gomes — [Pinao Consulting](#), CAVU Brewing
- Dr. Monte Marshall—SDSU Prof. of Geology & Geophysics, Emeritus
- Jennifer Morton — [Terramar Environmental](#)
- Monte and Diane Murbach — [Murbach Geotech](#)
- Peet's Coffee and Tea Solana Beach
- Pure Wine, Inc. - www.drinkpurewine.com
- Gerald Shiller
- [Scott Snyder](#)
- David and Jan Steller
- Dr. Anne Sturz

- Carole L. Ziegler
- Vic Camp
- Doug & Betty Moran

Add yourself to this list - Sponsors, Corporate Sponsors, and Patrons provide a significant portion of SDGS's and SDAG's operating and scholarship budgets. SDGS is a 501(c)3 public benefit nonprofit educational corporation. For more information, please see our Sponsorship Form <http://www.sandiegogeologists.org/SponsorForm.pdf>.



SAN DIEGO ASSOCIATION OF GEOLOGISTS

www.sandiegogeologists.org

2020 MEMBERSHIP FORM

NAME: _____ DATE: _____

Please type or print clearly.

Home Address: _____

Work Address: _____

Please include company, university or other affiliation

E-mail Address: _____

NOTE: Your membership dues include delivery of the monthly SDAG newsletter and announcements to this email address.

Phone: Home: _____ Work: _____ Cell: _____

Website: _____

Are you willing to serve as an **officer**? _____ Are you willing to volunteer as a **guest speaker**? _____

Field(s) of Interest: _____

Dues: _____ Student Member (email delivery only) \$ 5.00

(check choice) _____ Regular Member (email delivery only) \$ 25.00

_____ Donation Student Scholarships \$ _____

☐ New/Returning Member ☐ Continuing Member

Please enclose a check payable to SDAG, and mail to:

San Diego Association of Geologists (SDAG)

3130 N Evergreen Street

San Diego, CA 92110