

SAN DIEGO ASSOCIATION OF GEOLOGISTS

SDAG FIELD TRIP

October 14th and 15th 2017 (Saturday and Sunday)

Julian-Banner Historical District—Road to Gold

Hosted by: **Chris Livesey (SDAG)**

Where: **Julian, California**

When: Saturday October 14, 2017 through Sunday October 15, 2017

This trip will take you along State Route 78 in Ramona and State Route 79 through Julian. In an effort to break up the monotony of a typical roadside geology field trip, this year, two short hikes will be incorporated to invigorate you. Prior to crawling underground in the Eagle Mine and visiting the Ranchito mine, we will explore the local geology of the area, including the Ramona plutonic complex, ballena gravels precariously outcropped atop a mountain top, surficial deposits will be re-examined (optional stop time pending), and gold claim/prospecting locations. Please note the itinerary is preliminary and is subject to change.

Thank you everyone for their sign-ups. We'll see you out there!

-Chris Livesey (SDAG Vice President)

ANNOUNCEMENTS

SDAG Fall 2017 Fieldtrip—October 14th and 15th 2017.

Field Trip itinerary

October 14, 2017

0700 – 0800: Registration check-in, continental breakfast (provided), coffee, water, orange juice, receive your memorable gift

0800 – 1100: Hike to the ballena gravels with discussion by Pat Abbott
Round trip ~2.4 miles, Gross Elevation Gain ~600 feet

1100 – 1200: Miscellaneous stops pending time, gold claims, Pseudo Tsunami Deposits re-examined (speaker TBD and time permitting)

1200 – 1300sh: Lunch (provided) at Santa Ysabel West Preserve,

1300sh – to 1500: Hike to understand the Ramona Plutonic Complex with commentary by Mike Thacker
Round trip ~2.4 miles, Gross Elevation Gain ~500 feet

1500 – 1600: Additional stops, time permitting

1600 – 1700: Arrive at Menghini Winery, set up your temporary homesteads, enjoy light conversation over drinks with friends, enjoy the rare opportunity to camp among the vineyards and orchards of Julian

1700 - ____: Dinner (provided), evening enjoyment and slumber

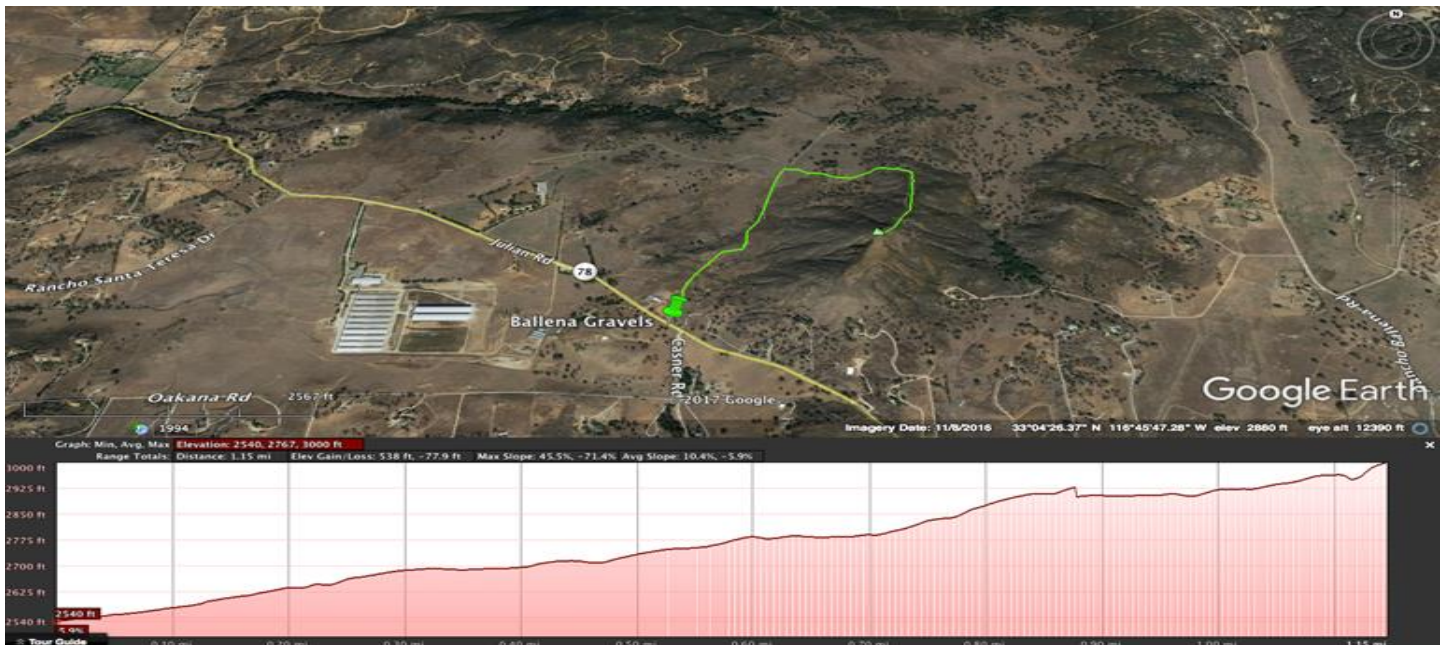
2200 – 0700: Quiet hours

October 15, 2017

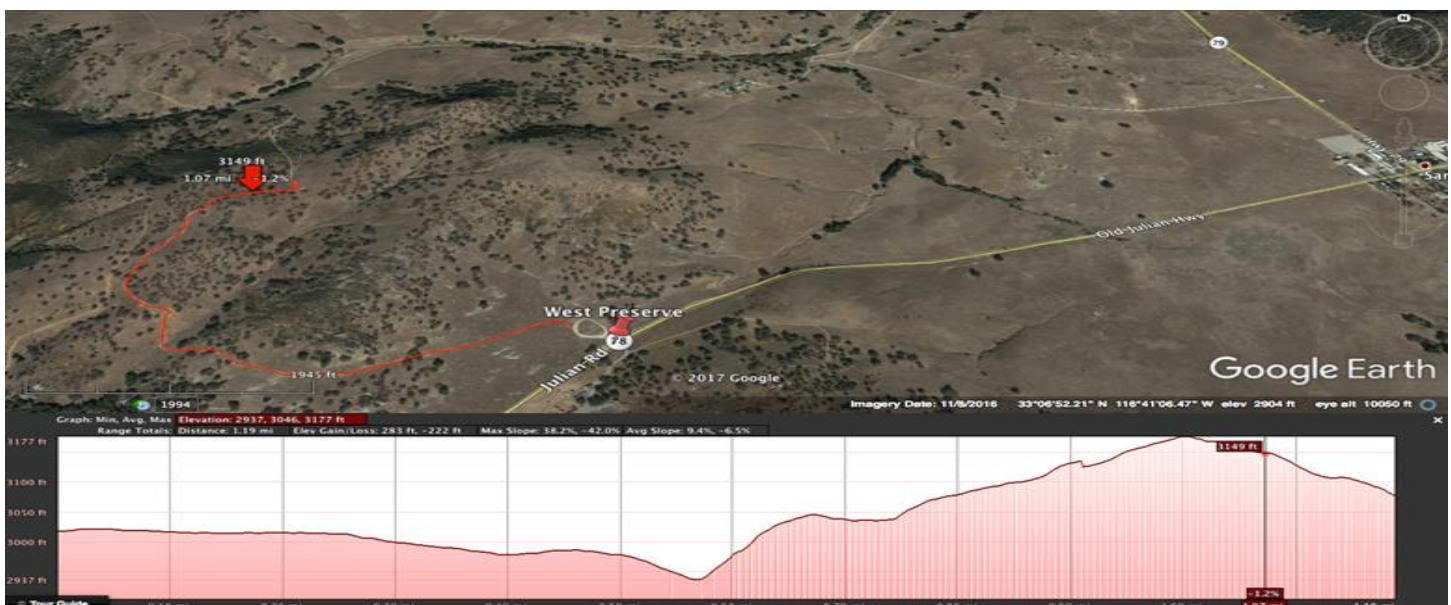
0700 – 0800: Breakfast (provided) and to-go-lunch (provided) for the afternoon

0800 – 1100: Rancito Mine at Right Fender Ranch, with commentary by Monte Murbach and Mike Hart. **HIGH CLEARANCE VEHICLES ONLY**

1100 – 1300: Subsurface exploration of the Eagle Mine with commentary by the mine's curators. Enjoy your lunch (previously provided) and depart the field trip at your leisure!



General topo profile along the hike towards the ballena gravels



UPCOMING MEETINGS

Meetings are usually held on the 3rd Wednesday of the month but may change to accommodate the speaker and meeting place schedules. Check the SDAG web site for updates.

November 14, 2017 *2nd Tuesday*	Pat Abbott Phil's BBQ—Point Loma
December 13, 2017 *2nd Wednesday*	Tom Demere San Diego Natural History Museum

2017 SDAG EXECUTIVE COMMITTEE

PRESIDENT – Rupert Adams, adams@geoconinc.com

VICE PRESIDENT - Chris Livesey, liveseychris@yahoo.com

SECRETARY – Ken Haase, secretary@sandiegogeologists.org

TREASURER – Adam Avakian, adam.avakian@aecom.com

PUBLICATIONS – Lowell Lindsay; *Sunbelt Publications*; Ph: (619) 258-4911, x111; llindsay@sunbeltpub.com

WEBMASTER – Carolyn Glockhoff; *Caro-Lion Enterprises*, Ph: (858) 549-3396; carolyn@caro-lion.com

SDAG SECRETARY'S CORNER

President's Corner, October 2017

Greetings SDAG members!

September was another great meeting, with the biggest turn-out of the year so far, with Drake Singleton presenting his research on Late Holocene earthquakes on the Rose Canyon Fault. Once again, I would like to thank everyone for turning out in force, as strong attendance makes for a great event.

Fall has arrived, and with it our annual field trip! Hopefully by now, everybody has all the information they need and have signed up if they plan to attend. At last count, we have at least 52 people going, so it should be a great trip. Look out for a final e-mail with last minute details in the next few days or so.

As is customary, there is no monthly meeting in October. For November, Dr. Pat Abbott has stepped up to present his latest findings on the local geology of the Mission Trails area. The meeting will be at the Phil's BBQ event center in Point Loma, on Tuesday, November 14, 2017, not the normal Wednesday. To close out the year, we will be back at the Museum on Wednesday, December 13, 2017. We have held some discussions with the museum to avoid the issues that arose last year. This year we can look forward to extended meeting hours, an improved dining experience and a bar that takes cash and credit with lower prices! As is tradition, Dr. Tom Deméré will be our speaker...topic to be determined!

As always, please feel free to contact me at adams@geoconinc.com if you have questions, suggestions etc. regarding all matters SDAG related.

I look forward to seeing everyone again on the field trip and then on Tuesday, November 14, 2017 at Phil's BBQ Event Center in Point Loma.

Regards,



Rupert Adams | *Sr. Project Geologist / SDAG President*

GEOCON INCORPORATED

6960 Flanders Drive, San Diego, California 92121
P|858.558.6900 ext. 234 M|858.260.1214

adams@geoconinc.com / www.geoconinc.com / [Facebook](#) / [Linkedin](#)

Geological Society of America Annual Meeting

<https://www.geosociety.org/>

2017

Abstract Deadline: August 1, 2017

Early Registration Deadline: August 18, 2017

Meeting Dates: October 22-25, 2017 in Seattle, Washington

2018

Field Trip Submission Deadline: December 1, 2017

Session and Short Courses Deadline: February 1, 2018

Abstract Deadline: August 14, 2018

FOR SALE: Hargrave Environmental Consulting. Lots of equipment and supplies. \$50k.

Contact: clhargrave@gmail.com

Have you ever wanted to run through an active quarry surrounded by Early Cretaceous Santiago Peak Volcanics? Well now is your chance!

Vulcan Chula Vista is hosting a 3.7 and 7.4 mile run through their quarry in Chula Vista. The event is tax deductible and proceeds go the Chula Vista Fire Fighter Association. The event will take place on October 28th.

Visit the website for pricing and sign up information:

<http://quarrycrusherrun.com/san-diego/>

Department of Geological Sciences

College of Sciences

Blue Gold Area of Excellence

Hydrologist/Hydrogeologist

AY2017/2018

*The Position – Assistant Professor (Tenure Track), Hydrologist/
Hydrogeologist*

The San Diego State University Department of Geological Sciences invites applications for a HYDROLOGIST or HYDROGEOLOGIST at the assistant professor level. We seek to hire a candidate with demonstrated expertise in hydrogeology or hydrology using applied geophysics, geochemistry, computational methods and/or geospatial techniques. Areas of focus may include, but are not limited to, fractured flow, fault-controlled flow, critical zone hydrology, rock-water interactions, water quality and water quantity. The successful candidate will be expected to develop a vigorous, externally-funded, independent research program with student participation. Contribution to the Department of Geological Sciences teaching mission and participation in University and/or community service is also expected. Candidates should have a PhD in Geology or related field, relevant post-doctoral experience, a strong record of research accomplishments, external funding and a demonstrated capacity for teaching.

Additional information and application procedures are available at <https://apply.interfolio.com/43919>. Review of applications will begin on 1 November 2017 and continue until the position is filled. Please direct questions about the position to the search committee chair, Dr. Thomas Rockwell, trockwell@mail.sdsu.edu.

SDSU is a Title IX equal opportunity employer.

Department of Geological Sciences

College of Sciences

Structural Geology/Tectonics

AY2017/2018

The Position – Assistant Professor (Tenure Track), Structural/Tectonic Geology

The San Diego State University Department of Geological Sciences invites applications for a tenure-track position in STRUCTURAL GEOLOGY/TECTONICS at the Assistant Professor level. We seek to hire a candidate who uses field-based and/or computational models to address questions related to structural deformation in regions of active tectonics. Specific areas of research might include any aspects of structural geology and/or active tectonics through the use of field studies, applied geophysics, computational techniques and/or models. The successful candidate will be expected to develop a vigorous, externally-funded, independent research program with student participation. Contribution to the Department of Geological Sciences teaching mission and participation in University and/or community service is also expected. Candidates should have a PhD in Geology or related field, relevant post-doctoral experience, a strong record of research accomplishments, external funding and a demonstrated capacity for teaching.

Additional information and application procedures are available at <https://apply.interfolio.com/43917>. Review of applications will begin on 1 November 2017 and continue until the position is filled. Please direct questions about the position to the search committee chair, Dr. Thomas Rockwell, trockwell@mail.sdsu.edu.

SDSU is a Title IX, equal opportunity employer.

de maximis, inc., a nationwide firm specializing in **project coordination**, currently has opportunities in Southern California. We are currently looking to fill the following position:

Project Manager: Candidate would have a B.S. Degree in Geology, Biology, Chemistry, or Engineering (Mechanical, Chemical or Civil). Professional Registration or ability to obtain within two years, and Masters degree is a plus. Candidate should have 5 to 10 years relevant experience in the environmental consulting industry and familiarity with local regulatory agencies, RWQCB, DTSC and EPA and guidelines especially CERCLA and the NCP. Familiarity with chlorinated solvents, such as TCE is a plus.

Candidate needs to have demonstrated site investigation/remediation knowledge. Working knowledge of groundwater monitoring, treatment system design, construction or operation including systems such as Air Stripping, SVE, DPE, LGAC, and VGAC are a plus. Additional skills include work plan and report preparation, task management, cost estimating and scheduling experience. The candidate should be detail oriented and have excellent verbal and written communication skills. Position will be based in Southern California (preferably Orange or Los Angeles County but San Diego County is acceptable) and will require some travel. OSHA 40-hour training and valid California driver's license required.

de maximis, inc. offers competitive salaries and benefits, and a challenging work atmosphere. To learn more visit our website at: www.demaximis.com.

Qualified candidates should send resumes, along with a cover letter summarizing experience and salary requirements to:

de maximis, inc.

Attention: Mike Palmer

1322 Scott St, Suite 104

San Diego, CA 92106

mpalmer@demaximis.com

Interactive Fault Map for San Diego

As part of the update for the San Diego-Tijuana Earthquake Planning Scenario, Working Group No. 1's "Fault Map Subcommittee" has completed the first publicly available bi-national active and potentially active fault map. This interactive GIS map includes the first publicly available active and potentially fault map locations from the City of San Diego. The City of San Diego fault locations and activity of faults are based chiefly on interpretation of information contained in geologic reports by private consultants. The City of San Diego identifies active faults as Holocene ($\leq 11,000$ yr) and potentially active as Quaternary (up to 1.6my). City of San Diego fault investigations are ongoing that may require future revision of this map. This map is not a substitute for a site specific fault investigation. The map also includes an updated fault map layer from the State CGS. CGS suggests users defer to the City of San Diego fault data, where marked, for increased accuracy. The map also integrated the faults south of the border for a bi-national cross border view. You can expand the map legend on the left side to see the fault ages and sources for each layer that can be turned on or off for the map view. You can select from 1 of 12 base maps. You can click on the fault line on the map to see the meta-data source. This map includes the yellow dashed SURFACE FAULT RUPTURE location layer that will be used for the infrastructure, social, and economic impacts and emergency response for the update to the Earthquake Scenario. In addition, active and potentially active fault investigation locations from private companies are planned to be added to this map as a resource. This map is an on-going project and resource as our knowledge increases about local active and potentially active faults.

The link is available at: http://www.sandiegogeologists.org/Faults_map.html

I would like to thank Carolyn Glockhoff for her endless GIS work, Jim Quinn and the City for providing their data and time, Jerry Treiman with CGS for his time preparing the Surface Rupture and providing their new State fault data layer, and Luis Mendoza at CICESE for providing the faults south of the border. Please contact Diane Murbach (dianemurbach@gmail.com), Chair for the SD-TJ Earthquake Scenario Working Group #1 - Earth Science, if you have any questions, or see any errors on this new fault map.

Diane Murbach (619) 865-4333

Engineering Geologist, C.E.G.

CALL FOR ARTICLES

SDAG invites members to submit articles on their current research or an interesting project they are working on for publication in the monthly newsletter. The article should be no more than 1 page in length. Photos are welcomed; too. Please submit articles to the SDAG secretary via email.

PHOTO OF THE MONTH

If you would like to submit a photo, email them to secretary@sandiegogeologists.org and I will try and put them in the newsletter. Provide a short description of the picture.

I've got no cool photos to show!
Submit yours to be featured here!

SDAG RESEARCH TOOL

SDAG RESEARCH TOOL - A comprehensive listing of all papers published by SDAG, whether as annual field trip guidebooks or special publications, is now available on our website. Entries are sorted by primary author, or chronologically by date of publication, from our first guidebook in 1972, up the San Luis Rey River in 2013, from Coast to Cactus in 2014, and finally over the edge to the Coyote Mountains in 2015. These can be accessed or downloaded as .pdf files. They are fully searchable in Adobe Reader or Acrobat, so if you are researching a topic, "tsunami" for example, you can search for that keyword. This listing will be updated as new books are published. Thanks to Greg Peterson and Hargis + Associates, Inc., for making this possible. See the links below:

http://www.sandiegogeologists.org/SDAG_Pubs_authors.pdf

http://www.sandiegogeologists.org/SDAG_Pubs_chronological.pdf

REQUEST for 2017 SDAG/SDGS PUBLICATION SPONSORS

On behalf of the San Diego Geological Society, Inc. (SDGS), a public benefit 501(c)3 nonprofit educational corporation, we would like to request tax deductible Donations for our San Diego Association of Geologists (SDAG) group. The list of paid Sponsors and the forms to become a Sponsor are located on the SDAG web site at: <http://www.sandiegogeologists.org/Sponsors.html>.

Your donation will further the SDGS mission to promote geology and related fields in the greater San Diego region, operating through the San Diego Association of Geologists (SDAG), a committee of SDGS. To achieve our primary educational objective, we organize frequent field trips and maintain a program of monthly meetings featuring speakers on current geological topics. We also publish field trip guidebooks and other publications related to geology and natural history. We encourage scholarship and research by awarding scholarships from the elementary through graduate levels. With your \$100 "EMERALD" donation, your name/business will be listed as a sponsor on the SDAG web site (<http://www.sandiegogeologists.org/>) and in the monthly SDAG meeting newsletters. With your \$500 "RUBY" or \$1,000 or more "DIAMOND" level donation, your business card will also be included on the SDAG web site and in the monthly SDAG meeting newsletters. In addition, as a "\$1,000 or more DIAMOND" level donation you will be presented with a thank you plaque.

Should you have any questions regarding a Sponsorship, please contact our non-profit SDGS Secretary (Diane Murbach) at 619-865-4333.



HARGIS + ASSOCIATES, INC.
HYDROGEOLOGY • ENGINEERING

Hargis + Associates, Inc. is an environmental consulting firm specializing in hydrogeology and engineering. We are headquartered in San Diego, California and have offices in Mesa and Tucson, Arizona. Our practice areas include all aspects of hydrogeology and engineering.

As a client service organization, we pride ourselves in being attentive and efficient in meeting our client's needs and solving their problems. In addition to our technical expertise, communication and responsive coordination are hallmarks of our reputation.

We invite you to explore our website to learn more about our firm and the services we provide. We welcome the opportunity to discuss our consulting expertise directly with you.



Mobile Geochemistry Inc.

H&P Mobile Geochemistry is an industry-leading provider of environmental lab services. With ten mobile labs and five direct push sampling trucks and unparalleled experience, H&P's repertoire of environmental lab services includes many forms of environmental lab sampling techniques all the way to on site field analysis services. H&P has successfully and accurately performed environmental lab services delivering quality results to our clients for over 16 years.

2470 Impala Dr., Carlsbad, CA 92010
(800) 834-9888

Contact: Louise Adams or Suzie Nawikas



TETRA TECH

complex world | CLEAR SOLUTIONS™

Tetra Tech is a leading provider of consulting, engineering, and technical services worldwide. We are a diverse company, including individuals with expertise in science, research, engineering, construction, and information technology. Our strength is in collectively providing integrated services—delivering the best solutions to meet our clients' needs.

<http://www.tetrattech.com>

Contact: **Dave Bloom**



Contact: Rupert Adams, CEG

Geocon Incorporated
6960 Flanders Drive, San Diego, CA 92121
P | 858.558.6900

*San Diego / Riverside County / Palm Desert / Los Angeles /
Orange County / Bakersfield / Bay Area / Fairfield / Sacramento*



**EXCAVATING,
DEMOLITION, BREAKERS**

Atlas Excavating & Breakers has been providing operated equipment rentals and excavating services to contractors & geologists in San Diego and Riverside counties since 1991. We offer Mini Ex., 4x4 Backhoe & large excavators up to 75,000 pounds. "40 hour Haz Whopper" trained operator. Asphalt/concrete removal & replacement.

Contact: **Barry Anderson**

760-754-1337



**ENERGETIC
RESPONSIVE**

8(a) / SDB Certified

EXPERIENCED

858-275-6454

**Trevet is a San Diego-based environmental engineering
and consulting 8(a)-certified small business enterprise.**

- [Dr. Pat Abbott](#) — SDSU Professor of Geology, Emeritus
- Marty and Sherry Bloom
- Joe Corones
- Greg Cranham — Consulting Geologist
- Damon DeYoung — Battelle
- Dr. Margaret R. Eggers, CHG — [Eggers Environmental, Inc.](#)
- Phil Farquharson — [Geology Guy](#)
- Carolyn Glockhoff — [Caro-Lion Enterprises](#)
- Cari Gomes
- Woody Higdon — [Geotech Imagery Intl.](#)
- Blayne Hartman — [Hartman Environmental Geoscience](#)
- Rob Hawk
- Tom Lamb
- [Leighton Group](#)
- Lowell A. Lindsay & Diana Lindsay — [Sunbelt Publications/AESE](#)
- Dr. Monte Marshall — SDSU Prof. of Geology & Geophysics, Emeritus
- Dr. [John Minch](#)
- [James R. Ashby/Mission Geoscience, Inc.](#)
- Jennifer Morton — [Terramar Environmental](#)
- Monte and Diane Murbach — [Murbach Geotech](#)
- [Pacific Drilling Co.](#)
- Dr. Sarah Gray
- Les Reed — Geotechnical Exploration Inc.
- Rothman Creative (Fritz Rothman 619-278-1771)
- Gerald Shiller
- [Scott Snyder](#)
- [Southwest Geophysics, Inc.](#)
- David and Jan Steller
- Dr. Anne Sturz
- Mary Walke
- Carole L. Ziegler
-

Add yourself to this list - Sponsors, Corporate Sponsors, and Patrons provide a significant portion of SDGS's and SDAG's operating and scholarship budgets. SDGS is a 501(c)3 public benefit non-profit educational corporation. For more information, please see our Sponsorship Form.



SAN DIEGO ASSOCIATION OF GEOLOGISTS

www.sandiegogeologists.org

2017 MEMBERSHIP FORM

NAME: _____ DATE: _____

Please type or print clearly.

Home Address: _____

Work Address: _____

Please include company, university or other affiliation

Home E-mail Address: _____

Work E-mail Address: _____

NOTE: Your membership dues include delivery of the monthly SDAG newsletter and announcements to the email addresses given.

Phone: Home: _____ Work: _____ Cell: _____

Website: _____

Are you willing to serve as an **officer**? _____ Are you willing to volunteer as a **guest speaker**? _____

Field(s) of Interest: _____

Dues: _____ Student Member (email delivery only) \$ 5.00
(check choice) _____ Regular Member (email delivery only) \$ 25.00
_____ Donation Student Scholarships \$ _____

☐ New/Returning Member ☐ Continuing Member

Please enclose a check payable to SDAG, and mail to:

San Diego Association of Geologists (SDAG)
3130 N Evergreen Street
San Diego, CA 92110

Revised 12/01/2016



SAN DIEGO ASSOCIATION OF GEOLOGISTS 2017 SPONSORSHIP FORM

NAME: _____ DATE: _____

(as you would like it to appear in Newsletter, Website, and Guidebook)

Please type or print clearly, and check ☒ preferred mailing address below.

☐ Residential Address: _____

☐ Office/School Address: _____

Website: _____

Home E-mail Address: _____

Work E-mail Address: _____

NOTE: Your Sponsorship includes a complimentary SDAG membership, and delivery of the monthly SDAG newsletter and announcements to the email addresses given.

Phone: Home: _____ Work: _____ Cell: _____

Donation Level and Consideration:

☐ **EMERALD \$100.00** (In addition to monthly recognition for your contribution, you are entitled to a free Internet "link" from SDAG Website. We also list all Sponsors in any publications printed this year)

☐ **RUBY \$500.00** (In addition to the above, you are entitled to an image of your business card in the monthly newsletter and SDAG Website)

☐ **DIAMOND \$1,000.00** (In addition to the above, you will receive a commemorative plaque in recognition for your most generous support of the organization)

New Member / Donor ☐ Continuing Member ☐ Change of mailing address: ☐

Are you interested to serve as an officer? _____ Willing to volunteer as a guest speaker? _____

Please make check payable to **San Diego Geological Society, Inc.**, a 501(c)3 public benefit nonprofit educational corporation (in order to claim a tax deduction), and mail to:

San Diego Geological Society, Inc.
3130 North Evergreen St.
San Diego, California 92110 *Thank you!*

*Donations may also be made
at monthly meetings.*

Revised 12/01/2016