

SAN DIEGO ASSOCIATION OF GEOLOGISTS

SDAG MEETING ANNOUNCEMENT

2nd Wednesday

Wednesday, August 9, 2017

SHORE INFRASTRUCTURE AND COASTAL EROSION

Presented by: ***Timu Gallien, Ph. D. (UCLA) and Ron Flick (Scripps)***

JOINT MEETING WITH SOCIETY OF AMERICAN MILITARY ENGINEERS

- Where:** **Marina Village—Catalina Room**
1936 Quivira Way, San Diego, CA 92109 (See Map)
- When:** 5:30 pm - Social Hour
6:30 pm - Dinner
7:30 pm - Program
- Dinner:** Traditional Buffett—Beef Dinner. Cash Bar (Walawender Tavern)
- Cost:** \$30 per person, \$5 discount for members, STUDENTS: \$15.
Add \$5 if you did not make a reservation.
- Reservations:** Make your reservation online at www.sandiegogeologists.org **no later than noon, Monday August 7th**. Reservations cannot be guaranteed after Monday at noon; but are always preferred over walk ins. **EARLY reservations well before the deadline are MUCH appreciated!**
- Directions:** FROM INTERSTATE 5: Take the SEA WORLD DRIVE exit. From SEA WORLD DRIVE, take WEST MISSION BAY DRIVE on your right. When you see the large green sign that says QUIVIRA ROAD, get in the farthest left of the two left turn lanes. Turn left, go one very short block and turn left again. Drive about one half mile and MARINA VILLAGE will be on your right.
- FROM INTERSTATE 8: Take the WEST MISSION BAY DRIVE exit to the right. You will be on INGRAHAM STREET for a short distance from which you take the next exit marked WEST MISSION BAY DRIVE on your right. When you see the large green sign that says QUIVIRA ROAD, get in the farthest left of the two turn lanes. Turn left, go one very short block and turn left again.

Man:



BIO

Timu Gallien's research examines evolving coastal hazards from climate change and urbanization using numerical modeling and high resolution field observations. Her research interests include urban coastal flood prediction, beach groundwater, coastal infrastructure, and nearshore processes. Gallien received her Ph.D. from UC Irvine. Before joining UCLA, she was a Chancellor's Post-Doctoral Scholar at Scripps Institution of Oceanography, UC San Diego.

Dr. Flick's professional career since 1978 involves academic research, administration, lecturing, consulting and public service in oceanography and nearshore processes including waves, tides and coastal erosion. His broad, practical experience includes theoretical, laboratory, field and sea-going work. He has served on several Scripps students' masters and doctoral committees, and on thesis committees at universities in Egypt and Mexico. Dr. Flick was born in 1948 in Freiburg im Breisgau, West Germany, and speaks German fluently. His family immigrated to the United States in 1951, settling in New York City. He now resides in San Diego with his wife and two children.

UPCOMING MEETINGS

Meetings are usually held on the 3rd Wednesday of the month but may change to accommodate the speaker and meeting place schedules. Check the SDAG web site for updates.

September 20, 2017	TBD
October 13—15, 2017	Julian Field Trip
November 15, 2017	TBD

2017 SDAG EXECUTIVE COMMITTEE

PRESIDENT – Rupert Adams, adams@geoconinc.com

VICE PRESIDENT - Chris Livesey, liveseychris@yahoo.com

SECRETARY – Ken Haase, secretary@sandiegogeologists.org

TREASURER – Adam Avakian, adam.avakian@aecom.com

PUBLICATIONS – Lowell Lindsay; *Sunbelt Publications*; Ph: (619) 258-4911, x111; fax:(619) 258-4916; llindsay@sunbeltpub.com

WEBMASTER – Carolyn Glockhoff; *Caro-Lion Enterprises*, Ph: (858) 549-3396; carolyn@caro-lion.com

SDAG SECRETARY'S CORNER

Secretary's Corner, August 2017

Greetings SDAG,

As we enter the dog days of summer, a reminder to stay cool and hydrated while outside exploring the geologic features of the Southern California area. We had a great turnout for the joint meeting with SCGS, I hope you all enjoyed the talk. This month we have a joint meeting but this time with the Society of American Military Engineers. We will be at Marina Village listening to a talk by Timu Gallien (UCLA) and Ron Flick (Scripps) about Shore Infrastructure and Coastal Erosion. The meeting is the 2nd Wednesday this month on August 9th so please get your signups in quickly.

Chris Livesey (VP) has finalized the 2017 Field Trip. See the itinerary and sign-up sheet in this newsletter. You can bring the signup to the next meeting or mail it to the address on the form. He has some great exploration of Julian planned so you don't want to miss it!

A thank you to everyone who has come to meetings this year, we have had great turnout and hope to continue to see that moving forward. See you on August 9th!

-Ken Haase

Secretary SDAG



Ken Haase | *Staff Geologist / SDAG Secretary*

GEOCON INCORPORATED

6960 Flanders Drive, San Diego, California 92121

P|858.558.6900 ext. 204 M|619.818.3425

haase@geoconinc.com / www.geoconinc.com / [Facebook](#) / [LinkedIn](#)

ANNOUNCEMENTS

SDAG Fall 2017 Fieldtrip—October 14th and 15th 2017.

Preliminary Field Trip itinerary

I am happy to announce this SDAG 2017 field trip update and general itinerary. As previously discussed, this trip will take you along State Route 78 in Ramona and State Route 79 through Julian. In an effort to break up the monotony of a typical roadside geology field trip, this year, two short hikes will be incorporated to invigorate you. Prior to crawling underground in the Eagle Mine and visiting the Ranchito mine, we will explore the local geology of the area, including the Ramona plutonic complex, ballena gravels precariously outcropped atop a mountain top, surficial deposits will be re-examined (optional stop time pending), and gold claim/prospecting locations. For your convenience and assurance, that I am not leading you atop a hillside no less grueling as Mount Himalaya; I have provided a topographic profile, courtesy of Google Earth. Please note the itinerary is preliminary and is subject to

October 14, 2017

0700 – 0800: Registration check-in, continental breakfast (provided), coffee, water, orange juice, receive your memorable gift

0800 – 1100: Hike to the ballena gravels with discussion by Pat Abbott
Round trip ~2.4 miles, Gross Elevation Gain ~600 feet

1100 – 1200: Miscellaneous stops pending time, gold claims, Pseudo Tsunami Deposits re-examined (speaker TBD and time permitting)

1200 – 1300sh: Lunch (provided) at Santa Ysabel West Preserve,

1300sh – to 1500: Hike to understand the Ramona Plutonic Complex with commentary by Mike Thacker
Round trip ~2.4 miles, Gross Elevation Gain ~500 feet

1500 – 1600: Additional stops, time permitting

1600 – 1700: Arrive at Menghini Winery, set up your temporary homesteads, enjoy light conversation over drinks with friends, enjoy the rare opportunity to camp among the vineyards and orchards of Julian

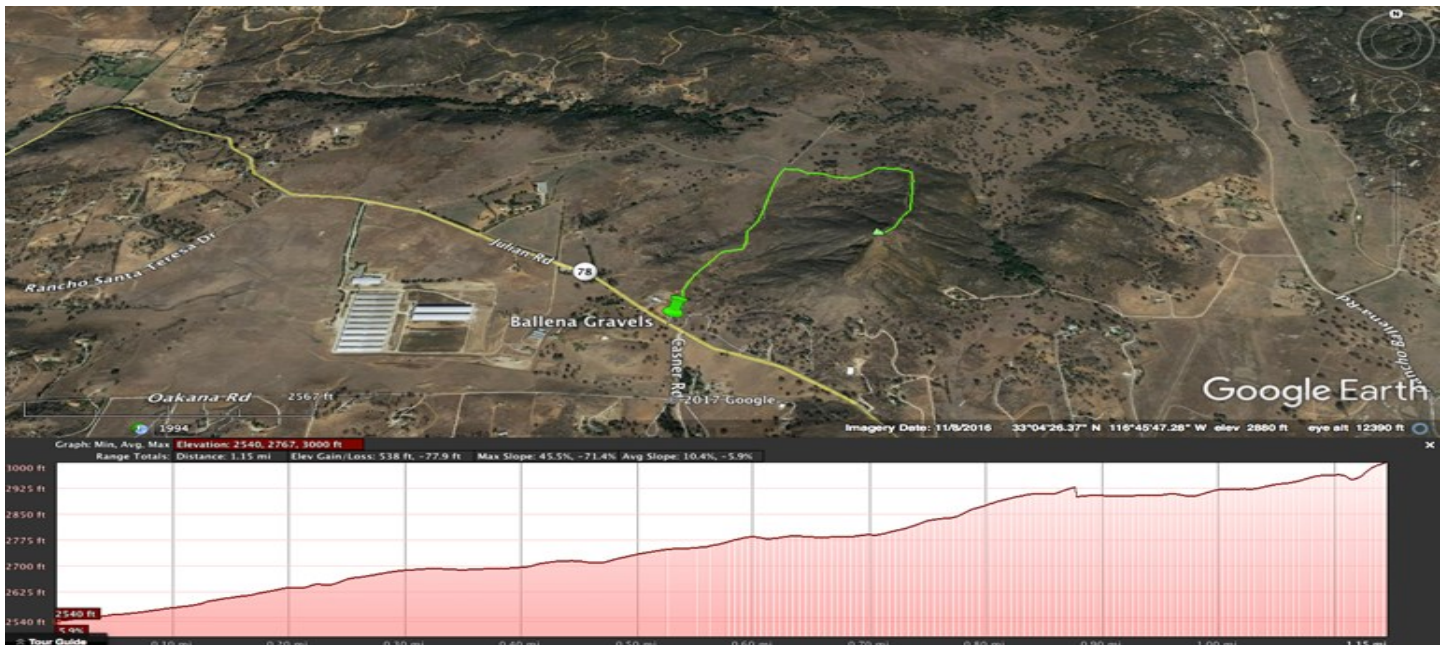
1700 - ____: Dinner (provided), evening enjoyment and slumber

October 15, 2017

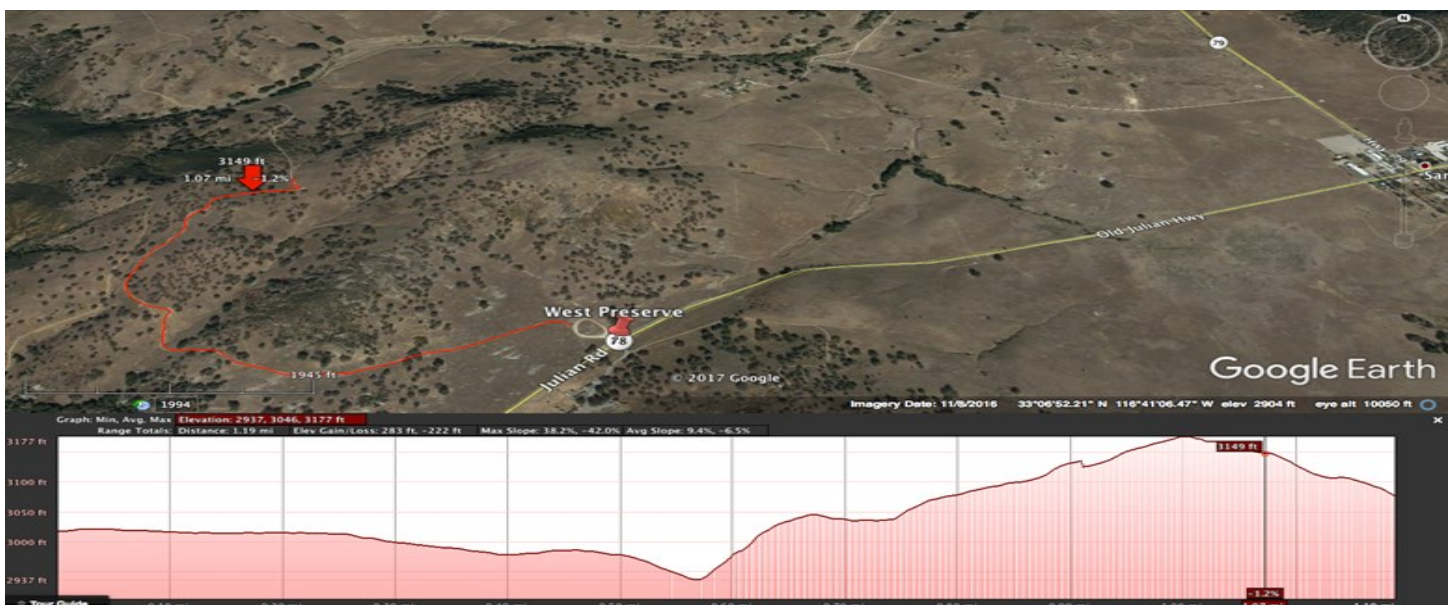
0700 – 0800: Breakfast (provided) and to-go-lunch (provided) for the afternoon

0800 – 1100: Rancito Mine at Right Fender Ranch, with commentary by Monte Murbach and Mike Hart. **HIGH CLEARANCE VEHICLES ONLY**

1100 – 1300: Subsurface exploration of the Eagle Mine with commentary by the mine's curators. Enjoy your lunch (previously provided) and depart the field trip at your leisure!



General topo profile along the hike towards the ballena gravels





SDAG Field Trip 2017

Julian-Banner District: A Road to Gold

The 2017 San Diego Association of Geologists annual field trip on October 14 and 15, 2017 will traverse along State Route 78 and 79, from Ramona towards Julian, California. Surficial deposits will be re-examined to draw new conclusions. Curiously propagated gravels atop peaks will bewilder you. A plutonic complex will be observed at a daunting scale. The history of gold mining will be told and lode deposits examined within a mine. Gold prospecting spots will be revealed! A more detailed timeline will be provided, as itinerary can change, but for planning purposes please be ready for an 8am start on Saturday and conclusion of the trip on the following Sunday afternoon. For those not interested in camping, hotel accommodations in the Julian area might be available, but are not included in the registration cost and must be reserved independently.

What is included:

- Camping access at Menghini Winery
(you will need to provide personal camping equipment)
(portable restrooms will be provided, no showers)
- 4 meals (Saturday lunch, Saturday dinner, Sunday breakfast & lunch)
- Snacks and beverages throughout trip
- 2017 SDAG fieldtrip Guidebook plus a bonus book
- Memorable gift
- A good time with friends and associates

Important Dates:

- September 10, 2017: Last day to register, without late fee
- **September 30, 2017: Last day to register late**
- October 1, 2017: Registration is closed
- October 14, 2017: Field trip begins!
- October 15, 2017: Field trip concludes.

Registration information is on the next page:



SDAG Field Trip 2017

Julian-Banner District: A Road to Gold

Registration Information

Name(s): _____

Address: _____

Phone No. _____

Email Address: _____

Party Quantity and Cost

Quantity

Cost

_____	Non-member(s): X \$175 =	_____
_____	Member(s): X \$150 =	_____
_____	Student(s): X \$75 =	_____

Total Amount Enclosed (late fee add \$15.00 per person) _____

Please note: registration fee is non-refundable and the event is rain or shine, events may change without notice

Make checks payable to San Diego Association of Geologists

Mail to: Leighton & Associates, Inc.
Attention: Chris Livesey
3934 Murphy Canyon Rd, Suite B-205
San Diego, Ca. 92123

Geological Society of America Annual Meeting

<https://www.geosociety.org/>

2017

Abstract Deadline: August 1, 2017

Early Registration Deadline: August 18, 2017

Meeting Dates: October 22-25, 2017 in Seattle, Washington

2018

Field Trip Submission Deadline: December 1, 2017

Session and Short Courses Deadline: February 1, 2018

Abstract Deadline: August 14, 2018

JOB OPPORTUNITY

de maximis, inc., a nationwide firm specializing in **project coordination**, currently has opportunities in Southern California. We are currently looking to fill the following position:

Project Manager: Candidate would have a B.S. Degree in Geology, Biology, Chemistry, or Engineering (Mechanical, Chemical or Civil). Professional Registration or ability to obtain within two years, and Masters degree is a plus. Candidate should have 5 to 10 years relevant experience in the environmental consulting industry and familiarity with local regulatory agencies, RWQCB, DTSC and EPA and guidelines especially CERCLA and the NCP. Familiarity with chlorinated solvents, such as TCE is a plus.

Candidate needs to have demonstrated site investigation/remediation knowledge. Working knowledge of groundwater monitoring, treatment system design, construction or operation including systems such as Air Stripping, SVE, DPE, LGAC, and VGAC are a plus. Additional skills include work plan and report preparation, task management, cost estimating and scheduling experience. The candidate should be detail oriented and have excellent verbal and written communication skills. Position will be based in Southern California (preferably Orange or Los Angeles County but San Diego County is acceptable) and will require some travel. OSHA 40-hour training and valid California driver's license required.

de maximis, inc. offers competitive salaries and benefits, and a challenging work atmosphere. To learn more visit our website at: www.demaximis.com.

Qualified candidates should send resumes, along with a cover letter summarizing experience and salary requirements to:

de maximis, inc.

Attention: Mike Palmer

1322 Scott St, Suite 104

San Diego, CA 92106

Interactive Fault Map for San Diego

As part of the update for the San Diego-Tijuana Earthquake Planning Scenario, Working Group No. 1's "Fault Map Subcommittee" has completed the first publicly available bi-national active and potentially active fault map. This interactive GIS map includes the first publicly available active and potentially fault map locations from the City of San Diego. The City of San Diego fault locations and activity of faults are based chiefly on interpretation of information contained in geologic reports by private consultants. The City of San Diego identifies active faults as Holocene ($\leq 11,000$ yr) and potentially active as Quaternary (up to 1.6my). City of San Diego fault investigations are ongoing that may require future revision of this map. This map is not a substitute for a site specific fault investigation. The map also includes an updated fault map layer from the State CGS. CGS suggests users defer to the City of San Diego fault data, where marked, for increased accuracy. The map also integrated the faults south of the border for a bi-national cross border view. You can expand the map legend on the left side to see the fault ages and sources for each layer that can be turned on or off for the map view. You can select from 1 of 12 base maps. You can click on the fault line on the map to see the meta-data source. This map includes the yellow dashed SURFACE FAULT RUPTURE location layer that will be used for the infrastructure, social, and economic impacts and emergency response for the update to the Earthquake Scenario. In addition, active and potentially active fault investigation locations from private companies are planned to be added to this map as a resource. This map is an on-going project and resource as our knowledge increases about local active and potentially active faults.

The link is available at: http://www.sandiegogeologists.org/Faults_map.html

I would like to thank Carolyn Glockhoff for her endless GIS work, Jim Quinn and the City for providing their data and time, Jerry Treiman with CGS for his time preparing the Surface Rupture and providing their new State fault data layer, and Luis Mendoza at CICESE for providing the faults south of the border. Please contact Diane Murbach (dianemurbach@gmail.com), Chair for the SD-TJ Earthquake Scenario Working Group #1 - Earth Science, if you have any questions, or see any errors on this new fault map.

Diane Murbach (619) 865-4333

Engineering Geologist, C.E.G.

CALL FOR ARTICLES

SDAG invites members to submit articles on their current research or an interesting project they are working on for publication in the monthly newsletter. The article should be no more than 1 page in

PHOTO OF THE MONTH

If you would like to submit a photo, email them to secretary@sandiegogeologists.org and I will try and put them in the newsletter. Provide a short description of the picture.

I've got no cool photos to show!
Submit yours to be featured here!

SDAG RESEARCH TOOL

SDAG RESEARCH TOOL - A comprehensive listing of all papers published by SDAG, whether as annual field trip guidebooks or special publications, is now available on our website. Entries are sorted by primary author, or chronologically by date of publication, from our first guidebook in 1972, up the San Luis Rey River in 2013, from Coast to Cactus in 2014, and finally over the edge to the Coyote Mountains in 2015. These can be accessed or downloaded as .pdf files. They are fully searchable in Adobe Reader or Acrobat, so if you are researching a topic, "tsunami" for example, you can search for that keyword. This listing will be updated as new books are published. Thanks to Greg Peterson and Hargis + Associates, Inc., for making this possible. See the links below:

http://www.sandiegogeologists.org/SDAG_Pubs_authors.pdf

http://www.sandiegogeologists.org/SDAG_Pubs_chronological.pdf

REQUEST for 2017 SDAG/SDGS and

On behalf of the San Diego Geological Society, Inc. (SDGS), a public benefit 501(c)3 nonprofit educational corporation, we would like to request tax deductible Donations for our San Diego Association of Geologists (SDAG) group. The list of paid Sponsors and the forms to become a Sponsor are located on the SDAG web site at: <http://www.sandiegogeologists.org/Sponsors.html>.

Your donation will further the SDGS mission to promote geology and related fields in the greater San Diego region, operating through the San Diego Association of Geologists (SDAG), a committee of SDGS. To achieve our primary educational objective, we organize frequent field trips and maintain a program of monthly meetings featuring speakers on current geological topics. We also publish field trip guidebooks and other publications related to geology and natural history. We encourage scholarship and research by awarding scholarships from the elementary through graduate levels. With your \$100 "EMERALD" donation, your name/business will be listed as a sponsor on the SDAG web site (<http://www.sandiegogeologists.org/>) and in the monthly SDAG meeting newsletters. With your \$500 "RUBY" or \$1,000 or more "DIAMOND" level donation, your business card will also be included on the SDAG web site and in the monthly SDAG meeting newsletters. In addition, as a "\$1,000 or more DIAMOND" level donation you will be presented with a thank you plaque.

Should you have any questions regarding a Sponsorship, please contact our non-profit SDGS Secretary (Diane Murbach) at 619-865-4333.



HARGIS+ASSOCIATES, INC.
HYDROGEOLOGY • ENGINEERING

Hargis + Associates, Inc. is an environmental consulting firm specializing in hydrogeology and engineering. We are headquartered in San Diego, California and have offices in Mesa and Tucson, Arizona. Our practice areas include all aspects of hydrogeology and engineering.

As a client service organization, we pride ourselves in being attentive and efficient in meeting our client's needs and solving their problems. In addition to our technical expertise, communication and responsive coordination are hallmarks of our reputation.

We invite you to explore our website to learn more about our firm and the services we provide. We welcome the opportunity to discuss our consulting expertise directly with you.

H&P Mobile Geochemistry Inc.

H&P Mobile Geochemistry is an industry-leading provider of environmental lab services. With ten mobile labs and five direct push sampling trucks and unparalleled experience, H&P's repertoire of environmental lab services includes many forms of environmental lab sampling techniques all the way to on site field analysis services. H&P has successfully and accurately performed environmental lab services delivering quality results to our clients for over 16 years.

2470 Impala Dr., Carlsbad, CA 92010
(800) 834-9888

Contact: Louise Adams or Suzie Nawikas



Tetra Tech is a leading provider of consulting, engineering, and technical services worldwide. We are a diverse company, including individuals with expertise in science, research, engineering, construction, and information technology. Our strength is in collectively providing integrated services—delivering the best solutions to meet our clients' needs.
<http://www.tetrattech.com>

Contact: **Dave Bloom**



Contact: Rupert Adams, CEG

Geocon Incorporated
6960 Flanders Drive, San Diego, CA 92121
P | 858.558.6900

*San Diego / Riverside County / Palm Desert / Los Angeles /
Orange County / Bakersfield / Bay Area / Fairfield / Sacramento*



**EXCAVATING,
DEMOLITION, BREAKERS**

Atlas Excavating & Breakers has been providing operated equipment rentals and excavating services to contractors & geologists in San Diego and Riverside counties since 1991. We offer Mini Ex., 4x4 Backhoe & large excavators up to 75,000 pounds. "40 hour Haz Whopper" trained operator. Asphalt/concrete removal & replacement.

Contact: **Barry Anderson**

760-754-1337



**ENERGETIC
RESPONSIVE**

8(a) / SDB Certified

EXPERIENCED

858-275-6454

Trevet is a San Diego-based environmental engineering and consulting 8(a)-certified small business enterprise.

- [Dr. Pat Abbott](#) — SDSU Professor of Geology, Emeritus
- Marty and Sherry Bloom
- Joe Corones
- Greg Cranham — Consulting Geologist
- Damon DeYoung — Battelle
- Dr. Margaret R. Eggers, CHG — [Eggers Environmental, Inc.](#)
- Phil Farquharson — [Geology Guy](#)
- Carolyn Glockhoff — [Caro-Lion Enterprises](#)
- Cari Gomes
- Blayne Hartman — [Hartman Environmental Geoscience](#)
- Rob Hawk
- Tom Lamb
- [Leighton Group](#)
- Lowell A. Lindsay & Diana Lindsay — [Sunbelt Publications/AESE](#)
- Dr. Monte Marshall—SDSU Prof. of Geology & Geophysics, Emeritus
- Dr. [John Minch](#)
- [James R. Ashby/Mission Geoscience, Inc.](#)
- Jennifer Morton — [Terramar Environmental](#)
- Monte and Diane Murbach — [Murbach Geotech](#)
- [Pacific Drilling Co.](#)
- Dr. Sarah Gray
- Les Reed—Geotechnical Exploration Inc.
- Rothman Creative (Fritz Rothman 619-278-1771)
- Gerald Shiller
- [Scott Snyder](#)
- [Southwest Geophysics, Inc.](#)
- David and Jan Steller
- Dr. Anne Sturz
- Mary Walke
- Carole L. Ziegler

Add yourself to this list - Sponsors, Corporate Sponsors, and Patrons provide a significant portion of SDGS's and SDAG's operating and scholarship budgets. SDGS is a 501(c)3 public benefit non-profit educational corporation. For more information, please see our Sponsorship Form.