

# SAN DIEGO ASSOCIATION OF GEOLOGISTS

[www.sandiegoeologists.org](http://www.sandiegoeologists.org)

---

## *SDAG MEETING ANNOUNCEMENT*

---

**TUESDAY, December 13, 2016**

Research Updates from the San Diego Natural  
History Museum

*Presented by:*

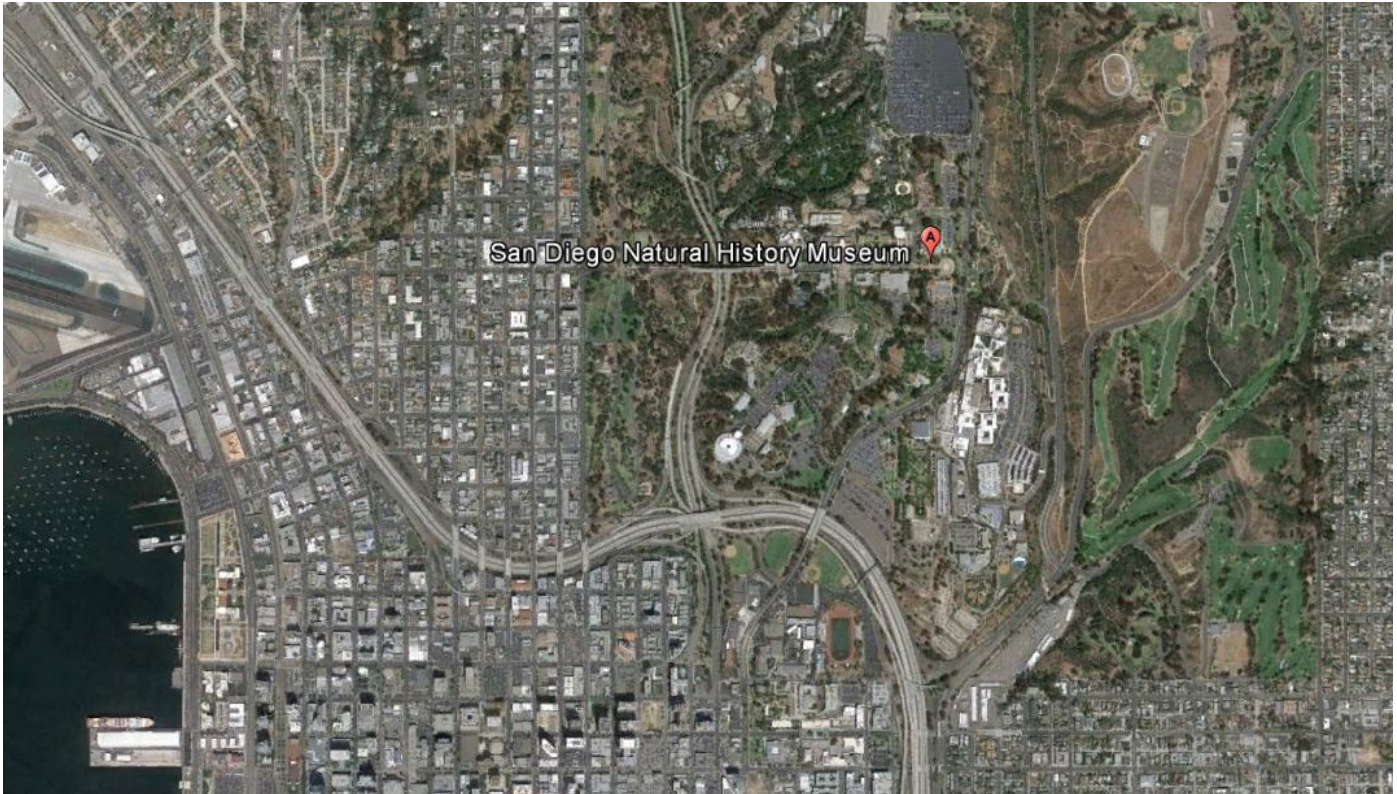
**Dr. Tom Deméré**

Department of Paleontology, San Diego Natural History Museum

- Where:** **San Diego Natural History Museum**  
1788 El Prado, San Diego, 92101 (See Map)
- When:** 6:00 pm - Social Hour  
7:00 pm - Dinner  
8:00 pm - Program
- Dinner:** Deluxe Mexican Buffet. Cash bar
- Cost:** \$40 per person, \$5 discount for members, STUDENTS and PROFESSORS: \$25.  
Add \$5 if you did not make a reservation.
- Reservations:** Make your reservation **online** at [www.sandiegoeologists.org](http://www.sandiegoeologists.org) **no later than noon, Monday December 12th**. Reservations cannot be guaranteed after Monday at noon; but are always preferred over walk ins. Reservations well before the deadline are MUCH appreciated.
- Directions:** FROM SOUTH INTERSTATE 5: Take the PERSHING DRIVE exit. Make a left on FLORIDA DRIVE and then another left on ZOO PLACE. At the top of the hill make a left onto PARK BOULEVARD and then turn right on VILLAGE Place. Park wherever you can. The entrance to the Museum is on the north side of the building.

FROM INTERSTATE 8: Take the 163 south and exit PARK BOULEVARD. Turn left and head north on PARK BLVD for 0.9 miles. Turn left on Village Place and park wherever you can. The entrance to the Museum is on the north side of the building

**Map:**



---

## **SPEAKER BIO**

---

### ***Dr. Tom Deméré***

Tom attended San Diego State University (BS Geology), USC (MS Geology) and UCLA (Ph.D. Biology). After an initial period working in the petroleum industry, Tom moved to the San Diego Natural History Museum where he has been employed since 1979. He is currently Curator of the Department of Paleontology, where he occupies the Joshua L. Baily, Jr. Chair of Paleontology. Tom's research interests are in Cenozoic paleontology and geology of Southern California and Baja California. His invertebrate paleontological work has concentrated on Plio-Pleistocene molluscan biostratigraphy, paleoecology, and taphonomy. His vertebrate paleontological work focuses on the evolutionary history of marine mammals (pinnipeds and cetaceans). In pursuing this line of research

Tom is involved with field investigations to discover new fossils of pinnipeds and cetaceans, with anatomical investigations of both fossil and Recent marine mammals, and with functional analysis of feeding and locomotor anatomical features.

Since the early 1980s, Tom has been deeply involved with conservation of the rich and unique paleontological resources of Southern California. In this regard, he has helped put together guidelines for determining the paleontological resource sensitivity of geological deposits that occur in the region. Tom has also headed up the Museum's Department of PaleoServices, whose goal it is to mitigate negative construction-related impacts to sensitive paleontological resources. Typically, mitigation involves monitoring of construction activities, discovery and salvaged of unearched fossil remains, preparation of salvaged fossils, identification and curation of prepared fossils, and storage of curated fossils in perpetuity for future generations. Over the past 33 years this effort has resulted in the recovery of countless rare and/or unique fossil remains, many of which are, or have been, displayed for the public at the Museum.

As an adjunct faculty at nearby SDSU in both the Department of Geological Sciences and Department of Biology, Tom has had the opportunity to advise a number of undergraduate and graduate students on various paleontological projects. Tom's involvement with students increased in 2009 when he began teaching courses (Geobiology and Historical Geology) in the Department of Geological Sciences, where he was an undergraduate student in the 1970s.

---

## ***UPCOMING MEETINGS***

---

Meetings are usually held on the 3rd Wednesday of the month but may change to accommodate the speaker and meeting place schedules. Check the SDAG web site for updates.

|                   |  |
|-------------------|--|
| January 18, 2017  | Monte Marshall @ The Marina Village Presenting:<br>The Geology and Beauty of Patagonia |
| February 15, 2017 | TBD  |
| March 15, 2017    | TBD  |

## **2016 SDAG EXECUTIVE COMMITTEE**

**PRESIDENT** - Randy Wagner; Ph: (760) 877-3490 [randallwagner@live.com](mailto:randallwagner@live.com)

**VICE PRESIDENT** - Rupert Adams, [rsa\\_sdag@geoconinc.com](mailto:rsa_sdag@geoconinc.com)

**SECRETARY** - Chris Livesey, [secretary@sandiegogeologists.org](mailto:secretary@sandiegogeologists.org)

**TREASURER** - Ken Haase, [kenwhaase@gmail.com](mailto:kenwhaase@gmail.com)

**PUBLICATIONS** – Lowell Lindsay; *Sunbelt Publications*; Ph: (619) 258-4911, x111; fax:(619) 258-4916;  
[llindsay@sunbeltpub.com](mailto:llindsay@sunbeltpub.com)

**WEBMASTER** – Carolyn Glockhoff; *Caro-Lion Enterprises*, Ph: (858) 549-3396; [carolyn@caro-lion.com](mailto:carolyn@caro-lion.com)

---

## ***ANNOUNCEMENTS***

---

### **Call for Papers, Speakers, and Spectators**

#### **SDAG Fall 2017 Fieldtrip**

San Diego is a county with abundant points of interest. There is active faulting, landslides, great weather, and mountains that overlook majestic landscapes. Julian, California encompasses all of these traits and more! The 2017 fieldtrip will focus on points of interest in the region, including gold mining and faulting; however the trip is in the early stages of planning and is subject to change in direction and core focus. Thus, submit your abstracts, articles, and ideas early!

---

### **One Stop Wonder**

January 7 and 8, 2017

**Ann Bykerk-Kauffman is planning a geology trip out to the Coyote Mountains!**

**Saturday, January 7:** A walking tour through the scenic Painted Gorge area of the eastern Coyote Mountains to examine beautifully exposed Paleozoic(?) metasedimentary rocks as well as Neogene volcanic rocks, nonmarine sedimentary rocks, and fossiliferous marine sedimentary rocks. These lithologies are juxtaposed along dramatic buttress unconformities and multiple generations of faults marked by spectacular slickensided surfaces.

**Sunday, January 8:** A vigorous hike, largely off-trail, through the Wilderness Area of the Coyote Mountains to examine faulted metamorphic rocks and marine sedimentary rocks, many of which derive from the Colorado River. We will cross the range to get a spectacular view of the remote roadless north flank of the range.

- Ann Bykerk-Kauffman

---

## **31<sup>st</sup> Annual Desert Symposium and Field Trip**

### **Eastern California Shear Zone (ECSZ) Changes in Altitude**

Symposium: April 14 – 15, 2017

Field Trip: April 16 – 17, 2017 (This year the field trip will return to Desert Studies Center each night)

Share your desert research through an oral presentation or poster. The Desert Symposium is open to research presentations related to any area of desert studies. Students are especially encouraged to present and compete for the Adams Best Student Presentation Awards.

Abstract deadline for presentations is January 20, 2017

Manuscript Deadline for 2017 Symposium Volume is February 20, 2017. Examples of manuscript format can be viewed in the 2016 Symposium volume at:

<http://goo.gl/vBjXbW>

Or see instructions for Authors on the DSD website. Additional information can be found by visiting California State University Fullerton

For expedited updates contact [desertstudiescenter@fullerton.edu](mailto:desertstudiescenter@fullerton.edu) to join the email distribution list

---

### **NEW Interactive Fault Map for San Diego**

As part of the update for the San Diego-Tijuana Earthquake Planning Scenario, Working Group No. 1's "Fault Map Subcommittee" has completed the first publicly available bi-national active and potentially active fault map. This interactive GIS map includes the first publicly available active and potentially fault map locations from the City of San Diego. The City of San Diego fault locations and activity of faults are based chiefly on interpretation of information contained in geologic reports by

private consultants. The City of San Diego identifies active faults as Holocene ( $\leq 11,000$ yr) and potentially active as Quaternary (up to 1.6my). City of San Diego fault investigations are ongoing that may require future revision of this map. This map is not a substitute for a site specific fault investigation. The map also includes an updated fault map layer from the State CGS. CGS suggests users defer to the City of San Diego fault data, where marked, for increased accuracy. The map also integrated the faults south of the border for a bi-national cross border view. You can expand the map legend on the left side to see the fault ages and sources for each layer that can be turned on or off for the map view. You can select from 1 of 12 base maps. You can click on the fault line on the map to see the meta-data source. This map includes the yellow dashed SURFACE FAULT RUPTURE location layer that will be used for the infrastructure, social, and economic impacts and emergency response for the update to the Earthquake Scenario. In addition, active and potentially active fault investigation locations from private companies are planned to be added to this map as a resource. This map is an on-going project and resource as our knowledge increases about local active and potentially active faults.

The link is available at: [http://www.sandiegogeologists.org/Faults\\_map.html](http://www.sandiegogeologists.org/Faults_map.html)

I would like to thank Carolyn Glockhoff for her endless GIS work, Jim Quinn and the City for providing their data and time, Jerry Treiman with CGS for his time preparing the Surface Rupture and providing their new State fault data layer, and Luis Mendoza at CICESE for providing the faults south of the border. Please contact Diane Murbach ([dianemurbach@gmail.com](mailto:dianemurbach@gmail.com)), Chair for the SD-TJ Earthquake Scenario Working Group #1 - Earth Science, if you have any questions, or see any errors on this new fault map.

**Diane Murbach** (619) 865-4333  
Engineering Geologist, C.E.G.  
[www.murbachgeotech.com](http://www.murbachgeotech.com)

---

The Earthquake Engineering Research Institute (EERI) San Diego Chapter, the University of California San Diego (UCSD) Extension and the Geolnstitute San Diego Chapter are organizing the 2nd Workshop on Geotechnical Earthquake Engineering with the topic "Dealing with the Consequences of Liquefaction" on Wednesday-Thursday, March 29-30, 2017 in UCSD campus, San Diego, California. As you may remember, the first workshop in 2014 was a success with almost 300 attendees (<https://sandiego.eeri.org/?p=203>).

The second workshop will honor the lifetime achievements and contributions of Prof. Kenji Ishihara to the field of geotechnical earthquake engineering. The afternoon session of the second day of the workshop ([Thursday, March 30, 2017](#)) will be entirely devoted to honor Prof. Ishihara and the session will be hosted by Prof. I.M. Idriss. We will have distinguished speakers from US, Japan, New Zealand, Europe and South America sharing with us their experiences with liquefaction mitigation, recent major earthquakes and highlighting the contributions of Prof. Kenji Ishihara. We are in the process on preparing the final program and the website for the workshop. A one-day short course before the

workshop on Tuesday, March 28 is also in the plans.

We would much appreciate your participation in this workshop. Please mark your calendars and save the dates.

Hope you will be able to join us and be part of this big event.

If you have any question, feedback or wish to sponsor this event, please feel free to contact the Chair of the Organizing Committee, Dr. Jorge Meneses, at [jmenesesl@gmail.com](mailto:jmenesesl@gmail.com)

Thanks and looking forward to seeing all of you in beautiful San Diego,

Jorge

President, EERI San Diego Chapter

**PROF.**  
**KENJI ISHIHARA**



#### Bio of Professor Kenji Ishihara

Prof. Kenji Ishihara was born in Chiba, Japan in 1934. He started his studies in Civil Engineering at the University of Tokyo, obtaining BS-degree in 1957, MS-degree in 1959, and Ph.D-degree in 1963. During one-year period from 1966 to 1967, he was a Visiting Research Associate at the University of Illinois in Urbana, U.S.A. under the guidance of late Professor R. B. Peck. He has been affiliated with the University of Tokyo since then, taking the position of professorship in geotechnical engineering since 1977. On his retirement from the University of Tokyo in 1995 he took up the position of Professor of Geotechnical Engineering at the Tokyo University of Science and then at Chuo University in 2001.

He served for ISSMFE as secretary of the Japanese National Committee for the period of 7 years between 1970 and 1976 during which time he attended the Executive Committee meeting of ISSMFE in Sydney, 1971 as a voting member representing the Japanese National Society. Since then, he often represented Japan in several Executive Committee Meetings of ISSMFE and those of Asian region. He acted as Vice-President of Asian region of ISSMFE during the period of 1989-1993.

His major research interest covers problems in soil dynamics associated with earthquakes, such as liquefaction of sandy deposits, and seismic stability of slopes and earth structures. He wrote about 250 papers on the these subjects.

He has served on various occasions as consultant or adviser to UNESCO projects (Balkan region,

India) and UNDP project (Chile, India, Iran). He has participated in the geotechnical investigations of earthquakes worldwide such as those in Romania (1977), Yugoslavia (1979), Chile (1985), Mexico (1985), Ecuador (1986), Soviet Armenia (1988), Soviet Tajik (1989), Philippines (1991) and Iran (1991). He is the author of the book "Fundamentals of Soil Dynamics" (1974) and the textbook "Soil Mechanics" (1988) both in Japanese. He recently published from Oxford Press an English book entitled "Soil Behaviour in Earthquake Geotechnics"

He has received the honor by being assigned on many occasions to deliver lectures worldwide including the theme lecture in the 11th ICSMFE in San Francisco and the 33rd Rankine Lecture of the British Geotechnical Society in 1993. He acted as chairman of the Technical Committee TC4 on Earthquake Geotechnical Engineering in ISSMFE for the two tenures of office from 1985 to 1993. His incessant endeavor in TC4 has led to the periodical holding of the International Conference on Earthquake Geotechnical Engineering of which the first in a series was held in Tokyo in 1995 and the second in Lisbon in 1999. He has also received honor by being awarded the H. B. Seed Gold Medal in 1998 from the American Society of Civil Engineers. For his significant contribution, title of Honorary Doctorate was given to him from Technical University of Bucharest, Romania in 1995 and from Istanbul Technical University, Turkey in 1999. In 2000, he was honored by being bestowed the most prestigious Japan Academy Prize. In 2010, he was elected to Foreign Associate of the United States Academy of Engineering.

In commemoration of his long-time contribution to the profession, the International Conference on Earthquake Geotechnical Engineering held in Istanbul by the efforts of Professors A. Ansal and M. Sakr, published two volumes of selected papers containing major publications by Prof. Kenji Ishihara.

--

Jorge F. Meneses, PhD, PE, GE, [D.GE](#), F.ASCE

---

## ***CALL FOR ARTICLES***

---

SDAG invites members to submit articles on their current research or an interesting project they are working on for publication in the monthly newsletter. The article should be no more than 1 page in length. Photos are welcomed; too. Please submit articles to the SDAG secretary via email.



---

## ***SDAG RESEARCH TOOL***

---

**SDAG RESEARCH TOOL** - A comprehensive listing of all papers published by SDAG, whether as annual field trip guidebooks or special publications, is now available on our website. Entries are sorted by primary author, or chronologically by date of publication, from our first guidebook in 1972, up the San Luis Rey River in 2013, from Coast to Cactus in 2014, and finally over the edge to the Coyote Mountains in 2015. These can be accessed or downloaded as .pdf files. They are fully searchable in Adobe Reader or Acrobat, so if you are researching a topic, "tsunami" for example, you can search for that keyword. This listing will be updated as new books are published. Thanks to Greg Peterson and Hargis + Associates, Inc., for making this possible. See the links below:

[http://www.sandiegogeologists.org/SDAG\\_Pubs\\_authors.pdf](http://www.sandiegogeologists.org/SDAG_Pubs_authors.pdf)

[http://www.sandiegogeologists.org/SDAG\\_Pubs\\_chronological.pdf](http://www.sandiegogeologists.org/SDAG_Pubs_chronological.pdf)

---

## ***REQUEST for 2016 SDAG/SDGS and PUBLICATION SPONSORS***

---

On behalf of the San Diego Geological Society, Inc. (SDGS), a public benefit 501(c)3 nonprofit educational corporation, we would like to request tax deductible Donations for our San Diego Association of Geologists (SDAG) group. The list of paid Sponsors and the forms to become a Sponsor are located on the SDAG web site at: <http://www.sandiegogeologists.org/Sponsors.html>.

Your donation will further the SDGS mission to promote geology and related fields in the greater San Diego region, operating through the San Diego Association of Geologists (SDAG), a committee of SDGS. To achieve our primary educational objective, we organize frequent field trips and maintain a program of monthly meetings featuring speakers on current geological topics. We also publish field trip guidebooks and other publications related to geology and natural history. We encourage scholarship and research by awarding scholarships from the elementary through graduate levels. With your \$100 "EMERALD" donation, your name/business will be listed as a sponsor on the SDAG web site (<http://www.sandiegogeologists.org/>) and in the monthly SDAG meeting newsletters. With your \$500 "RUBY" or \$1,000 or more "DIAMOND" level donation, your business card will also be included on the SDAG web site and in the monthly SDAG meeting newsletters. In addition, as a "\$1,000 or more DIAMOND" level donation you will be presented with a thank you plaque.

Should you have any questions regarding a Sponsorship, please contact our non-profit SDGS Secretary (Diane Murbach) at 619-865-4333.



HARGIS+ASSOCIATES, INC.  
HYDROGEOLOGY • ENGINEERING

Hargis + Associates, Inc. is an environmental consulting firm specializing in hydrogeology and engineering. We are headquartered in San Diego, California and have offices in Mesa and Tucson, Arizona. Our practice areas include all aspects of hydrogeology and engineering.

As a client service organization, we pride ourselves in being attentive and efficient in meeting our client's needs and solving their problems. In addition to our technical expertise, communication and responsive coordination are hallmarks of our reputation.

We invite you to explore our website to learn more about our firm and the services we provide. We welcome the opportunity to discuss our consulting expertise directly with you.

Contact: **Dr. David R. Hargis**



## Mobile Geochemistry Inc.

H&P Mobile Geochemistry is an industry-leading provider of environmental lab services. With ten mobile labs and five direct push sampling trucks and unparalleled experience, H&P's repertoire of environmental lab services includes many forms of environmental lab sampling techniques all the way to on site field analysis services. H&P has successfully and accurately performed environmental lab services delivering quality results to our clients for over 16 years.

2470 Impala Dr., Carlsbad, CA 92010  
(800) 834-9888

Contact: **Louise Adams or Suzie Nawikas**



TETRA TECH

complex world | CLEAR SOLUTIONS™

Tetra Tech is a leading provider of consulting, engineering, and technical services worldwide. We are a diverse company, including individuals with expertise in science, research, engineering, construction, and information technology. Our strength is in collectively providing integrated services—delivering the best solutions to meet our clients' needs. <http://www.tetrattech.com>

Contact: **Dave Bloom**



Contact: **Rupert Adams, CEG**

**Geocon Incorporated**  
6960 Flanders Drive, San Diego, CA 92121  
P | 858.558.6900

[www.geoconinc.com](http://www.geoconinc.com) / [Facebook](#) / [Linkedin](#)

*San Diego / Riverside County / Palm Desert / Los Angeles /*

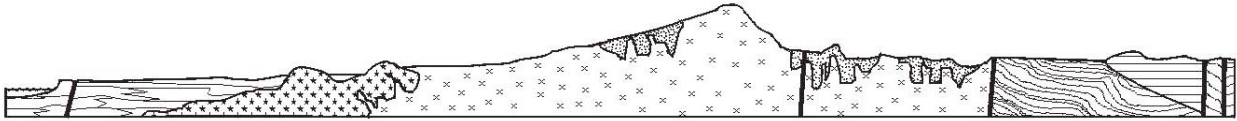
*Orange County / Bakersfield / Bay Area / Fairfield / Sacramento*

- [Dr. Anne Sturz](#)
- Cari Gomes
- Carole L. Ziegler
- Carolyn Glockhoff  
– [Caro-Lion Enterprises](#)
- [Damon DeYoung/Battelle](#)
- David and Jan Steller
- Gerald Shiller
- Greg Cranham  
– Consulting Geologist
- James R. Ashby  
– Mission Geoscience, Inc.
- Jennifer Morton  
– [Terramar Environmental](#)
- Joe Coronas
- [John Minch](#)
- [Leighton Group](#)
- Les Reed  
– [Geotechnical Exploration Inc.](#)
- Lowell A. Lindsay and Diana Lindsay  
– [Sunbelt Publications/AESE](#)

- Dr. Margaret Eggers, CHG  
– Eggers Environmental, Inc.
- Mary Walke
- Marty and Sherry Bloom  
– [mbloom@san.rr.com](mailto:mbloom@san.rr.com)
- [Dr. Monte Marshall](#)  
– SDSU Prof. of Geology/Geophysics, Emeritus
- Monte and Diane Murbach  
– [Murbach Geotech](#)
- [Dr. Pat Abbott](#)  
– SDSU Prof. of Geology, Emeritus
- [Property Matrix – Property Management Software](#)
- Phil Farquharson  
– [CG-Squared Productions](#)
- Rob Hawk
- Rothman Creative  
– (Fritz Rothman 619-278-1771)
- Scott Snyder  
– [SnyderGeologic](#)
- Tom Lamb

**Add yourself to this list** - Sponsors, Corporate Sponsors, and Patrons provide a significant portion of SDGS's and SDAG's operating and scholarship budgets. SDGS is a 501(c)3 public benefit nonprofit educational corporation. For more information, please see our Sponsorship Form.





# SAN DIEGO ASSOCIATION OF GEOLOGISTS

[www.sandiegoeologists.org](http://www.sandiegoeologists.org)

## 2017 MEMBERSHIP FORM

NAME: \_\_\_\_\_ DATE: \_\_\_\_\_

Please type or print clearly.

Home Address: \_\_\_\_\_

\_\_\_\_\_

\_\_\_\_\_

Work Address: \_\_\_\_\_

\_\_\_\_\_

\_\_\_\_\_

*Please include company, university or other affiliation*

Home E-mail Address: \_\_\_\_\_

Work E-mail Address: \_\_\_\_\_

**NOTE:** Your membership dues include delivery of the monthly SDAG newsletter and announcements to the email addresses given.

Phone: Home: \_\_\_\_\_ Work: \_\_\_\_\_ Cell: \_\_\_\_\_

Website: \_\_\_\_\_

Are you willing to serve as an **officer**? \_\_\_\_\_ Are you willing to volunteer as a **guest speaker**? \_\_\_\_\_

Field(s) of Interest: \_\_\_\_\_

Dues: \_\_\_\_\_ Student Member (email delivery only) \$ 5.00

(check choice) \_\_\_\_\_ Regular Member (email delivery only) \$ 25.00

\_\_\_\_\_ Donation Student Scholarships \$ \_\_\_\_\_

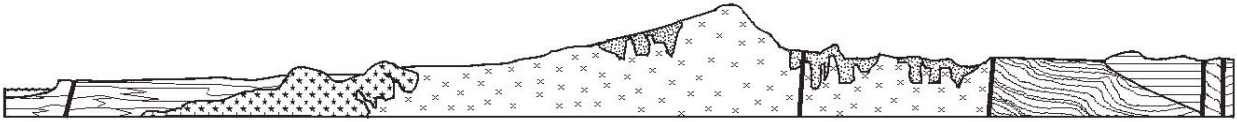
New/Returning Member  Continuing Member

Please enclose a check payable to SDAG, and mail to:

San Diego Association of Geologists (SDAG)

3130 N Evergreen Street

San Diego, CA 92110



**SAN DIEGO ASSOCIATION OF GEOLOGISTS  
2017 SPONSORSHIP FORM**

**NAME:** \_\_\_\_\_ **DATE:** \_\_\_\_\_  
(as you would like it to appear in Newsletter, Website, and Guidebook)

Please type or print clearly, and check  preferred mailing address below.

**Residential Address:** \_\_\_\_\_  
\_\_\_\_\_

**Office/School Address:** \_\_\_\_\_  
\_\_\_\_\_  
\_\_\_\_\_

**Website:** \_\_\_\_\_

**Home E-mail Address:** \_\_\_\_\_

**Work E-mail Address:** \_\_\_\_\_

*NOTE: Your Sponsorship includes a complimentary SDAG membership, and delivery of the monthly SDAG newsletter and announcements to the email addresses given.*

**Phone:** Home: \_\_\_\_\_ Work: \_\_\_\_\_ Cell: \_\_\_\_\_

**Donation Level and Consideration:**

**EMERALD \$100.00** (In addition to monthly recognition for your contribution, you are entitled to a free Internet "link" from SDAG Website. We also list all Sponsors in any publications printed this year)

**RUBY \$500.00** (In addition to the above, you are entitled to an image of your business card in the monthly newsletter and SDAG Website)

**DIAMOND \$1,000.00** (In addition to the above, you will receive a commemorative plaque in recognition for your most generous support of the organization)

New Member / Donor  Continuing Member  Change of mailing address:

Are you interested to serve as an officer? \_\_\_\_\_ Willing to volunteer as a guest speaker? \_\_\_\_\_

**Please make check payable to San Diego Geological Society, Inc., a 501(c)3 public benefit nonprofit educational corporation (in order to claim a tax deduction), and mail to:**

San Diego Geological Society, Inc.  
3130 North Evergreen St.  
San Diego, California 92110 **Thank you!**

*Donations may also be made  
at monthly meetings.*

*Revised 12/01/2016*