

# SAN DIEGO ASSOCIATION OF GEOLOGISTS

[www.sandiegogeologists.org](http://www.sandiegogeologists.org)

---

## *SDAG MEETING ANNOUNCEMENT*

### *Joint Meeting with SOUTH COAST GEOLOGICAL SOCIETY*

---

**WEDNESDAY, June 8, 2016**

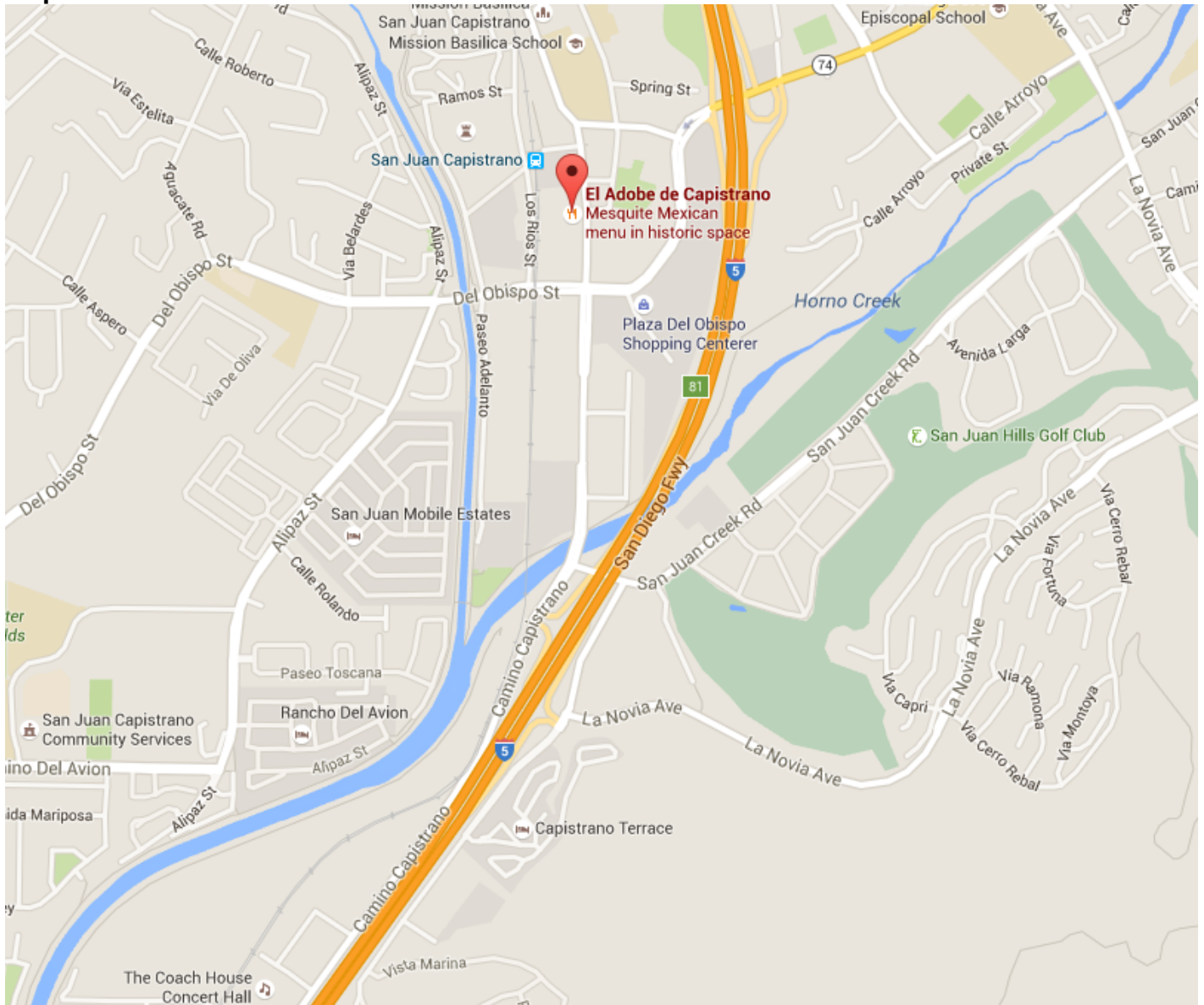
### The March 22, 2014, Oso Landslide: An Overview of the Geotechnical Extreme Events Reconnaissance (GEER) Response

*Presented by:*  
**Jeff Keaton**

- Where:** El Adobe Restaurant **See map on next page**  
31891 Camino Capistrano, San Juan Capistrano, CA 92675  
(See Map)
- When:** 6:00 pm - Social Hour  
7:00 pm - Dinner  
8:00 pm - Program
- Directions:** FROM INTERSTATE 5: Take the CAMINO CAPISTRANO exit and turn left onto VALLE ROAD. Take the next left onto SAN JUAN CREEK ROAD and then the next right onto CAMINO CAPISTRANO. The restaurant is half a mile up on the left hand side.
- Dinner:** **Chips, Salsa, Chicken Enchilada, Chile Relleno, Beef Taco, Spanish Rice Refried Beans, and Dessert with Cash Bar**
- Cost:** \$35 per person, \$5 discount for members, STUDENTS and PROFESSORS: \$15.  
Add \$5 if you did not make a reservation.

**Reservations:** Make your reservation online at [www.sandiegogeologists.org](http://www.sandiegogeologists.org) no later than noon, **Monday June 6th**. Reservations cannot be guaranteed after Monday at noon; but are always preferred over walk ins. Reservations well before the deadline are MUCH appreciated.

**Map:**



## **ABSTRACT AND BIO**

### **The March 22, 2014, Oso Landslide: An Overview of the Geotechnical Extreme Events Reconnaissance (GEER) Response**

*Presented by: **Jeff Keaton***

The Oso Landslide in Snohomish County, Washington, is among the most significant geologic disasters in recent U. S. history. The landslide occurred on a valley slope with documented history of intermittent landslide movement dating back to the 1940s; the most recent slope movement in 2006 blocked the North Fork of the Stillaguamish River and caused shallow flood damage to some of the nearby homes. The Oso Landslide is one of many landslides that have occurred on valley slopes above the North Fork of the Stillaguamish River.

The 22 March 2014 Oso Landslide generated vibrations at 10:37 A.M. local time that were recorded on nearby seismograph stations; it became a rapidly moving, unchannelized debris flow that spread out as it travelled about 1 km across the valley, damming the North Fork of the Stillaguamish River, destroying and carrying away about 50 homes, taking the lives of 43 people, and burying about 1.5 km of State Highway 530.

Developing and advancing strategies for adapting to weather-triggered earth surface processes requires an understanding of what lead to the collapse of the slope for enhanced public safety and so that communities and infrastructure systems can be designed for greater resiliency. The National Science Foundation-supported Geotechnical Extreme Events Reconnaissance (GEER) Association ([www.geerassociation.org](http://www.geerassociation.org)) by 31 March 2014 assembled a team of seven professionals to investigate the landslide; authorization to access the landslide area was granted to the GEER team in May 2014. The primary focus of the GEER team is to document short-lived geotechnical features and make the findings publically available through the GEER website. The team's report will describe plausible precipitation, geologic, groundwater, and geotechnical models, impacts to infrastructure, and hazard-communication aspects of the disastrous landslide event.

The GEER report in Adobe Acrobat format can be downloaded at no cost from the GEER website ([www.geerassociation.org](http://www.geerassociation.org)). A peer-reviewed publication by the authors also is available (Wartman et al., 2016, *Geomorphology* 253, 275–288), as well as articles in *AEG News* (December 2014) and *Geo-Strata* (July 2015).

## **SPEAKER BIO**

Jeffrey R. Keaton specializes in quantifying hazardous natural processes for siting and design of all types of facilities in all geologic environments. He has degrees in Geological Engineering, Engineering (Geotechnical), and Geology. Keaton has been employed by consulting firms for over 45 years, and in Amec Foster Wheeler's Los Angeles office of since July 2005 where he is a Principal Engineering Geologist. He is registered in several states in the USA as an Engineer and as a Geologist; he hold the Envision™ Sustainability Professional (ENV SP) credential from the Institute for Sustainable Infrastructure and is a Diplomate in Geotechnical Engineering of the Academy of Geo-Professionals.

He has remained active in professional societies throughout his career and is a active member and/or serves on a number of different committees or as an officer in organizations such as AEG, GSA, ASCE, and GEER.

---

## ***UPCOMING MEETINGS***

---

Meetings are usually held on the 3rd Wednesday of the month but may change to accommodate the speaker and meeting place schedules. Check the SDAG web site for updates.

NOTE the 2nd Wednesday of the Month for the talks in June and July.

July 13, 2016	Steve Borron - Predicting Slope Failures Using Slope-Monitoring Radar
Aug 17, 2016	Monty Marshall – A Topic TBD that WILL Blow Your Mind
Sep 19, 20 or 21	Peter Gold - Precursor to the SDAG Field Trip – The Agua Blanca Fault

## **2016 SDAG EXECUTIVE COMMITTEE**

**PRESIDENT** - Randy Wagner; Ph: (760) 877-3490 [randallwagner@live.com](mailto:randallwagner@live.com)

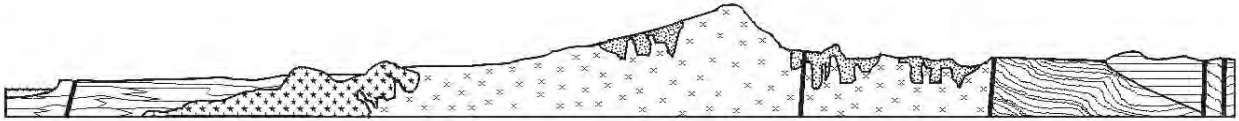
**VICE PRESIDENT** - Rupert Adams, [rsa\\_sdag@geoconinc.com](mailto:rsa_sdag@geoconinc.com)

**SECRETARY** - Chris Livesey, [secretary.sdag@gmail.com](mailto:secretary.sdag@gmail.com)

**TREASURER** - Ken Haase, [kenwhaase@gmail.com](mailto:kenwhaase@gmail.com)

**PUBLICATIONS** – Lowell Lindsay; *Sunbelt Publications*; Ph: (619) 258-4911, x111; fax:(619) 258-4916;  
[llindsay@sunbeltpub.com](mailto:llindsay@sunbeltpub.com)

**WEBMASTER** – Carolyn Glockhoff; *Caro-Lion Enterprises*, Ph: (858) 549-3396; [carolyn@caro-lion.com](mailto:carolyn@caro-lion.com)



# SAN DIEGO ASSOCIATION OF GEOLOGISTS

[www.sandiegogeologists.org](http://www.sandiegogeologists.org)

## 2016 MEMBERSHIP FORM

NAME: \_\_\_\_\_ DATE: \_\_\_\_\_

Please type or print clearly.

Home Address: \_\_\_\_\_

\_\_\_\_\_

\_\_\_\_\_

Work Address: \_\_\_\_\_

\_\_\_\_\_

\_\_\_\_\_

*Please include company, university or other affiliation*

Home E-mail Address: \_\_\_\_\_

Work E-mail Address: \_\_\_\_\_

**NOTE:** Your membership dues include delivery of the monthly SDAG newsletter and announcements to the email addresses given.

Phone: Home: \_\_\_\_\_ Work: \_\_\_\_\_ Cell: \_\_\_\_\_

Website: \_\_\_\_\_

Are you willing to serve as an **officer**? \_\_\_\_\_ Are you willing to volunteer as a **guest speaker**? \_\_\_\_\_

Field(s) of Interest: \_\_\_\_\_

Dues: \_\_\_\_\_ Student Member (email delivery only) \$ 5.00

(check choice) \_\_\_\_\_ Regular Member (email delivery only) \$ 25.00

\_\_\_\_\_ Donation Student Scholarships \$ \_\_\_\_\_

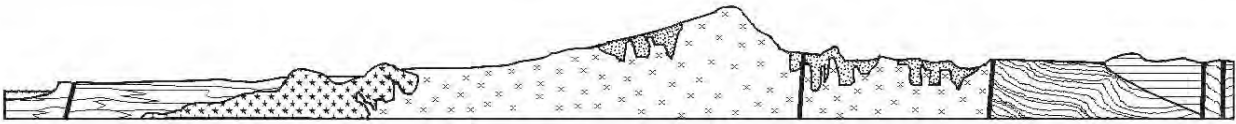
☐ New/Returning Member ☐ Continuing Member

Please enclose a check payable to SDAG, and mail to:

San Diego Association of Geologists (SDAG)

3130 N Evergreen Street

San Diego, CA 92110



## SAN DIEGO ASSOCIATION OF GEOLOGISTS 2016 SPONSORSHIP FORM

NAME: \_\_\_\_\_ DATE: \_\_\_\_\_  
(as you would like it to appear in Newsletter, Website, and Guidebook)

Please type or print clearly, and check ☒ preferred mailing address below.

☐ Residential Address: \_\_\_\_\_  
\_\_\_\_\_

☐ Office/School Address: \_\_\_\_\_  
\_\_\_\_\_  
\_\_\_\_\_

Website: \_\_\_\_\_

Home E-mail Address: \_\_\_\_\_

Work E-mail Address: \_\_\_\_\_

*NOTE: Your Sponsorship includes a complimentary SDAG membership, and delivery of the monthly SDAG newsletter and announcements to the email addresses given.*

Phone: Home: \_\_\_\_\_ Work: \_\_\_\_\_ Cell: \_\_\_\_\_

### Donation Level and Consideration:

☐ **EMERALD \$100.00** (In addition to monthly recognition for your contribution, you are entitled to a free Internet "link" from SDAG Website. We also list all Sponsors in any publications printed this year)

☐ **RUBY \$500.00** (In addition to the above, you are entitled to an image of your business card in the monthly newsletter and SDAG Website)

☐ **DIAMOND \$1,000.00** (In addition to the above, you will receive a commemorative plaque in recognition for your most generous support of the organization)

New Member / Donor ☐ Continuing Member ☐ Change of mailing address: ☐

Are you interested to serve as an officer? \_\_\_\_\_ Willing to volunteer as a guest speaker? \_\_\_\_\_

**Please make check payable to San Diego Geological Society, Inc., a 501(c)3 public benefit nonprofit educational corporation (in order to claim a tax deduction), and mail to:**

San Diego Geological Society, Inc.  
3130 North Evergreen St.  
San Diego, California 92110 **Thank you!**

*Donations may also be made  
at monthly meetings.*

*Revised 11/18/2015*

# 2016 SDAG FIELDTRIP UPDATE:

## GEOHAZARDS OF NORTHERN BAJA CALIFORNIA

### Evaluating the Effects of Geologic Hazards on the Local Landscape

SDAG 2016 Field Trip – October 22<sup>th</sup> through 24<sup>th</sup>

Planning is now well underway on this year's exciting trip to Northern Baja, which will examine features related to faulting, landsliding and other erosional and mass wasting processes, and will assess their effects on the local landscape. We have now expanded this year's trip into **3 days**, beginning on Saturday the 22<sup>nd</sup> of October with an early morning rendezvous and breakfast near the US-Mexico border, before crossing, and touring down the coast to Punta Banda, just south of Ensenada, examining several faults, landslides and geologic exposures along the way. **Day two** will be spent traversing the Agua Blanca fault zone, with the day culminating in examination of a new fault trench excavated in young alluvial fan deposits, before overnighing in the Santo Tomas area. For those that choose to stay for **day three**, we will return to the US, most likely via some of the wineries in the Guadalupe Valley, before crossing the border at Tecate and returning to our starting point to pick up vehicles.

We are very fortunate this year to have the help and guidance of some of the most experienced local geologists in Southern California, including our very own John Minch and Jim Ashby, who have worked extensively in Baja over the last 40 ears. In addition, we have partnered with colleagues and graduate students at CICESE University, several of whom are participating in the fieldtrip and sharing their research. We also have Peter Gold from the University of Austin Texas, who will be presenting his research on the Agua Blanca Fault at our regular September meeting, and attending the fieldtrip as well to share his insights on the fault.

With respect to logistics, arrangements are ongoing, but we would like to highlight the following key points:

- You must have a **valid US passport or valid US permanent resident card** (Green Card) to cross back into the US at the end of the trip
- Transport will most likely be by a combination of bus/coach and private vehicle (SEE BELOW).
- We anticipate having a choice of both camping and hotel rooms at both overnight stops.
- All meals will be provided and we are looking at catering services to provide food at our overnight locations as well as during the day for lunch etc.
- We are planning several modes of transport for the trip. There has been significant interest by members who would like to travel by bus/coach. However, we will also require some 4x4 vehicles to access stops that cannot be reached by bus, or are too far to hike to (SEE BELOW).

With all this in mind we are looking for some feedback from our members to assist in trip planning. If you could answer the following questions and return the completed form to one of the Officers, it would be greatly appreciated!

# 2016 SDAG Field Trip Questionnaire

NAME: \_\_\_\_\_

- 1. Are you planning on attending this year's fieldtrip?**

YES, NO, MAYBE (Circle one)

- 2. If yes, would you prefer to travel on a bus/coach or bring your own car/rent a car or ride in someone else's car?**

BUS, CAR (Circle one)

- 3. We are looking for at least 4 or 5 off-road vehicles to help transport people to locations that cannot be accessed by bus. If you have such a pickup truck or other suitable vehicle, would you be willing to drive it on the trip?**

YES, NO, N/A (Circle one)

- 4. If you plan to attend, would you be more likely to stay for all three days or leave the trip earlier and return to the US separately?**

LEAVE EARLY STAY ALL 3 DAYS (Circle one)

- 5. If you plan to attend, will you bring any family members or friends?**

0, 1, 2, 3, 4 or more (Circle one)

- 6. Will you be needing vegetarian options for food?**

YES, NO (Circle one)

Please e-mail your responses to: [adams@geoconinc.com](mailto:adams@geoconinc.com)



---

## ***ANNOUNCEMENTS***

---

# **CALL FOR PAPERS**

## **GEOHAZARDS OF NORTHERN BAJA CALIFORNIA**

**Evaluating the Effects of Geologic Hazards on the Local Landscape**

**SDAG 2016 Field Trip – October 21<sup>th</sup> through 23<sup>th</sup>**

On this field trip, we will travel south of the US-Mexico border to examine the geomorphic features related to faulting, landsliding and other erosional and mass wasting processes. If possible, we will also examine fault related features on a smaller scale in trench exposures. In addition, depending on the outcome of this year's highly anticipated El Niño, we may be able to examine the effects of the heavy rains on the local landscape. Where possible, we will look at how geotechnical engineering solutions have been employed to stabilize the local landscape.



SDAG seeks new manuscripts based on original work relating to earthquakes, faulting, landsliding, and/or any other geologic hazards that may affect Northern Baja. We also invite authors to submit articles on a broader range of topics including regional geology, structural geology, hydrogeology and groundwater resources.

### **Deadline for Abstracts: Friday, May 20<sup>th</sup>, 2016**

Please submit the following information along with abstracts:

- Title
- Author(s) and affiliation
- Address, email, and telephone numbers for the author(s)

Please submit abstracts by email to Rupert Adams at [adams@geoconinc.com](mailto:adams@geoconinc.com)



---

## ***"ROCK DONATIONS NEEDED:"***

Amy Romano, one of our former student members, is looking for rock donations. Amy is currently attending Humboldt State University and majoring in Geology. She is very involved with Humboldt's Geology Club, and every year the club holds a rock auction to support their activities. If you have any rocks to donate, please contact Amy at [ajr612@humboldt.edu](mailto:ajr612@humboldt.edu).

---

## ***CALL FOR ARTICLES***

---

SDAG invites members to submit articles on their current research or an interesting project they are working on for publication in the monthly newsletter. The article should be no more than 1 page in length. Photos are welcomed; too. Please submit articles to the SDAG secretary via email.

---

## ***SDAG RESEARCH TOOL***

---

**SDAG RESEARCH TOOL** - A comprehensive listing of all papers published by SDAG, whether as annual field trip guidebooks or special publications, is now available on our website. Entries are sorted by primary author, or chronologically by date of publication, from our first guidebook in 1972, up the San Luis Rey River in 2013, from Coast to Cactus in 2014, and finally over the edge to the Coyote Mountains in 2015. These can be accessed or downloaded as .pdf files. They are fully searchable in Adobe Reader or Acrobat, so if you are researching a topic, "tsunami" for example, you can search for that keyword. This listing will be updated as new books are published. Thanks to Greg Peterson and Hargis + Associates, Inc., for making this possible. See the links below:

[http://www.sandiegogeologists.org/SDAG\\_Pubs\\_authors.pdf](http://www.sandiegogeologists.org/SDAG_Pubs_authors.pdf)

[http://www.sandiegogeologists.org/SDAG\\_Pubs\\_chronological.pdf](http://www.sandiegogeologists.org/SDAG_Pubs_chronological.pdf)

---



# THE GEOLOGICAL SOCIETY OF AMERICA®

The 2016 GSA Annual Meeting will be September 25 - 28, 2016  
in Denver, Colorado

---

The SIPES (Society of Independent Professional Earth Scientists) is planning their annual conference in San Diego on August 1-4, 2016 at the Omni Resort and are looking for people to give presentations and for potential field trip stops that represent the local geology of any type, so the scope of the presentations and field trip is fairly open. The SIPES is a national group, consisting mostly of independent geoscientists. Their website is <https://sipes.org>. Speaker presentations will take place on August 2 & 3 and the field trip is set for the 4th. Any person giving a presentation receives free registration to attend all functions, and can join the networking group for free. The presentations should be approximately 25 minutes in length and have a PowerPoint presentation, if possible. They find the applicability and interest in most geological and geophysical parameters to be appropriate for the conference. However, diversity is greatly sought as well.

They are also looking for a Foundation Speaker to give a 2-hour talk on the local geology (or some aspect of it) and will provide a \$1,000 donation or payment for the Foundation Speaker.

If you are interested in giving a talk, attending the conference or have any questions you can contact Kirk Kolar at [kckoil100@gmail.com](mailto:kckoil100@gmail.com). If you have a presentation you'd like to give please submit a short abstract and a very brief bio to be listed in the conference brochure to Kirk.

---

---

## ***GEOLOGY JOB OPPORTUNITIES***

---

### **Crux Subsurface, Inc.**

From our past president Brian J. Olson, Quanta Subsurface, a brand new Quanta Services Company has hatched, and is looking for senior staff to project level (nearly registered to registered) geologists. For more information visit:

[https://www.appone.com/MainInfoReq.asp?R\\_ID=1226572&B\\_ID=83&fid=1&Adid=0&ssbgcolor=5B5](https://www.appone.com/MainInfoReq.asp?R_ID=1226572&B_ID=83&fid=1&Adid=0&ssbgcolor=5B5)

Brian says "it is an excellent opportunity to practice field geology throughout Southern California as well as internationally, as we have numerous large contracts setting up for this young but well established geotechnical engineering company. Feel free to email me at [bolson@cruxeg.com](mailto:bolson@cruxeg.com) if you have any questions."

---

### ***Geology Institutions***

---

**We have heard from many upcoming geologists at our recent meetings, all of whom are seeking work opportunities here in San Diego. Included herein, in no particular order, are bio's and contact information of our members looking to gain a foothold in the local professional community**

**Maxwell Clayton Utter**

| [mu47@nau.edu](mailto:mu47@nau.edu) | cell: 858-663-9580|

#### **Education**

Education Level: Undergraduate Student 80 Credit Hours

Education Institution: Northern Arizona University

Majors: Environmental Sciences and Geology

College GPA: 3.46

SAT Score: 1850 690 Math, 630 Critical Reading, 520 Writing

#### **Academic and Related Awards**

Northern Arizona University

- Northern Arizona University Dean's List 2013, 2014, 2015
- Delta Epsilon Iota Honor Society Member Nov 2014
- National Society of Leadership and Success Member Oct 2014
- National Society of Collegiate Scholars Member  
"For exemplary academic performance" May 2014
- Cardinal Key Honor Society Nominee Aug 2014
- Blue Key Honor Society Nominee Nov 2014

#### Del Norte High School

- Nighthawk Scholar  
"For achieving a GPA of 4.0 or greater" 2012, 2013
- Principals Honor List  
"For achieving a GPA of 3.75 or greater" 2012
- Del Norte High School Certificate of Merit  
"For exceptional merit in academics" Mar 2011
- Mensa Member Oct 2010

#### Oak Valley Middle School

- Science Olympiad 1st Place in Meteorology San Diego County Feb 2009
- Science Olympiad 3rd place in Meteorology State of California Apr 2009

#### Leadership

- Northern Arizona University Geology Club President 2014-present
- Delta Epsilon Iota Honor Society Treasurer Jan 2015-Aug 2015

#### Work Experience

- Northern Arizona University REDD+ Research Assistant Dec 2014- Mar 2015
- Teaching Assistant Northern Arizona University Chemistry 151 Aug 2014- Dec 2014
- Teaching Assistant Black Mountain Academy Aug 2014
- Habitat Restoration: San Diego Botanical Gardens Jun 2014- Aug 2014
- Landscaper Jun 2008 to Aug 2013

#### Volunteer Service

- Water Sampling Studies For Reintroduction of Native Species Jan 2010- Jun 2015
- Stone Ranch Elementary Science Fair Judge Feb 2011, Feb 2012
- Boy Scout Beach Cleanup Aug 2012
- 4S Ranch Autism Walk Founder Jan 2008- May 2013

- |  |                    |
|--|--------------------|
| Raised over \$10,000 for children with Autism      |                    |
| • Best Buddies- Event organizer                    | Aug 2009- May 2013 |
| • Facilitator- Special Education Basketball League | Jan 2013- Jan 2015 |
| • Bread of Life Homeless Facility Oceanside CA     | Aug 2011           |
| • Home of Guiding Hands Building Renovation        | Jan 2011           |
| • UCSD Brain Function Study                        | Jan 2009           |

#### Extra-curricular Awards

- |  |          |
|--|----------|
| • Autism Society of America Autism Angel Award             | Jan 2013 |
| “For extraordinary service to the special needs community” |          |

---

This is Farida Baxamusa, MS- Earth Science from Scripps Institution Of Oceanography (SIO), University of California, San Diego (UCSD). I am originally from India, and have another Master's in Earth Sciences from St. Xavier's College, University of Mumbai, India. I have also been granted the Dr. Ratan Nadirshaw Sureshwala and Dr. Dayanand Dattatraya Yellur scholarship for securing highest rank in Earth Science at MS Part I and Part II. After completing my MS in India, I secured an internship at Oil and Natural Gas Corporation (ONGC), Mumbai, India. Later I worked as an Earth Science lecturer at St. Xavier's College, University of Mumbai, India where I held classes, directed discussions among large groups ranging from 35 to 80 students on mineralogy, petrology, geochemistry, crystallography, economic geology, oceanography, and plate tectonics and led lab courses involving mapping, stratigraphy, and paleontology. In September of 2013, I was accepted at SIO, UCSD for a master's program. Dr. Lisa Tauxe was my advisor and I worked as a research assistant under her in the field of paleomagnetism. I worked in the paleomagnetism laboratory where I skillfully selected quenched rock materials from lava flow samples to obtain accurate estimates of the Earth's magnetic field intensities. I developed python scripts to analyze individual samples to obtain their paleointensity values. I also worked as a teaching assistant for a year where I assisted teaching undergraduates introductory geology and Earth processes, collaborated with other teaching assistants and professors to aid in conducting an introductory course about hydrologic processes on Earth and held office hours, tutored students, proctored and graded exams. Around the time of completion of my degree I presented my year's research to the faculty members of the Geoscience Research Division (GRD) and qualified for my MS in Earth Science and graduated in September of 2014. I am currently doing 3 part time jobs, one as a Staff Research Associate at SIO, the other as a Staff scientist at the Bodhi Group where I perform phase I site assessments, and the third as a geology education website volunteer at California Coastal Commission Public Education Department, CA. I am now actively looking for a job in environmental consultancy firms or educational institutions. I believe that I have a varied background and education and the perseverance and grit in achieving excellence in everything I do. If you have any advice, jobs, internships please feel free to contact me at fbaxamus@ucsd.edu or call me on 858-397-8456. Your help and guidance will be highly appreciated.

---

## ***REQUEST for 2016 SDAG/SDGS and PUBLICATION SPONSORS***

---

On behalf of the San Diego Geological Society, Inc. (SDGS), a public benefit 501(c)3 nonprofit educational corporation, we would like to request tax deductible Donations for our San Diego Association of Geologists (SDAG) group. The list of paid Sponsors and the forms to become a Sponsor are located on the SDAG web site at: <http://www.sandiegogeologists.org/Sponsors.html>.

Your donation will further the SDGS mission to promote geology and related fields in the greater San Diego region, operating through the San Diego Association of Geologists (SDAG), a committee of SDGS. To achieve our primary educational objective, we organize frequent field trips and maintain a program of monthly meetings featuring speakers on current geological topics. We also publish field trip guidebooks and other publications related to geology and natural history. We encourage scholarship and research by awarding scholarships from the elementary through graduate levels. With your \$100 "EMERALD" donation, your name/business will be listed as a sponsor on the SDAG web site (<http://www.sandiegogeologists.org/>) and in the monthly SDAG meeting newsletters. With your \$500 "RUBY" or \$1,000 or more "DIAMOND" level donation, your business card will also be included on the SDAG web site and in the monthly SDAG meeting newsletters. In addition, as a "\$1,000 or more DIAMOND" level donation you will be presented with a thank you plaque.

Should you have any questions regarding a Sponsorship, please contact our non-profit SDGS Secretary (Diane Murbach) at 619-865-4333.





**HARGIS+ASSOCIATES, INC.**  
HYDROGEOLOGY • ENGINEERING

Hargis + Associates, Inc. is an environmental consulting firm specializing in hydrogeology and engineering. We are headquartered in San Diego, California and have offices in Mesa and Tucson, Arizona. Our practice areas include all aspects of hydrogeology and engineering.

As a client service organization, we pride ourselves in being attentive and efficient in meeting our client's needs and solving their problems. In addition to our technical expertise, communication and responsive coordination are hallmarks of our reputation.

We invite you to explore our website to learn more about our firm and the services we provide. We welcome the opportunity to discuss our consulting expertise directly with you.

*Contact: Dr. David R. Hargis*



# Mobile Geochemistry Inc.

H&P Mobile Geochemistry is an industry-leading provider of environmental lab services. With ten mobile labs and five direct push sampling trucks and unparalleled experience, H&P's repertoire of environmental lab services includes many forms of environmental lab sampling techniques all the way to on site field analysis services. H&P has successfully and accurately performed environmental lab services delivering quality results to our clients for over 16 years.

2470 Impala Dr., Carlsbad, CA 92010  
(800) 834-9888

*Contact: Louise Adams or Suzie Nawikas*



**TETRA TECH**

complex world | **CLEAR SOLUTIONS™**

Tetra Tech is a leading provider of consulting, engineering, and technical services worldwide. We are a diverse company, including individuals with expertise in science, research, engineering, construction, and information technology. Our strength is in collectively providing integrated services—delivering the best solutions to meet our clients' needs. <http://www.tetrattech.com>

*Contact: Dave Bloom*



*Contact: Rupert Adams, CEG*

**Geocon Incorporated**  
6960 Flanders Drive, San Diego, CA 92121  
P | 858.558.6900

[www.geoconinc.com](http://www.geoconinc.com) / [Facebook](#) / [LinkedIn](#)

*San Diego / Riverside County / Palm Desert / Los Angeles /*

*Orange County / Bakersfield / Bay Area / Fairfield / Sacramento*





**Contact: Brian Olson**

<http://www.cruxsub.com/>  
[Crux Subsurface, Inc](#)

- [Dr. Pat Abbott](#) - SDSU Prof. of Geology, Emeritus
- Marty and Sherry Bloom – mbloom@san.rr.com
- Curtis Burdett
- Joe Corones - [City of San Diego](#)
- Greg Cranham - Consulting Geologist
- Dr. Margaret Eggers, CHG – Eggers Environmental, Inc.
- Phil Farquharson - [CG-Squared Productions](#)

- Carolyn Glockhoff - [Caro-Lion Enterprises](#)
- Cari Gomes
- Rob Hawk
- Leighton Group - <http://www.leightongroup.com>
- Lowell A. Lindsay and Diana Lindsay - [Sunbelt Publications/AESE](#)
- [Dr. Monte Marshall](#) - SDSU Prof. of Geology and Geophysics, Emeritus
- [John Minch](#)
- James R. Ashby/Mission Geoscience, Inc.
- Monte and Diane Murbach - [Murbach Geotech](#)

- Jennifer Morton – [Terramar Environmental](#)
- [Property Matrix – Property Management Software](#)
- Les Reed – [Geotechnical Exploration Inc.](#)
- Gerald Shiller
- Scott Snyder - [SnyderGeologic](#)
- [Southwest Geophysics, Inc.](#)
- David and Jan Steller
- [Dr. Anne Sturz](#)
- Mary Walke
- Carole L. Ziegler

**Add yourself to this list** - Sponsors, Corporate Sponsors, and Patrons provide a significant portion of SDGS's and SDAG's operating and scholarship budgets. SDGS is a 501(c)3 public benefit nonprofit educational corporation. For more information, please see our Sponsorship Form.

~~~~~