

# SAN DIEGO ASSOCIATION OF GEOLOGISTS

[www.sandiegogeologists.org](http://www.sandiegogeologists.org)

## SDAG MEETING ANNOUNCEMENT

**WEDNESDAY, December 17, 2014**

**The recovery of late Oligocene vertebrate fossils in south Carlsbad: Implications for the geologic history of Paleogene strata in northern San Diego County.**

*Presented by:*

**Dr. Tom Deméré**

Department of Paleontology, San Diego Natural History Museum

**Where:** **San Diego Natural History Museum**

1788 El Prado, San Diego, 92101

**When:** 6:00 pm - Social Hour

7:00 pm - Dinner

8:00 pm - Program

**Dinner:** Deluxe Mexican Buffet. Cash bar

**Cost:** \$40 per person, \$5 discount for members, STUDENTS: \$25. Add \$5 if you did not make a reservation. Includes one complimentary drink ticket.



**Reservations:** Make your reservation online at [www.sandiegogeologists.org](http://www.sandiegogeologists.org) **no later than noon, Monday, December 15th**. Reservations cannot be guaranteed after Monday at 12 noon; but are always preferred over walk ins. Reservations well before the deadline are MUCH appreciated.

## **ABSTRACT**

Paleogene strata exposed along the coastal plain of northern San Diego County have traditionally been assigned to either the La Jolla Group or the Santiago Formation, both typically considered to be of Eocene age. However, since 1994 paleontological evidence has emerged that clearly demonstrates the occurrence of Oligocene fossils in portions of this Paleogene stratigraphic sequence. These fossils have primarily been recovered from temporary exposures at a variety of residential and roadway construction project sites in Oceanside. Additional fossils have been recovered from sea cliff exposures in Carlsbad, and include well-preserved skulls and jaws of the diminutive oreodont, *Sespia californica*. This distinctive vertebrate fossil is also known from the Otay Formation in Chula Vista and represents an index fossil of the Early Arikarean North American Land Mammal Age (Late Oligocene, ~28-30 Ma). As its generic name implies, *Sespia californica* also occurs in the Oligocene portion of the Sespe Formation in Ventura County. Stratigraphically, the sedimentary rocks containing Oligocene fossils in Oceanside lie above strata containing middle and upper Eocene vertebrate fossils and below strata of the middle Miocene San Onofre Breccia. The general strike of these Paleogene and Neogene beds is N-S, with a homoclinal westerly dip that in some areas reaches 20 degrees. The overall stratigraphic sequence closely resembles middle Paleogene and Neogene sequence in southern Orange County, where Eocene strata mapped as the Santiago Formation are overlain by Oligocene strata that are mapped as Sespe-Vaqueros Undifferentiated, which in turn are overlain by middle Miocene Strata mapped as San Onofre Breccia.

## **SPEAKER BIO**

### **Thomas A. Deméré, Ph.D.**

Tom attended San Diego State University (BS Geology), USC (MS Geology) and UCLA (Ph.D. Biology). After an initial period working in the petroleum industry, Tom moved to the San Diego Natural History Museum where he has been employed since 1979. He is currently Curator of the Department of Paleontology, where he occupies the Joshua L. Baily, Jr. Chair of Paleontology. Tom's research interests are in Cenozoic paleontology and geology of Southern California and Baja California. His invertebrate paleontological work has concentrated on Plio-Pleistocene molluscan biostratigraphy, paleoecology, and taphonomy. His vertebrate paleontological work focuses on the evolutionary history of marine mammals (pinnipeds and cetaceans). In pursuing this line of research Tom is involved with field investigations to discover new fossils of pinnipeds and cetaceans, with anatomical investigations of both fossil and Recent marine mammals, and with functional analysis of feeding and locomotor anatomical features.

Since the early 1980s, Tom has been deeply involved with conservation of the rich and unique paleontological resources of Southern California. In this regard, he has helped put together guidelines for determining the paleontological resource sensitivity of geological deposits that occur in the region. Tom has also headed up the Museum's Department of PaleoServices, whose goal it is to mitigate negative construction-related impacts to sensitive paleontological resources. Typically, mitigation involves monitoring of construction activities, discovery and salvaged of unearched fossil remains, preparation of salvaged fossils, identification and curation of prepared fossils, and storage of curated fossils in perpetuity for future generations. Over the past 33 years this effort has resulted in the recovery of countless rare and/or unique fossil remains, many of which are, or have been, displayed for the public at the Museum.

As an adjunct faculty at nearby SDSU in both the Department of Geological Sciences and Department of Biology, Tom has had the opportunity to advise a number of undergraduate and graduate students on various paleontological projects. Tom's involvement with students increased in 2009 when he began teaching courses (Geobiology and Historical Geology) in the Department of Geological Sciences, where he was an undergraduate student in the 1970s.

---

## **SDAG MEETING SCHEDULE**

Meetings are usually held on the 3rd Wednesday of the month but may change to accommodate the speaker and meeting place schedules. Check the SDAG web site for updates.

January 21, 2015	<b>Renee Deutsch</b> – The Impossible Landslide (Carrizo Gorge's 1932 Goat Canyon Disaster)
February 18, 2015	<b>Chuck Houser</b> - Calcite
March 2015	

---

## **2014 SDAG EXECUTIVE COMMITTEE**

**PRESIDENT** – Brian J. Olson; *FSR Engineering*; Ph: (858) 750-9243; [bolson@fsrengineering.com](mailto:bolson@fsrengineering.com)

**VICE PRESIDENT** – Jennifer Bauer Morton; [geologyjen@yahoo.com](mailto:geologyjen@yahoo.com)

**TREASURER** – Lee Vanderhurst; Ph: (858) 531-7729; [lee@leev-geology.com](mailto:lee@leev-geology.com)

**SECRETARY** – Randy Wagner; Ph: (760) 877-3490 [randallwagner@live.com](mailto:randallwagner@live.com)

**PUBLICATIONS** – Lowell Lindsay; *Sunbelt Publications*; Ph: (619) 258-4911, x111; fax:(619) 258-4916; [llindsay@sunbeltpub.com](mailto:llindsay@sunbeltpub.com)

**WEBMASTER** – Carolyn Glockhoff; *Caro-Lion Enterprises*, Ph: (858) 549-3396; [carolyn@caro-lion.com](mailto:carolyn@caro-lion.com)

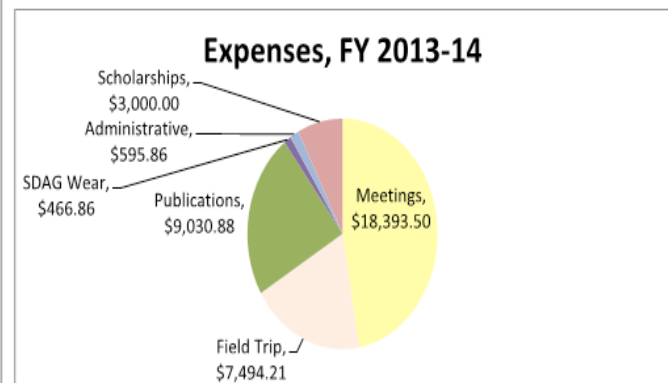
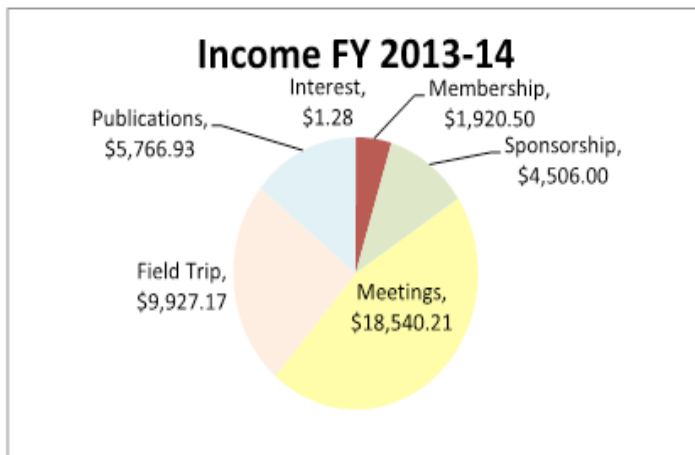
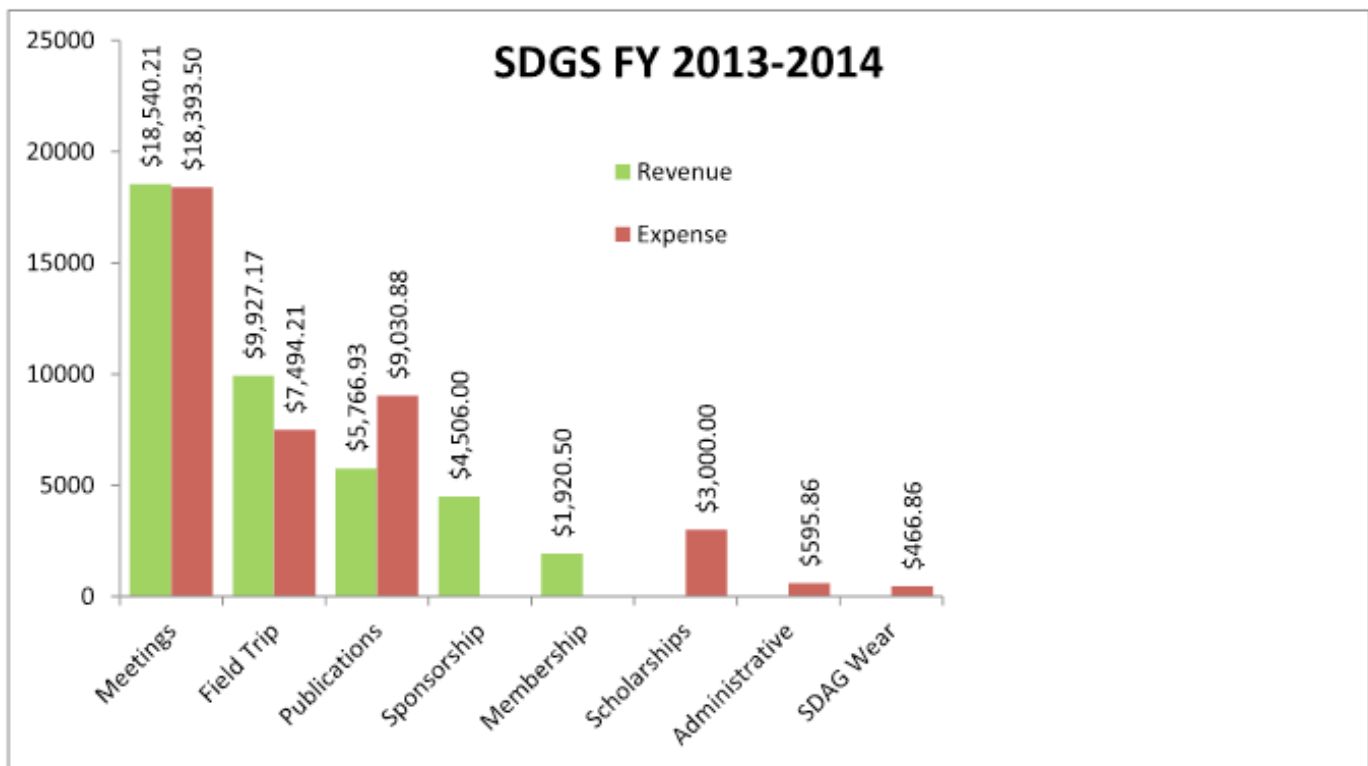
---

## **SDGS ANNUAL REPORT**

The most recent San Diego Geological Society Fiscal Year (FY) ran from July 1, 2013 to June 30, 2014. Our largest program is SDAG, which operates monthly meetings, and annual weekend field trip, and short “one-stop wonder” field trips. We also keep a backlist of previously published field trip guidebooks and other books in print, and provide student scholarships to community college, undergraduates, and graduate students who show promise as geological researchers. Our notable operational achievements this year were:

- 12 monthly SDAG dinner meetings each featuring a technical lecture
- A field trip to the San Luis Rey River watershed, led by Brian Olson
- A OSW to the Rose Canyon fault at La Jolla Shores
- \$3,000 of scholarships to three worthy students
- Publication of two new field trip guidebooks: San Luis Rey on Display and Palms to Pines

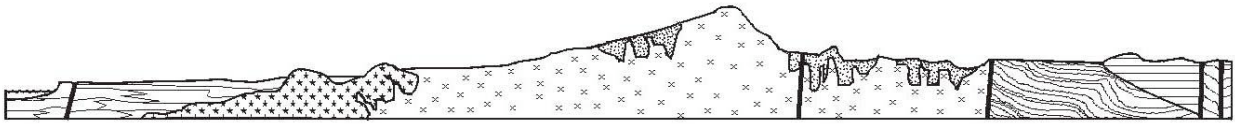
Our corporate treasury has been in good shape in no small part because of the careful diligence of our corporate treasurer. Our total year revenues were \$40,661 and total expenses were \$34,919. Our total cash assets this year ended with \$16,974.



Dave Bloom  
SDGS president

## **2015 SDAG MEMBERSHIP**

It's that time of the year to renew your membership. The regular membership is \$25 (only \$5 for students) while the sponsor membership starts at \$100. Both forms are included on the following pages or they can be found on the home page of the SDAG website. [Or copies will be available at the December meeting so you can fill out the fill and pay your dues at the same time.](#)



# SAN DIEGO ASSOCIATION OF GEOLOGISTS

[www.sandiegoeologists.org](http://www.sandiegoeologists.org)

## 2015 MEMBERSHIP FORM

NAME: \_\_\_\_\_ DATE: \_\_\_\_\_

Please type or print clearly.

Home Address: \_\_\_\_\_

\_\_\_\_\_

\_\_\_\_\_

Work Address: \_\_\_\_\_

\_\_\_\_\_

\_\_\_\_\_

*Please include company, university or other affiliation*

Home E-mail Address: \_\_\_\_\_

Work E-mail Address: \_\_\_\_\_

**NOTE:** Your membership dues include delivery of the monthly SDAG newsletter and announcements to the email addresses given.

Phone: Home: \_\_\_\_\_ Work: \_\_\_\_\_ Cell: \_\_\_\_\_

Website: \_\_\_\_\_

Are you willing to serve as an **officer**? \_\_\_\_\_ Are you willing to volunteer as a **guest speaker**? \_\_\_\_\_

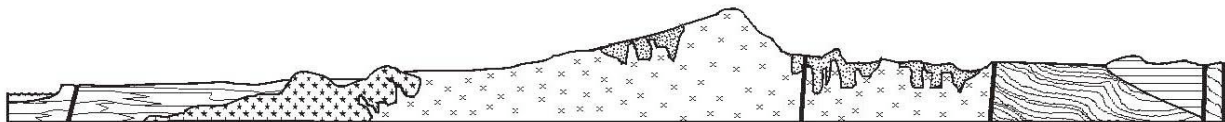
Field(s) of Interest: \_\_\_\_\_

Dues: \_\_\_\_\_ Student Member (email delivery only) \$ 5.00  
(check choice) \_\_\_\_\_ Regular Member (email delivery only) \$ 25.00  
\_\_\_\_\_ Donation Student Scholarships \$ \_\_\_\_\_

☐ New/Returning Member ☐ Continuing Member

Please enclose a check payable to SDAG, and mail to:

San Diego Association of Geologists (SDAG)  
3130 N Evergreen Street  
San Diego, CA 92110



## SAN DIEGO ASSOCIATION OF GEOLOGISTS

### 2015 SPONSORSHIP FORM

NAME: \_\_\_\_\_ DATE: \_\_\_\_\_

(as you would like it to appear in Newsletter, Website, and Guidebook)

Please type or print clearly, and check ☒ preferred mailing address below.

☐ Residential Address: \_\_\_\_\_

☐ Office/School Address: \_\_\_\_\_

Website: \_\_\_\_\_

Home E-mail Address: \_\_\_\_\_

Work E-mail Address: \_\_\_\_\_

*NOTE: Your Sponsorship includes a complimentary SDAG membership, and delivery of the monthly SDAG newsletter and announcements to the email addresses given.*

Phone: Home: \_\_\_\_\_ Work: \_\_\_\_\_ Cell: \_\_\_\_\_

#### Donation Level and Consideration:

☐ **EMERALD \$100.00** (In addition to monthly recognition for your contribution, you are entitled to a free Internet "link" from SDAG Website. We also list all Sponsors in any publications printed this year)

☐ **RUBY \$500.00** (In addition to the above, you are entitled to an image of your business card in the monthly newsletter and SDAG Website)

☐ **DIAMOND \$1,000.00** (In addition to the above, you will receive a commemorative plaque in recognition for your most generous support of the organization)

New Member / Donor ☐ Continuing Member ☐ Change of mailing address: ☐

Are you interested to serve as an officer? \_\_\_\_\_ Willing to volunteer as a guest speaker? \_\_\_\_\_

Please make check payable to San Diego Geological Society, Inc., a 501(c)3 public benefit nonprofit educational corporation (in order to claim a tax deduction), and mail to:

San Diego Geological Society, Inc.  
3130 North Evergreen St.  
San Diego, California 92110 *Thank you!*

*Donations may also be made  
at monthly meetings.*

*Revised 11/18/2014*

---

## SDAG PRESIDENT'S CORNER

Whoa! SDAG has been around a while. By now, should be aware of SDAG's "Over the Hill" (> 40yo) status. Congrats to those of you around since the beginning. We now have a new milestone that I am honored to note. This past November, 2014 marked the 25<sup>th</sup> Anniversary of Dr. Tom Deméré gracing us with his illustrious presence. Just over 25 years ago:



## SAN DIEGO ASSOCIATION OF GEOLOGISTS

### 1989 EXECUTIVE COMMITTEE

**CHAIRPERSON**

Jim Evans  
Engineering Geologist  
2926 Harris Drive  
Vista, CA 92084  
(619) 758-3176

**VICE CHAIRPERSON**

Diane Murbach  
GeoPacifica  
4403 Manchester Ave. #206  
Encinitas, CA 92024  
(619) 943-0060

**SECRETARY**

John Hoobs  
Geocon Incorporated  
6960 Flanders Drive  
San Diego, CA 92121  
(619) 558-6900

**TREASURER**

Sue Tanges  
Leighton and Associates

**PUBLICATIONS COORDINATOR**

Lyne Perry  
Leighton and Associates  
3934 Murphy Canyon Road, Suite B205  
San Diego, California 92123  
(619) 292-8030

### M E E T I N G   N O T I C E

Monday, November 6, 1989

**SPEAKER:** Thomas A. Deméré

**TOPIC:** Walruses and Brontotheres - New Discoveries from the South Bay Pliocene and North County Eocene.

**PLACE:** San Diego Natural History Museum  
Balboa Park  
San Diego, California

**TIME:** 6:00 - Social Hour  
7:00 \* Dinner  
8:00 - Program

**DINNER:** Catered by El Indio

**PRICE:** \$20.00

**RESERVATIONS REQUIRED:**

By Noon Thursday, November 2, 1989. Please phone in your reservation ASAP to the receptionist at Geocon Incorporated (619) 558-6900. A reservation made is a reservation paid. If you need to cancel your reservation, please call Geocon Incorporated.



#### ANNOUNCEMENTS:

- 1) Tom Demèrè is with the Natural History Museum's Department of Paleontology. He is an alumnus of SDSU and USC, and is currently attending UCLA. Come hear about his latest (and greatest) findings!
- 2) Please note that a Natural History Museum membership form is enclosed in this flyer. Become a museum member and support the second oldest scientific museum west of the Mississippi (don't ask who's the oldest!).
- 3) SDAG is pleased to announce that it has "adopted" a journal for the Natural History Museum library entitled "Journal of Sedimentary Petrology". Tom Deméré (232-3821) reminds us that other journals are still available for adoption and that the museum library is open to any and all serious persons as a research facility.
- 4) Call for Donations for the yearly December raffle meeting. SDAG will raffle maps, books, geology equipment, or any other item contributed. If you would like to contribute, please contact Sue Tanges or Lyne Perry at Leighton and Associates (619) 292-8030.
- 5) Call for Posters for December meeting. Traditionally, the December meeting has been a poster session where you can display any geologic or geotechnical work that you or your company would like to share with the rest of the geologic community. Students from San Diego State University will also be presenting posters based on their thesis research. This is an excellent way of having the geotechnical community interface with students. If you have a poster that you would like to display at the December meeting, please contact John Hoobs at Geocon Incorporated (619) 558-6900.
- 6) SDAG is looking for corporate sponsors to help us in our yearly expenses. SDAG received a corporate sponsorship in September from GeoPacifica. SDAG would like to thank GeoPacifica for their sponsorship and we will recognize them in our 1989 SDAG Directory. If you or your company would like to become a corporate sponsor and be recognized in our SDAG newsletter, SDAG Directory and at the following month's meeting, send a minimum \$100 contribution to SDAG c/o Mr. John Hoobs, Geocon Incorporated, 6960 Flanders Drive, San Diego, California, 92121-2974.
- 7) The SDAG 1989 publication will be a joint publication with the Southern California Earthquake Preparedness Project (SCEPP). The publication will include proceedings from the Rose Canyon Fault Zone workshop held June 29 and 30, 1989. The publication will include the SDAG 1989 field trip road log for the field trip held on October 21 and 22. The publication will be available (hopefully) by December 13.



ANNOUNCEMENTS (Continued):

- 8) A one-day ASCE ground modification seminar will be held at Humphrey's Restaurant on Shelter Island on October 28, 1989 from 8:00 a.m. to 4:00 p.m. For more details, call Michael Uzdavines at Woodward-Clyde Consultants (619) 294-9400.
- 9) The Friends of the Pleistocene 1990 field trip will visit the Elsinore fault in the Coyote Mountains, ancient Lake Cahuilla, the Yuha Desert, and the Superstition Mountains and Coyote Creek faults. The dates of the field trip are January 6 and 7 (and maybe the 5th), 1990. For more information, please call Tom Rockwell at the Department of Geology (619) 594-4441.
- 10) Deadline for announcements to be included in the December newsletter is November 22, 1989. Please submit to John Hoobs, in writing, at Geocon Incorporated, 6960 Flanders Drive, San Diego, CA 92121 (Fax (619) 558-6159).

JOB OPPORTUNITIES:

- 1) Ninyo & Moore, Geotechnical and Environmental Consultants, is actively looking for a Chief Geotechnical Engineer and Chief Engineering Geologist for the Orange County (Irvine) office. Excellent salaries and benefits commensurate with technical and managerial capabilities. Please submit resumes in confidence to: Ninyo & Moore, 10225 Barnes Canyon Road, Suite A-112, San Diego, California 92121, Attention: Mr. Avram Ninyo.

25 years later, Tom is still making discoveries (see this month's abstract), we are still welcoming corporate sponsors, The FOP have been cloned (assuredly without the proper permissions) on the east coast?? (<http://www.friendsofthepleistocene.com/>), and Mr. Avram Ninyo still has positions to fill: (<http://www.ninyoandmoore.com/careers/jobs>)

Cheers!

**Brian J. Olson**  
**2014 SDAG President**

---

# **ANNOUNCEMENTS**

---

## **CALL FOR PAPERS - SDAG 2015 FIELD TRIP**

### **“Western Salton Trough Regional Tectonics, Coyote Mountains and Vicinity”**

Late October or Early November, 2015  
(Most Likely November 6-8, 2015)

On this field trip we will explore the complex geologic history of the western Salton Trough as expressed in the Coyote Mountains north of Ocotillo. Paleozoic miogeoclinal metamorphic rocks, coarse-grained Mesozoic intrusive rocks, and Cenozoic sedimentary rocks and conglomerates have been deformed by major faulting. Complex structure challenges interpretation. We seek to examine revealing outcrops that help to illustrate the stratigraphy, structure, and regional geology in this area. We will also consider the mineral potential, tectonics of the region, and resulting landforms.

SDAG seeks new manuscripts based on original work relating to regional geology and tectonics, from the western Salton Trough in San Diego and Imperial counties, and Baja California. We also invite authors to submit articles on the history of the region as it relates to geology and geomorphology.

Deadline for Abstracts: Friday, May 29, 2015

Please submit the following information along with abstracts:

- Title
- Author(s) and affiliation
- Address, email, and telephone numbers for the author(s)

Submit abstract by e-mail to Randy Wagner: [randallwagner@live.com](mailto:randallwagner@live.com) (760) 877-3490

---

## **2014 Outstanding Student Award Winners**

Congratulations to our 2014 SDAG Student Award Recipients! Thanks to all of our sponsors and members this year; we are awarding five \$1,000 Outstanding Student Awards. The awards will be presented at the December SDAG meeting to the following students:

### **Xiomara Rosenblatt-Dailey, Southwestern College**

Through an internship at the San Diego Natural History Museum, Ms Rosenblatt is working on the identification of Eocene Chondrichthys.

### **Clifford Hoang, undergraduate, University of California San Diego**

Mr. Hoang is working on small-scale sea surface salinity variability in the Middle Atlantic Bight.

### **Tyler Barnes, undergraduate, University of San Diego**

Mr. Barnes is monitoring turbidity in bays with coral reefs, St. John, US Virgin Islands

**Bridget Borce, undergraduate, San Diego State University**

Ms. Borce is working on the development of the Florissant Fossil Beds National Monument Geologic Guide in Teller County, Colorado.

**Ashley Heath, graduate student, San Diego State University**

Ms. Heath is working on effects of illuviation on the petrology and chemistry of tonalitic saprock.

---

## **CALL FOR ARTICLES!**

SDAG invites members to submit articles on their current research or an interesting project they are working on for publication in the monthly newsletter. The article should be no more than 1 page in length. Photos are welcomed; too. Please submit articles to the SDAG secretary via email.

---

## **SDAG RESEARCH TOOL**

A comprehensive listing of all papers published by SDAG, whether as annual field trip guidebooks or special publications, is now available on our website. Entries are sorted by primary author, or chronologically by date of publication, from our first guidebook in 1972, through the Palms to the Pines, and finally up the San Luis Rey River in 2013. These can be accessed or downloaded as .pdf files. They are fully searchable in Adobe Reader or Acrobat, so if you are researching a topic, "tsunami" for example, you can search for that keyword. This listing will be updated as new books are published. Thanks to Greg Peterson and Hargis + Associates, Inc., for making this possible. See the links below:

[http://www.sandiegogeologists.org/SDAG\\_Pubs\\_authors.pdf](http://www.sandiegogeologists.org/SDAG_Pubs_authors.pdf)

[http://www.sandiegogeologists.org/SDAG\\_Pubs\\_chronological.pdf](http://www.sandiegogeologists.org/SDAG_Pubs_chronological.pdf)



The 2015 GSA Annual Meeting will be November 1 - 4, 2015  
in Baltimore, MD, at the Baltimore Convention Center

---

## Geology Books for Sale

A local geologist has a large collection of historic books for sale on coastal geology, sedimentology, marine geology, and oceanography, many of which are out of print. If interested, please email Gerry Kuhn at [gerrykuhn@gmail.com](mailto:gerrykuhn@gmail.com).

Here is a preliminary list of the publications for sale:

- 1858.** Mathew F. Maury. The Physical Geography of the Sea. Harper and Brothers, Publishers., New York, 570pp. w/plates (Good).
- 1880.** Dana, J.D., Manual of Geology: Treating of the Principles of the Science, with special reference to American Geological History. 3rd edition, Ivison, Blakeman, Taylor and Co., Publishers, Trubner and Co. London. (Good)
- 1886.** Winchell, A. Walks and Talks in the Geological Field. Chautauqua Press, NY., 329pp. (Good).
- 1890.** Charles Darwin. On the Structure and Distribution of Coral reefs; also Geological Observations on the Volcanic Islands and parts of South America; Ward, Lock and Co., London., 549pp. (The Minerva Library of Famous Book, ed. G.T.Bettany). (Fair to Good).
- 1891.** Le Conte.J., Elements of Geology., Appleton and Co. NY., 640pp. (Fair).
- 1898.** Green, J.R., A Short History of the English People (with maps and tables), New Edition, Revised., Harper and Brothers, Publishers., New York and London, 871pp. (Fair to Good).
- 1903.** LeConte, J.. Elements of Geology. 5th edition., D. Appleton and Company., 667pp. (Fair).
- 1904.** Chamberlain, T.C., and Salisbury, R.D., Geology. Vol. I-Geologic Processes and Their results., Holt and Co., 654pp. (Fair to Poor).
- 1905.** Fairbanks, H.W., Practical Physiography (with 900 colored maps and three hundred ninety four illustrations, Allyn and Bacon, Publishers, Boston and Chicago., 542pp.(Good to Very Good).
- 1907.** Salisbury, R.D., Physiography., Henry Holt and Company, NY., 770pp.(Good).
- 1907.** Chamberlain, R.T., and Salisbury, R. D., Geology., Vol. II Earth History., 2nd Ed., Revised., Holt and Co., 692pp. (Fair to Poor).
- 1908.** Davis, W.,M., Practical Exercises in Physical Geography. Ginn and Company, Boston, MA. 148pp. (Good).
- 1909.** Chamberlain, T.C. and Salisbury, R.D., A College Textbook of Geology., Henry Holt and Company, New York, NY., 978pp. (Fair).
- 1915.** Piersson, L.V., and Schuchert, C. A Text-Book of Geology., Wiley & Sons. 1051pp.
- 1920.** Piersson, L.V., and Schuchert., C.. A Textbook of Geology: Part One Physical Geology, 2nd edition-revised, Wiley and Sons Inc., 471pp.(Fair to Good).
- 1924.** Alfred Wegener. The Origin of Continents and Oceans. Translated from the 3rd German Edition, with introduction by J. W. Evans, E.P.H. Dutton and Company, Publishers. Great Britain, 212pp. (Fair).
- 1925.** Johnson,D. The New England-Acadian Shoreline. Wiley and sons., NY.,608pp. (Good).
- 1926.** Daly, R.A.. Our Mobile earth. Charles Scribner's Sons, NY., 342pp.
- 1928.** W.A. J.M. Van Waterschoot Van Der Graucht et al. A Symposium on the Origin and Movement of Land Masses both Inter-Continental and Intra-Continental, as Proposed by Alfred Wegener., Amer. Assn. Petroleum Geologists, Tulsa, OK., 240pp. (Good).
- 1929.** Cleland, H.F.. Geology: Physical and Historical. Amer. Book Company, NY., 718pp. (Good)
- 1929.** Gieke. A.,(Sir). Text-Book of Geology. 3rd edition., P.F. Collier and Sons., NY., 503pp. (Fair).
- 1929.** Piersson, L.V., and Schuchert, C., A Textbook of Geology, Wiley and Sons., 3rd Ed., 488pp. (Fair to Good).
- 1930.** Tarr, R.S., and Martin, L., College Physiography. MacMillan Company., NY., 837pp. (Good).
- 1931.** Hobbs, W.H., Earth Features and Their Meaning: Geology.,2nd. Ed., MacMillan Co., N.Y., 517pp. (Good).
- 1931.** Fenneman, N.M.. Physiography of Western United States, 1st edition, 2nd impression. McGraw-Hill Book, Company, Inc., NY., 534pp. (Good)
- 1931.** Longwell, C.W. and Schuchert, C., Foundations of Geology., Wiley and Sons., (Physical Geology Section, 256pp.); (Historical Section, 2nd edition, rewritten, 328pp.). (Fair to Good).

- 1932.** Scott, W.B., An Introduction to Geology., Vol. I, Physical Geology, 3rd Ed., MacMillan Co., N.Y., 604p.
- 1932.** Trask, P.D., Origin and Environment of source Sediments of Petroleum, Amer. Pet. Institut., 309 (Poor).
- 1938.** Johnson, D.W.. Shore Processes and Shoreline Development., Wiley & Sons., 1st ed., 4th printing, 584pp. (Good).
- 1938.** Fenneman, N.M., Physiography of Eastern United States., 1st edition., McGraw-Hill Book Company, Inc., 714pp. (Good).
- 1939.** Lobeck, A.K., Geomorphology. 1st edition., McGraw-Hill Publishing Company, Inc., NY., 731pp. (Good).
- 1939.** A Textbook of Geomorphology. D. Van Nostrand Company, Ltd. 565pp.
- 1947.** Jaggar, T.A., Origin and Development of Craters., Geol. Soc. Of Amer. Memoir 21., 508pp. (Very Good).
- 1948.** Larsen, E.S., Jr., Batholith and Associated Rocks of Corona, Elsinore, and San Luis Rey Quadrangles, Southern California., Geol. Soc. Of Amer. Memoir 29., 182pp. (Good).
- 1957.** Hedgepeth. J.W., Editor. Treatise on Marine Ecology and Paleoecology., Vol. #1-Ecology. Geol. Soc. Of Amer. Memoir 67., 1296pp., (Very Good).
- 1957.** Ladd, H.S., Editor., Treatise on Marine Ecology and Paleoecology., Vol#2 -Paleoecology. Geol. Soc. Of Amer. Memoir 67., 1077pp. (Very Good).
- 1951.** Phleger and Parker. Ecology of Foraminifer, Northwest Gulf of Mexico., Geol. Soc. Of Amer. Memoir 46, 64pp. with plates. (Good).
- 1951.** Kay, M. North American Geosynclines., Geol. Soc. Of Amer. Memoir 48, 143pp. ((Very Good).
- 1958.** Cooper, W. S. Coastal Sand Dunes of Oregon and Washington., Memoir 72, 169pp. (Very Good).
- 1956.** Hamilton, E. L., Sunken Islands of the Mid-Pacific Mountains, Geol. Soc. Of Amer. Memoir 64, 96pp., with Plates. (Very Good).
- 1971.** Khudoley, K.M., and Meyerhoff, A.A., Paleogeography and Geological History of Greater Antilles., Geol. Soc. Of Amer. Memoir 129, 199pp. (Very Good)
- 1977.** Enos, P., and Perkins, R.D., Quaternary Sedimentation in South Florida., Geol. Soc. Of Amer. Memoir 147. (Very Good).
- 1981.** Kulm, L.D., et. al., Eds. Nasca Plate: Crustal Formation and Andean Convergence., Geol. Soc. Of Amer. Memoir 154. 824pp. (Very Good)

---

## Geology Job Opportunities/Requests

---

**Internship/Job Shadow:** My name is Wesley Antczak and I am currently a prospective geologist interested in studying hydrogeology. I am writing to see if anyone or any organization is accepting applications for internships or would be interested in allowing me the opportunity to shadow them during a day of work. Currently, I am trying to decide if I should go back to school and earn a second bachelor's degree in geology and I want to be 100% sure before I take on the massive commitment.

If you or your company can offer me some insight into the geology profession, please contact me at [Wesley.Antczak@gmail.com](mailto:Wesley.Antczak@gmail.com).

Furthermore, if anyone has any advice that could assist me in this decision, I would greatly appreciate your input.

Thank you and have a great day,

Wesley Antczak  
[Wesley.Antczak@gmail.com](mailto:Wesley.Antczak@gmail.com)

---

---

## **REQUEST for 2015 SDAG/SDGS and PUBLICATION SPONSORS**

On behalf of the San Diego Geological Society, Inc. (SDGS), a public benefit 501(c)3 nonprofit educational corporation, we would like to request tax deductible Donations for our San Diego Association of Geologists (SDAG) group. The list of paid Sponsors and the forms to become a Sponsor are located on the SDAG web site at: <http://www.sandiegogeologists.org/Sponsors.html>.

Your donation will further the SDGS mission to promote geology and related fields in the greater San Diego region, operating through the San Diego Association of Geologists (SDAG), a committee of SDGS. To achieve our primary educational objective, we organize frequent field trips and maintain a program of monthly meetings featuring speakers on current geological topics. We also publish field trip guidebooks and other publications related to geology and natural history. We encourage scholarship and research by awarding scholarships from the elementary through graduate levels. With your \$100 "EMERALD" donation, your name/business will be listed as a sponsor on the SDAG web site (<http://www.sandiegogeologists.org/>) and in the monthly SDAG meeting newsletters. With your \$500 "RUBY" or \$1,000 or more "DIAMOND" level donation, your business card will also be included on the SDAG web site and in the monthly SDAG meeting newsletters. In addition, as a "\$1,000 or more DIAMOND" level donation you will be presented with a thank you plaque.

Should you have any questions regarding a Sponsorship, please contact our non-profit SDGS Secretary (Diane Murbach) at 619-865-4333.

The following are our 2013-2014 Sponsors:



## CORPORATE SPONSORS



HARGIS+ASSOCIATES, INC.  
HYDROGEOLOGY • ENGINEERING

Hargis + Associates, Inc. is an environmental consulting firm specializing in hydrogeology and engineering. We are headquartered in San Diego, California and have offices in Mesa and Tucson, Arizona. Our practice areas include all aspects of hydrogeology and engineering.

As a client service organization, we pride ourselves in being attentive and efficient in meeting our client's needs and solving their problems. In addition to our technical expertise, communication and responsive coordination are hallmarks of our reputation.

We invite you to explore our website to learn more about our firm and the services we provide. We welcome the opportunity to discuss our consulting expertise directly with you.

**Contact: Dr. David R. Hargis**



Mobile  
Geochemistry Inc.

**H&P Mobile Geochemistry** is an industry-leading provider of environmental lab services. With ten mobile labs and five direct push sampling trucks and unparalleled experience, **H&P's** repertoire of environmental lab services includes many forms of environmental lab sampling techniques all the way to on site field analysis services. **H&P** has successfully and accurately performed environmental lab services delivering quality results to our clients for over 16 years.

2470 Impala Dr., Carlsbad, CA 92010  
(800) 834-9888

**Contact: Louise Adams or Suzie Nawikas**

## CORPORATE SPONSORS (con't)



**Shaping the Future**

At **Cardno ERI**, we're experts at providing safe, high quality, cost-effective solutions to environmental concerns. We're large enough to tackle extensive, complex projects, yet small enough to provide exceptional service in a timely manner while paying close attention to controlling costs. In short, we combine the expertise, technology, and dedicated service you need to receive the best possible solutions to your environmental concerns.

<http://www.cardnoeri.com>

**Contact: Steve Zigan**



**Chambers Environmental Services, Inc.**

**Dan Chambers**

President

**Phone/FAX (858) 279-3266**

Cellular: (619) 889-9331

E-Mail: [DWChambers@Hotmail.com](mailto:DWChambers@Hotmail.com)

4510 Mt. Henry Avenue  
San Diego, CA 92117



<http://www.fsrengineering.com/>



**TETRA TECH**

complex world | **CLEAR SOLUTIONS™**

**Tetra Tech** is a leading provider of consulting, engineering, and technical services worldwide. We are a diverse company, including individuals with expertise in science, research, engineering, construction, and information technology. Our strength is in collectively providing integrated services-delivering the best solutions to meet our clients' needs. Visit us at:

<http://www.tetratech.com>

**Contact: Dave Bloom**



ENVIRONMENTAL & GEOTECHNICAL CONSULTANTS

Since 1991, **Mission Geoscience** has provided consistent and reliable professional services with our dedicated staff of highly credentialed professionals, who are committed to both timeliness and cost-effectiveness as the cornerstones of their work. **MISSION's** staff remains amongst the most highly respected firms in the environmental and geotechnical industry, which is why many of our clients tend to assign us their most difficult and challenging projects.

<http://www.missiongeoscience.com/>

**Contact: Jim Ashby**



**CRUX**  
**subsurface, inc.**

A QUANTA SERVICES COMPANY

<http://www.cruxsub.com/>

**Contact: Brian Olson**

## CORPORATE SPONSORS (con't)

[Dr. Pat Abbott](#) - SDSU Prof. of Geology, Emeritus  
Sally & Dennis Avery  
[Dr. Richard Berry](#) - SDSU Prof. of Geology and Geophysics, Emeritus  
Curtis Burdett  
Larry Cann  
Don Wilson Clark and Katy Freese  
Joe Coronas - [City of San Diego](#)  
Greg Cranham - Consulting Geologist  
Dr. Neal Driscoll – UCSD Professor of Geology and Geophysics  
William J. Elliott, Engineering Geologist  
Phil Farquharson - [CG-Squared Productions](#)  
Leighton Group - <http://www.leightongroup.com>  
Carolyn Glockhoff - [Caro-Lion Enterprises](#)  
Cari Gomes  
[Dr. Sarah Gray](#)  
Rob Hawk [City of San Diego](#)  
Lowell A. Lindsay and Diana Lindsay - [Sunbelt Publications/AESE](#)  
[Dr. Monte Marshall](#) - SDSU Prof. of Geology and Geophysics, Emeritus  
[John Minch](#)  
Monte and Diane Murbach - [Murbach Geotech](#)  
Brian J. Olson  
[Pacific Drilling Company](#)  
Peets Coffee and Tea, Store No. 342 , Carlsbad [www.peets.com](http://www.peets.com)  
Les Reed – Geotechnical Exploration Inc.  
Todd Wirths  
Rigid Lifelines [www.rigidlifelines.com](http://www.rigidlifelines.com)  
SEALASKA Environmental Services, LLC, Mukesh Mehta, PG, CEG  
Gerald Shiller  
Bob Smillie, Terra Costa Consulting Group, Inc.  
Scott Snyder <http://www.snydergeologic.com>  
[Southwest Geophysics, Inc.](#)  
David and Jan Steller ("two-fer" - thanks )  
[Dr. Anne Sturz](#)  
Sue Tanges - Southland Geotechnical Consultants  
Terra Costa Consulting Group, Inc.  
Mary Walke  
Carole L. Ziegler  
<http://www.youtubedownloadersite.com>  
Martin and Sherry Bloom – mbloom@san.rr.com