

SAN DIEGO ASSOCIATION OF GEOLOGISTS

<http://www.sandiegoeologists.org>

SDAG MEETING ANNOUNCEMENT

Wednesday, February 19, 2020

Important Geotechnical Aspects of Infiltration

Presented by: Jeremy Faker, P.E.

Where: Marina Village – Catalina Room
1936 Quivira Way
San Diego, CA 92109 (See Map)

When: 5:30 pm – Social Hour
6:30 pm – Dinner
7:30 pm – Presentation

Dinner: Hawaiian Buffet
Cash Bar – Walawender Tavern

Cost: \$30 Member, \$35 Non-Member, \$20 Students.

Reservations: Make your reservation **online** at <http://www.sandiegoeologists.org/Meetings.html> **no later than noon, Monday February 17, 2020**. Reservations cannot be guaranteed after Friday at noon but are always preferred over walk-ins. **EARLY reservations well before the deadline are MUCH appreciated.**

Directions:

FROM INTERSTATE 5: Take the SEA WORLD DRIVE exit. From SEA WORLD DRIVE, take WEST MISSION BAY DRIVE on your right. When you see the large green sign that says QUIVIRA ROAD, get in the farthest left of the two left turn lanes. Turn left, go one very short block and turn left again. Drive about one-half mile and MARINA VILLAGE will be on your right.

FROM INTERSTATE 8: Take the WEST MISSION BAY DRIVE exit to the right. You will be on INGRAHAM STREET for a short distance from which you will take the next exit marked WEST MISSION BAY DRIVE on your right. When you see the large green sign that says QUIVIRA ROAD, get in the farthest left of the two left turn lanes. Turn left, go one very short block and turn left again. Drive about one-half mile and MARINA VILLAGE will be on your right.



ABSTRACT

The presentation will discuss important geotechnical aspects of infiltration field testing and BMP design. Specifically, the presentation will discuss the current City and County of San Diego geotechnical design and reporting requirements, NRCS soil types, types of infiltration field testing (test procedures, applications, advantages, disadvantages) and geotechnical constraints, among other aspects. We will also discuss a few local examples that highlight important aspects of infiltration.

BIO

Jeremy is a project geotechnical engineer at Group Delta with 8 years of professional experience working on infrastructure, industrial, commercial, military, and higher education projects. He has coordinated, conducted, and managed geotechnical site investigations and has experience performing and managing on-site quality control and quality assurance of geotechnical related construction activities for large- and small-scale grading and construction projects. For the last 5 years, Jeremy has performed field infiltration testing and infiltration feasibility assessments for shallow and deep storm water best management practices (BMPs) on a variety of projects across Southern California. Jeremy is a San Diego native, and has an M.S. degree in geotechnical engineering from the University of Texas at Austin (2014) and B.S. in Civil Engineering from Cal Poly San Luis Obispo (2010).

UPCOMING MEETINGS

Meetings are usually held on the 3rd Wednesday of the month may change to accommodate the speaker and meeting place schedules. Check the SDAG website for updates

March 2020 TBD	Anza Borrego Natural History By: Mike Wells
April 2020 Geocon Office	Cannabis, Water and Environmental Crimes in Southern California By: Eric Lindberg, PG, CHG
May 2020 TBD	TBD

2019 SDAG EXECUTIVE COMMITTEE

<u>PRESIDENT:</u>	Adam Avakian; armenianmenace1@gmail.com
<u>VICE PRESIDENT:</u>	Luke Weidman; lcweidman@gmail.com
<u>SECRETARY:</u>	Nadja Scholl; secretary@sandiegogeologists.org
<u>TREASURER:</u>	Keith Kastama
<u>PUBLICATIONS:</u>	Lowell Lindsay; <i>Sunbelt Publications</i> ; Ph: (619) 258-4911, x111; llindsay@sunbeltpub.com

One Stop Wonder

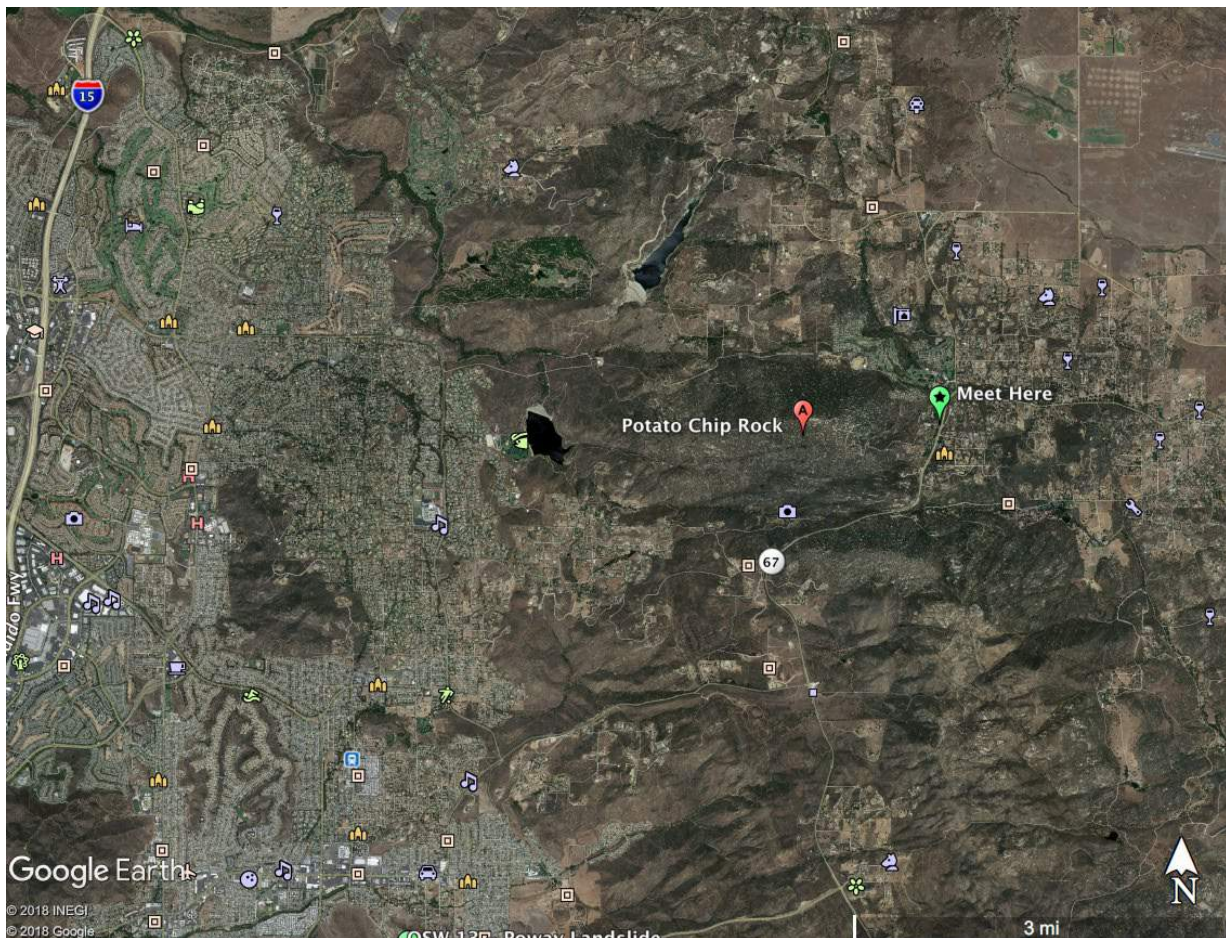
Please join us for our next One Stop Wonder to Potato Chip Rock on January 11 at 9:00 a.m. We will start from Highway 67 in Ramona and will walk up the paved Mt. Woodson Road. This will be a moderately strenuous and relatively steep hike; bring plenty of water.

From North County: Take I-15 to Camino Del Norte and head east. Turn right on Espola Road, left on Poway Road, and left on Highway 67.

From the coast: Take I-5 to Highway 56 and head east. Turn right on Twin Peaks Road, right on Espola Road, left on Poway Road, and left on Highway 67.

From South County: Take Highway 52 or I-8 to Highway 67 and head north.

There will be parking on the side of the road, but it can be busy on the weekend. Carpooling is recommended.



SDAG PRESIDENT'S CORNER

Hi SDAG Members,

Welcome to 2020! Hope you all are well rested and recharged from the holidays. I want to say thanks to Mission Trails Visitor Center for hosting our January meeting and thank you to Dr. Pat Abbott for presenting and answering questions on the production of the Mission Trails Geology movie. It was an excellent and very entertaining movie. This was my first time exploring the visitor center there and I was very impressed with the scenery and displays. We are looking forward to continuing our relationship with MTVC and holding future meetings there. I also want to say thanks to all the members that attended. We had an excellent turnout of about 90 people!

Moving into the new year I would like to introduce our new officers and acknowledge Ken Haase for finishing up with his volunteer work with SDAG and successfully making it through all four officer positions. Our new officer lineup is as follows: Keith Kastama (Treasurer), Nadja Scholl (Secretary), Luke Weidman (Vice President) and Adam Avakian (President). We have a great team here and are looking forward to providing our members with lots of fun geology in 2020!

Our meeting this month will be on infiltration/percolation testing for storm water runoff mitigation for new developments. This is a very pertinent topic in the last 5 years or so as regulations and requirements for new construction projects have changed. Some of us being geotechnical consultants typically must assist with the design of these infiltration systems. So, this will be an interesting, more industry related talk. I'm also very excited to have my former coworker, Jeremy Faker giving us this presentation.

Looking forward to seeing everyone at the meeting!

-Adam Avakian

Support SDAG/SDGS using AmazonSmile



What is AmazonSmile?

AmazonSmile is an automatic way for you to support the **“San Diego Geological Society”** (SDGS) SDAG’s 501(c)(3) as your favorite public charitable organization every time you shop on Amazon at no cost to you at smile.amazon.com.

How do I select a charitable organization to support when shopping on AmazonSmile?

On your first visit to AmazonSmile smile.amazon.com, you need to select a charitable organization to receive donations from eligible purchases before you begin shopping. Please select the **San Diego Geological Society**. Amazon will remember your selection, and then every eligible purchase you make at smile.amazon.com will result in a donation to SDGS (SDAG).

How much of my purchase does Amazon donate?

The AmazonSmile Foundation will donate 0.5% of the purchase price from your eligible AmazonSmile purchases.

How can I learn more about AmazonSmile?

Please see complete AmazonSmile [program details](#).

National Earthquake Conference

The 2020 National Earthquake Conference (NEC) <http://www.earthquakeconference.org/> will take place during the week of March 2, 2020 in San Diego and will bring together academia, building code experts, design/build professionals, FEMA directorates, first responders, geologists, local emergency managers, insurance and reinsurance professionals, local and tribal governments, private-sector interests, public information officers, state government leaders, social science practitioners, U.S. State and Territorial Earthquake Managers, USGS leadership, and volunteers. Attendees will share the latest advances in earthquake science, engineering, policy, and practice to create more resilient buildings and disaster-resilient communities in the face of seismic risk. The results of a new earthquake scenario and risk study for the San Diego region will be a key highlight of the conference. Developed by experts over the last five years, the scenario will showcase the impacts and consequences of a potential M6.9 earthquake on the Rose Canyon fault that runs through the San Diego harbor, resulting in significant disruption and loss to local communities. Participating experts will share findings from seismological and geologic simulations, engineering inventory and assessment studies, and local stakeholder focus groups.

Southern California AEG Meeting

On Tuesday, 11 February 2020, the Southern California Chapter of the Association of Environmental & Engineering Geologists will be hosting an evening seminar by Mr. Matthew Hacker, P.G., of the Metropolitan Water District of Southern California, at Steven's Steak House & Seafood House in Commerce. Mr. Hacker will be presenting on the "Groundwater Conditions in the Metropolitan Water District Service Area". The event will begin with a social hour at 5:45 PM, dinner at 6:45 PM, and the presentation at 7:45 PM. See attached flyer for more event details.

Mr. Matthew Hacker has more than 25 years of experience in water resources planning and local resource development, including recycled water, groundwater, and stormwater. Matthew is currently a Senior Resource Specialist at the Metropolitan Water District of Southern California working on innovative project solutions, including Metropolitan's groundbreaking Regional Recycled Water Program. He will be speaking about Metropolitan's role in local resource development, groundwater conditions in Metropolitan's service area, and long-term sustainability of groundwater in Southern California.

Please RSVP by contacting Matt Pendleton at AEG.SouthernCalifornia@gmail.com <mailto:AEG.SouthernCalifornia@gmail.com> or by phone at (650) 292-9106. Reservations are required by 11:00 AM on Monday, 10 February. We must have reservations to give the restaurant an estimate of the number of dinners.

SDAG Research Tool

SDAG RESEARCH TOOL - A comprehensive listing of all papers published by SDAG, whether as annual field trip guidebooks or special publications, is now available on our website. Entries are sorted by primary author, or chronologically by date of publication, starting with our first guidebook in 1972, from Coast to Cactus in 2014, and finally on the Julian 'Road to Gold' in 2017. These can be accessed or downloaded as .pdf files. They are fully searchable in Adobe Reader or Acrobat, so if you are researching a topic, "oikocryst" for example, you can search for that keyword. This listing will be updated as new books are published. Thanks to Greg Peterson and Hargis + Associates, Inc., for making this possible. See the links below:

http://www.sandiegogeologists.org/SDAG_Pubs_authors.pdf

http://www.sandiegogeologists.org/SDAG_Pubs_chronological.pdf

Interactive Fault Map for San Diego - Tijuana

As part of the update for the San Diego-Tijuana Earthquake Planning Scenario, Working Group No. 1's "Fault Map Subcommittee" completed the first publicly available bi-national active and potentially active fault map (http://sandiego.eeri.org/?page_id=265). This interactive GIS map includes the first publicly available active and potentially fault map locations from the City of San Diego. The map also integrated the faults south of the border for a bi-national cross border view. This map is an on-going project as our knowledge increases about local active and potentially active faults.

You can expand the map legend on the left side to select layers that can be turned on or off for the map view. You can also select from 1 of 12 base maps at the base map icon. You can click on the fault line in your map layer view to see the meta-data source. In addition, the City of San Diego Seismic Safety Study Geologic Hazards & Faults Maps are available in the layer titled "GeoHaz SD City." Please note that the City "Zone 12 Potentially Active" fault layers was not included in this data, therefore you will need to use the City Maps to find Zone 12.

The Fault Map link is available at: http://www.sandiegogeologists.org/Faults_map.html

Please contact Diane Murbach (dianemurbach@gmail.com 619-865-4333), Chair for the SDTJ Earthquake Scenario Working Group #1 - Earth Science, if you have any questions, or see any errors on this new fault map.

I would like to thank Carolyn Glockhoff for her endless GIS work, Jim Quinn and the City for providing their data and time, Jerry Treiman with CGS for his time preparing the Surface Rupture and providing their new State fault data layer, and Luis Mendoza at CICESE for providing the faults south of the border. Please contact Diane Murbach (dianemurbach@gmail.com), Chair for the SD-TJ Earthquake Scenario Working Group #1 - Earth Science, if you have any questions, or see any errors on this new fault map.

Diane Murbach (619) 865-4333

Engineering Geologist, C.E.G.

www.murbachgeotech.com

Request for 2020 SDAG/SDGS Publication Sponsors

On behalf of the San Diego Geological Society, Inc. (SDGS), a public benefit 501(c)3 nonprofit educational corporation, we would like to request tax deductible Donations for our San Diego Association of Geologists (SDAG) group. The list of paid Sponsors and the forms to become a Sponsor are located on the SDAG web site at: <http://www.sandiegogeologists.org/Sponsors.html>.

Your donation will further the SDGS mission to promote geology and related fields in the greater San Diego region, operating through the San Diego Association of Geologists (SDAG), a committee of SDGS. To achieve our primary educational objective, we organize frequent field trips and maintain a program of monthly meetings featuring speakers on current geological topics. We also publish field trip guidebooks and other publications related to geology and natural history. We encourage scholarship and research by awarding scholarships from the elementary through graduate levels. With your \$100 "EMERALD" donation, your name/business will be listed as a sponsor on the SDAG web site (<http://www.sandiegogeologists.org/>) and in the monthly SDAG meeting newsletters. With your \$500 "RUBY" or \$1,000 or more "DIAMOND" level donation, your business card will also be included on the SDAG web site and in the monthly SDAG meeting newsletters. In addition, as a "\$1,000 or more DIAMOND" level donation you will be presented with a thank you plaque.

Should you have any questions regarding a Sponsorship, please contact our non-profit SDGS Secretary (Diane Murbach) at 619-865-4333.

Call for Articles

SDAG invites members to submit articles on their current research or an interesting project they are working on for publication in the monthly newsletter. The article should be no more than 1 page in length. Photos are welcomed; too. Please submit articles to the SDAG secretary via email.

Geo Job Listings

Project Geologist Wanted

R. T. Frankian & Associates, Inc.

R. T. Frankian & Associates, Inc., a geotechnical engineering and engineering geology consulting firm since 1963, seeks a qualified individual for Project Geologist position. This position is to work on medium to large size land development-type projects, as well as to develop work within the public sector. The successful candidate must meet the following criteria.

The Project Geologist must -

- Possess BS/BA in Geology, with classes in geologic field mapping, stratigraphy/sedimentology, and structural geology
- Have 1-3 years experience in hillside grading in L. A. County or Southern California
- Be able to perform downhole boring logging, test pit logging, field supervision, slope stability analysis
- Be able to assist CEG with various aspects of land planning and development projects, **especially** field-related aspects
- Be willing to work in various aspects of the job (field, office, and as needed inspection)
- Possess excellent written and verbal communication skills, as well as excellent interpersonal skills
- Being a PG in the State of California is preferred but not required

Senior Engineering Geologist Wanted

R. T. Frankian & Associates, Inc.

R. T. Frankian & Associates, Inc., a geotechnical engineering and engineering geology consulting firm since 1963, seeks a qualified individual for the Senior Engineering Geologist position. This position is to work on medium to large size land development-type projects, as well as to develop work within the public sector. The successful candidate must meet the following criteria.

The Senior Engineering Geologist must -

- Possess BS/BA in Geology, with classes in geologic field mapping, stratigraphy/sedimentology, and structural geology
- Have 3-5 years experience in hillside grading in L. A. County or Southern California
- Be able to perform downhole boring logging, test pit logging, field supervision, slope stability analysis
- Possess excellent written and verbal communication skills, as well as excellent interpersonal skills
- Be willing to work in various aspects of the job (field, office, and as needed inspection)
- Be a CEG in the State of California

R. T. Frankian & Associates, Inc., offers a competitive salary, commensurate with experience and abilities, and a benefits package.

Email resumes to resumes@rtfrankian.com.

GEI Consultants, Inc. is a leading consulting engineering and environmental firm ranked #92 in the ENR top 500 (2018), with over 800 employees in multiple offices throughout the U.S. and Canada. We serve hundreds of government, energy, industry and institutional clients, and have completed 50,000 project engagements throughout the United States, Canada, and more than 20 other countries. Our technical experts are involved in dozens of specialty services emanating from our core solutions in water, energy, buildings, infrastructure and industrial.

We are seeking a full-time **Senior Engineering Geologist** for our Carlsbad, CA office. Experience in geologic investigations for dams and other water infrastructure projects is a plus.

Essential Responsibilities & Duties

- Manage the technical, financial, and client relationship aspects of a variety of geologic/geotechnical engineering projects throughout the country, with a geographic emphasis in California.
- Prepare technical scopes of work and budgets for proposals, and prepare requests for proposals for subcontractor services.
- Plan and lead the implementation of geologic/geotechnical site assessments and subsurface investigations, which include: field mapping, aerial photograph interpretation, rock and soil borings, surface and downhole geophysics, LiDAR analysis, preparation of technical reports, and providing technical oversight of subcontractors including review/approval of invoices and work proposals.
- Participate actively in professional organizations and conferences; deliver presentations, and write technical papers.
- Generate new business.
- Prepare and deliver technical presentations to clients and regulators.
- This position has a field component; travel, and some overnight travel are required.

Minimum Qualifications

- B.S. in Geology; M.S. is a plus.
- P.G. and C.E.G. with registration in California.
- 10+ years of previous professional experience in engineering geology.
- Excellent technical report writing and communication skills.
- Willingness and ability to travel on short-term assignments as needed.
- Valid U.S. driver's license.

GEI is an EEO/AA/M/F/Vet/Disability employer

Apply here: <https://jobs.ourcareerpages.com/job/396913>

For other opportunities within GEI, go to: <https://geiconsultantsinc.ourcareerpages.com/>



Geotechnical Exploration, Inc.

SOIL AND FOUNDATION ENGINEERING • GROUNDWATER • ENGINEERING GEOLOGY

PROJECT GEOLOGIST

Geotechnical Exploration, Inc., a geotechnical engineering company founded in 1976, is seeking a qualified individual for a Project Geologist position available immediately. Position duties, criteria & requirements are as follows:

- Manage and/or perform all phases of a wide variety of development/construction projects
- Supervise the work of staff geologists and technicians
- Prepare geologic/geotechnical reports and review reports prepared by staff geologist and engineers
- Prepare and review boring and trench logs
- Perform and supervise field exploration programs, background reviews, and geological mapping
- Prepare and present proposals, scopes of work and budgets for new projects
- Interface with the client and team to proactively troubleshoot and problem-solve using practical, client-focused solutions
- Manage projects, budgets, scope, change orders and collections (from start to finish)

A strong command of regional soils and rock identification and properties, geologic hazards identification, and all applicable forms of construction observation/testing is mandatory. In addition, the qualified individual should

- Be technically competent in routine geotechnical matters and have a complete understanding of geologic factors which affect engineering design
- Have excellent communication skills (written and verbal)
- Have strong computer skills - Word, Excel, and Google Earth
- Be able to organize priorities and multi-task effectively in a team environment and play well with others
- Have a BA/BSc in Geology plus a minimum of 5 years project-level experience

Must have Professional Geologist Registration for State of California

Certified Engineering Geologist for State of California is preferred but not required

Salary commensurate with experience. Please email resumes to info@gei-sd.com

Vacancy in the Site Restoration and Agricultural Program Unit

The San Diego Water Board, part of the California Environmental Protection Agency, has an opening for a full-time Engineering Geologist position in San Diego. The position involves a wide range of geological work and projects throughout a large area of Southern California. Get your applications in now for this exciting opportunity to work with other environmental professionals to protect and restore our natural resources.

Complete applications are due February 19, 2020. Get started now and the first step is to make sure you are on the eligibility list by taking the “exam” here:

<https://www.jobs.ca.gov/CalHrPublic/Exams/Bulletin.aspx?examCD=8PB70>

All the information about the position and how to apply is here:

<https://www.calcareers.ca.gov/CalHrPublic/Jobs/JobPosting.aspx?JobControlId=189049>



SNAPNHD

SnapNHD is looking to hire an experienced geologist to review our natural hazard disclosure report and act as an ongoing advisor to the company. If you are interested in learning more, please contact will@snapnhd.com. A sample report can be found here: [Sample Report](#)

PHOTOS OF THE MONTH

If you would like to submit a photo, email them to secretary@sandiegogeologists.org and I will try and put them in the newsletter. Provide a short description of the picture.



Photo is from the SDAG Potato Chip Rock One Stop Wonder. Scale provided by semi-willing geologists who were not harmed in the shooting of this photograph.



Hargis + Associates, Inc. is an environmental consulting firm specializing in hydrogeology and engineering. We are headquartered in San Diego, California and have offices in Mesa and Tucson, Arizona. Our practice areas include all aspects of hydrogeology and engineering.

As a client service organization, we pride ourselves in being attentive and efficient in meeting our client's needs and solving their problems. In addition to our technical expertise, communication and responsive coordination are hallmarks of our reputation.

We invite you to explore our website to learn more about our firm and the services we provide. We welcome the opportunity to discuss our consulting expertise directly with you.

Contact: Dr. David R. Hargis



H&P Mobile Geochemistry is an industry-leading provider of environmental lab services. With ten mobile labs and five direct push sampling trucks and unparalleled experience, H&P's repertoire of environmental lab services includes many forms of environmental lab sampling techniques all the way to on site field analysis services. H&P has successfully and accurately performed environmental lab services delivering quality results to our clients for over 16 years.

2470 Impala Dr., Carlsbad, CA 92010
(800) 834-9888

Contact: Louise Adams or Suzie Nawikas

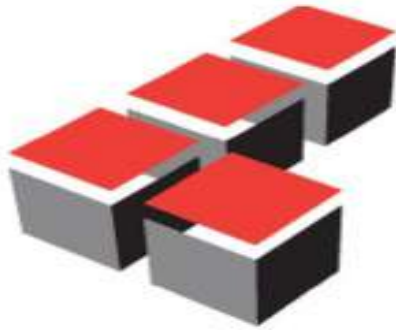


Contact: Rupert Adams, CEG

Geocon Incorporated
6960 Flanders Drive, San Diego, CA 92121
P | 858.558.6900

San Diego / Riverside County / Palm Desert / Los Angeles /

Orange County / Bakersfield / Bay Area / Fairfield / Sacramento



Leighton

Leighton is a multidiscipline engineering firm, providing geotechnical, environmental, and testing and inspection services. Founded in 1961, Leighton provides engineering solutions to public agencies, property owners, and facilities. With offices located in San Diego, Irvine, Los Angeles, Temecula, Rancho Cucamonga, Palm Desert, Santa Clarita, Ventura, and Bakersfield, we efficiently service any region of Southern California. Our professional staff of Registered Geotechnical Engineers, Professional Geologists and Certified Engineering Geologists, Registered Hydrogeologists, and Registered Environmental Assessors and Certified Inspectors provide decades of local experience for the successful completion of your projects.

For additional information, please contact Bob Stroh (rstroh@leightongroup.com)

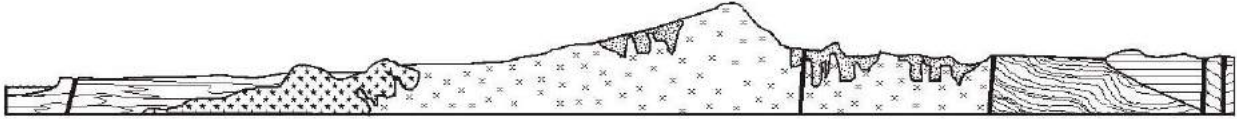
Website link: <http://www.leightongroup.com>

- [Dr. Pat Abbott](#) — SDSU Professor of Geology, Emeritus
- Lowell A. Lindsay & Diana Lindsay — [Sunbelt Publications/AESE](#)
- Marty and Sherry Bloom
- Cari Gomes — [Pinao Consulting](#)
- Dan Gomes — CAVU Brewing
- Joe Coronas
- Dr. Monte Marshall—SDSU Prof. of Geology & Geophysics, Emeritus
- Greg Cranham — Consulting Geologist
- Jennifer Morton — [Terramar Environmental](#)
- Dr. Margaret R. Eggers, CHG — [Eggers Environmental, Inc.](#)
- Monte and Diane Murbach — [Murbach Geotech](#)
- Karen Evans for Jim Evans (Deceased)
- Peet's Coffee and Tea Solana Beach
- Starbucks—Devore/San Bernardino
- Phil Farquharson — [Geology Guy](#)
- Pure Wine, Inc. - www.drinkpurewine.com
- Carolyn Glockhoff — [Caro-Lion Enterprises](#)
- Gerald Shiller
- Rob Hawk
- [Scott Snyder](#)
- Tom Lamb
- David and Jan Steller

Dr. Anne Sturz

- Carole L. Ziegler
- Pacific Drilling — Tod Clark <http://www.pacdrill.com/>
- Vic Camp
- Mary Walke
- Doug & Betty Moran
- Woody Higdon — Geotech Imagery Intl.

Add yourself to this list - Sponsors, Corporate Sponsors, and Patrons provide a significant portion of SDGS's and SDAG's operating and scholarship budgets. SDGS is a 501(c)3 public benefit nonprofit educational corporation. For more information, please see our Sponsorship Form <http://www.sandiegoengineers.org/SponsorForm.pdf>.



SAN DIEGO ASSOCIATION OF GEOLOGISTS

www.sandiegoeologists.org

2020 MEMBERSHIP FORM

NAME: _____ DATE: _____

Please type or print clearly.

Home Address: _____

Work Address: _____

Please include company, university or other affiliation

Home E-mail Address: _____

Work E-mail Address: _____

NOTE: Your membership dues include delivery of the monthly SDAG newsletter and announcements to the email addresses given.

Phone: Home: _____ Work: _____ Cell: _____

Website: _____

Are you willing to serve as an **officer**? _____ Are you willing to volunteer as a **guest speaker**? _____

Field(s) of Interest: _____

Dues: _____ Student Member (email delivery only) \$ 5.00

(check choice) _____ Regular Member (email delivery only) \$ 25.00

_____ Donation Student Scholarships \$ _____

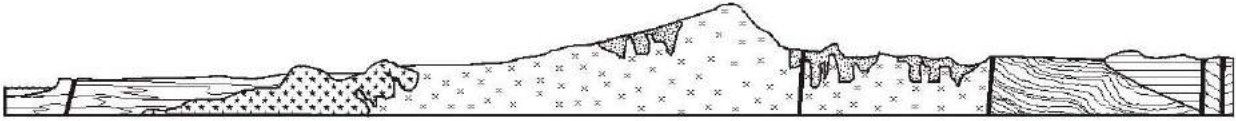
New/Returning Member Continuing Member

Please enclose a check payable to SDAG, and mail to:

San Diego Association of Geologists (SDAG)

3130 N Evergreen Street

San Diego, CA 92110



**SAN DIEGO ASSOCIATION OF GEOLOGISTS
2020 SPONSORSHIP FORM**

NAME: _____ **DATE:** _____
(as you would like it to appear in Newsletter, Website, and Guidebook)

Please type or print clearly, and check preferred mailing address below.

Residential Address: _____

Office/School Address: _____

Website: _____

Home E-mail Address: _____

Work E-mail Address: _____

NOTE: Your Sponsorship includes a complimentary SDAG membership, and delivery of the monthly SDAG newsletter and announcements to the email addresses given.

Phone: Home: _____ Work: _____ Cell: _____

Donation Level and Consideration:

EMERALD \$100.00 (In addition to monthly recognition for your contribution, you are entitled to a free Internet "link" from SDAG Website. We also list all Sponsors in any publications printed this year)

RUBY \$500.00 (In addition to the above, you are entitled to an image of your business card in the monthly newsletter and SDAG Website)

DIAMOND \$1,000.00 (In addition to the above, you will receive a commemorative plaque in recognition for your most generous support of the organization)

New Member / Donor Continuing Member Change of mailing address:

Are you interested to serve as an officer? _____ Willing to volunteer as a guest speaker? _____

Please make check payable to San Diego Geological Society, Inc., a 501(c)3 public benefit nonprofit educational corporation (in order to claim a tax deduction), and mail to:

San Diego Geological Society, Inc.
3130 North Evergreen St.
San Diego, California 92110 **Thank you!**

*Donations may also be made
at monthly meetings.*