

# **SAN DIEGO ASSOCIATION OF GEOLOGISTS**

<http://www.sandiegogeologists.org>

---

## **SDAG MEETING ANNOUNCEMENT**

---

**Wednesday, June 26<sup>th</sup>, 2019 \*4<sup>th</sup> Wednesday\***

### **Recovering our Future - The Past, Present, and Future of Coastal Wetlands**

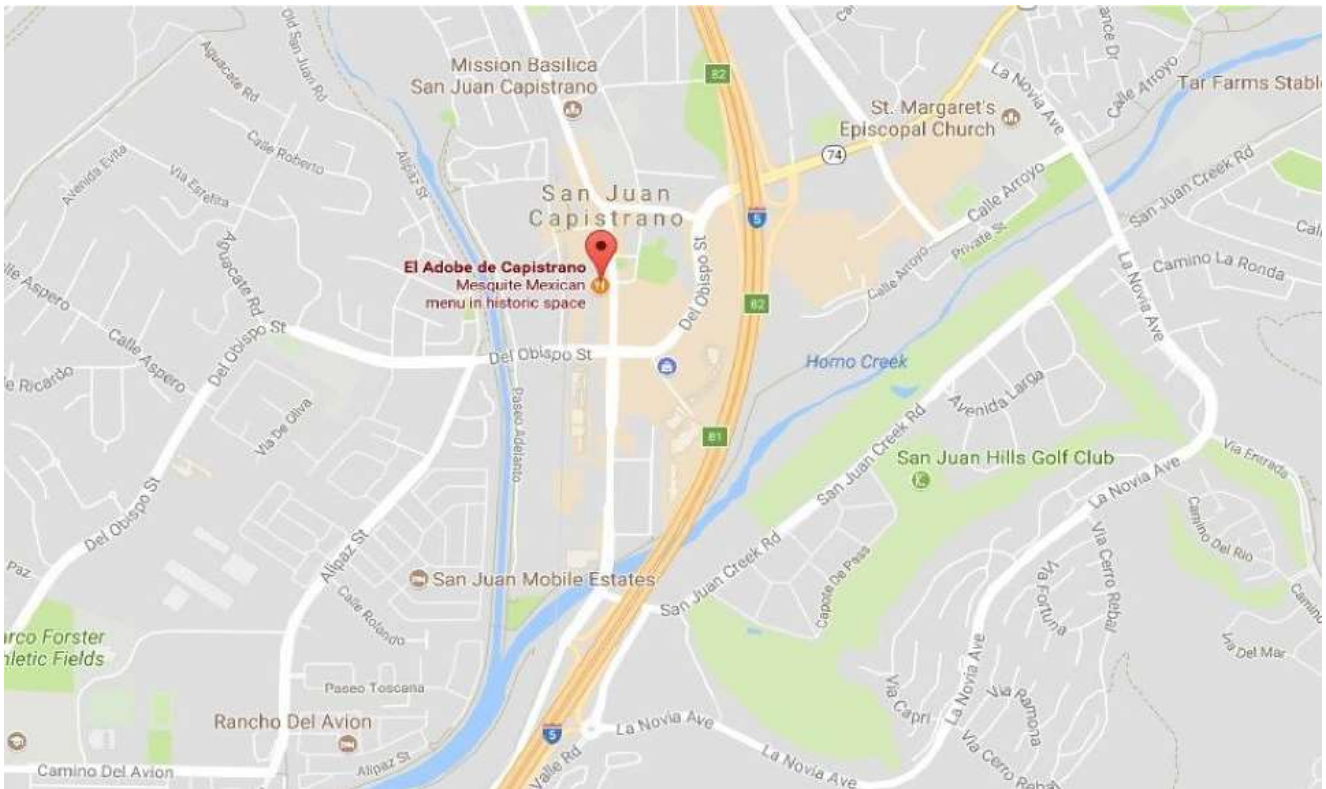
Presented by: **Dr. Holland & Dr. Whitcraft - CSU Long Beach**

***\*Joint Meeting with SCGS\****

- Where:** **El Adobe Restaurant**  
31891 Camino Capistrano  
San Juan Capistrano, CA 92675 (See Map)
- When:** 6:00 pm – Social Hour  
7:00 pm – Dinner  
8:00 pm – Presentation
- Dinner:** Mexican Dinner with Cash Bar
- Cost:** \$40 Member, \$45 Non-Member, \$25 Students.
- Reservations:** Make your reservation **online** at <http://www.sandiegogeologists.org/Meetings.html> **no later than noon, Friday June 21, 2019**. Reservations cannot be guaranteed after Friday at noon, but are always preferred over walk-ins. **EARLY reservations well before the deadline are MUCH appreciated.**

**Directions:**     **FROM INTERSTATE 5:** Take the CAMINO CAPISTRANO exit and turn left onto VALLE ROAD. Take the next left onto SAN JUAN CREEK ROAD and then next right onto CAMINO CAPISTRANO. The restaurant is half a mile up on the left hand side.

**Map:**



---

## ***ABSTRACT***

---

Learn how California wetlands and lagoons have historically been, and continue to be, highly “stressed out”. Drs. Holland and Whitcraft will explain how humans have affected the health and structure of wetlands, reducing the quantity and quality of these prized habitats. But the story is not all bad—in addition to negatively affecting the environment, humans have learned how to mitigate for these stresses and restore these habitats.

---

## ***SPEAKER BIOS***

---

**Dr. Erika Holland**, an assistant professor of aquatic toxicology in the Department of Biological Sciences, focuses her research on the impacts of pollution in the environment working across areas of pollutant detection, molecular biology, organism behavior or ecology. Holland’s ongoing projects include developing cellular tools to identify and describe harmful chemicals, addressing the health of oysters in Newport Bay and understanding the presence and risk of debris, namely plastics, in southern California waters. Holland grew up in northern New Mexico, hiking the mesas outside the rural city of Aztec, and received her B.S. degree from San Diego State University and doctorate of Philosophy in Pharmacology and Toxicology, working in Isaac Pessah’s laboratory at University of California, Davis.

**Dr. Christine Whitcraft** is an associate professor in the Department of Biological Sciences and Director of the Environmental Science and Policy Program. Born and raised in Maryland, her major area of interest is coastal wetland ecology, focusing on the impact of anthropogenic activities on functioning of brackish and salt marshes. Specifically, Whitcraft investigates restoration strategies, impacts of invasive plants and climate change-related impacts. Additional research interests include invertebrates in oxygen minimum zone habitats and foraging behavior of California Least Terns. She received her B.A. in Biology from Williams College, Williamstown MA, and Ph.D. in Biological Oceanography from University of California, San Diego, and Scripps Institution of Oceanography. Her postdoctoral research was a CALFED position at San Francisco Bay National Estuarine Research Reserve until she started at CSULB in 2008.

---

## **UPCOMING MEETINGS**

---

Meetings are usually held on the 3<sup>rd</sup> Wednesday of the month may change to accommodate the speaker and meeting place schedules. Check the SDAG website for updates

July 17, 2019 Best Western – Seven Seas	Diana Lindsay “Anza-Borrego’s Sister Park in Mongolia”
August 28, 2019 *4 <sup>th</sup> Wednesday* Geocon, Inc.	Rob Hawk
September 2019	NO MEETING (Field Trip September 27 – 29)

---

## **2019 SDAG EXECUTIVE COMMITTEE**

---

<b><u>PRESIDENT:</u></b>	Ken Haase; <a href="mailto:haase@geoconinc.com">haase@geoconinc.com</a>
<b><u>VICE PRESIDENT:</u></b>	Adam Avakian; <a href="mailto:armenianmenace1@gmail.com">armenianmenace1@gmail.com</a>
<b><u>SECRETARY:</u></b>	<a href="mailto:secretary@sandiegogeologists.org">secretary@sandiegogeologists.org</a>
<b><u>TREASURER:</u></b>	Luke Weidman; <a href="mailto:lcweidman@gmail.com">lcweidman@gmail.com</a>
<b><u>PUBLICATIONS:</u></b>	Lowell Lindsay; <i>Sunbelt Publications</i> ; Ph: (619) 258-4911, x111; <a href="mailto:llindsay@sunbeltpub.com">llindsay@sunbeltpub.com</a>

---

## ***SDAG PRESIDENT'S CORNER***

---

Greetings SDAG!

As the weather finally warms up, be sure to always prepare for the elements while exploring cool geology this summer. If anyone would like to highlight local geology, we can set up a One Stop Wonder to showcase what you have!

Our June meeting brings our annual joint meeting with SCGS and we will be back at the El Adobe in San Juan Capistrano on Wednesday June 26<sup>th</sup> (the 4<sup>th</sup> Wednesday!). Dr. Whitcraft and Dr. Holland from CSU Long Beach will be presenting "Recovering our Future - The Past, Present, and Future of Coastal Wetlands." You can sign up on the website!

There are also sponsorship opportunities for the June meeting. \$125 gets you a dinner and a PowerPoint slide during happy hour. \$300 gets you a dinner, a PowerPoint slide and a 3 minute presentation during announcements. These sponsorships are tax deductible and help with costs for members and students! Email me at [haase@geoconinc.com](mailto:haase@geoconinc.com) if you are interested.

I would like to thank Heather Reynolds our secretary for her service to SDAG. She is moving away and will not be finishing out her SDAG time. Best of luck Heather! If anyone is interested in filling in her spot let me know!

Our 2019 Field Trip sign-up forms are attached to this announcement email. Looks to be a great trip Adam has prepared, get those sign-ups in!

See everyone on June 26<sup>th</sup> in San Juan Capistrano!

Sincerely,

Ken Haase  
Geocon, Inc.  
2019 SDAG President  
[haase@geoconinc.com](mailto:haase@geoconinc.com)

---

## **ANNOUNCEMENTS**

---

# ONE-STOP WONDER CHALLENGE!

ONE OSW A MONTH IN 2019!

BE A PART OF SDAG HISTORY!

Have an idea for a one-day or half-day field trip?

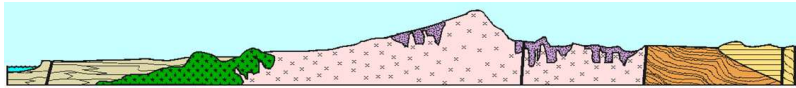
Want to share your favorite aspect of San Diego  
geology?

Contact SDAG to schedule your One-Stop  
Wonder!

Your OSW may be chosen to be included in SDAG's One Stop  
Wonder Guidebook!

Contact Monte Murbach for scheduling!

[montemurbach@gmail.com](mailto:montemurbach@gmail.com)



## **SDAG Field Trip 2019**

### **OWENS VALLEY AND EASTERN SIERRAS**

This year's trip will take us up Highway 395 through the Owens Valley and along the Eastern Sierras. The trip will take place from **September 27 to 29, 2019** (Fri, Sat, Sun). We will be camping both nights at the Pleasant Valley Campground located about 8 miles WNW of Bishop. The trip will be planned as a full day Friday and Saturday and a half day Sunday. The trip will be focused on stops between Lone Pine and Convict Lake (exploring approx. 95 miles of the valley). Being in the rain shadow of the Eastern Sierras, the geologic exposures in this region are excellent and the diversity of the geologic features are second to none. We will be discussing and putting our hands on fault scarps, volcanic deposits (basalt flows and rhyolite tuffs), glacial moraines and other unique evidence of the geomorphology of the Owens Valley and Eastern Sierras. The map on Page 4 of the Sign-Up packet (see PDF attached to the announcement email) show a preliminary schedule of stops with the day of the field trip in parentheses. The itinerary is being refined and you don't want to miss this trip! The Owens Valley is a California gem that all geologists must experience at least once in their lifetime. For those not interested in camping, hotel accommodations in the Bishop area are available but are not included in the registration cost and must be reserved independently. We have 17 camp sites reserved for the trip. Each camp site is allotted 6 people and 2 vehicles (carpooling is critical for this trip!). A couple of these camp sites can accommodate an RV or trailer so please let me know if you plan on bringing either an RV or trailer as space is limited. The campground is located in beautiful meadow lands at the mouth of the Owens River Gorge. The river meanders through the campground with scenic views of the Eastern Sierras and White Mountains. The local fishing is quite good and you can literally cast a line from your tent! Fishing is **catch and release only**, so come prepared with the right equipment if you do plan on fishing in the morning or evening. It is your own responsibility to have a fishing license and abide by the local fishing laws. I can't wait for this trip and am excited to see everyone there! Also you can submit your reservation form during a meeting (paying by credit card with \$5 fee, cash or check) or you can mail in your reservation form and check to myself (Adam Avakian). See the PDF attached to the announcement email for more details.

Cheers!

Adam Avakian

2019 SDAG Vice President

[Adam.avakain@dot.ca.gov](mailto:Adam.avakain@dot.ca.gov)

619-643-3122

---

## ONE STOP WONDER ANNOUNCEMENT

Our next OSW takes us to Black Mountain in Carmel Valley on June 22<sup>nd</sup>.

**Date:** Saturday June 22, 2019

**Time:** 9:00 am

**Location:** Black Mountain Miner's Ridge Trail

**Directions:** -From Interstate 15, head west on Bernardo Center Drive Bernardo Center Drive turns into Carmel Valley Road. Just past Valle Del Sur, turn left into the entrance for Black Mountain Open Space Park, Miner's Ridge Loop.

-From Interstate 5, head east on Highway 56. Exit Camino Del Sur and head north. Turn right on Carmel Valley Road. Pass the first driveway and then turn right into the entrance for Black Mountain Open Space Park, Miner's Ridge Loop.

The parking lot is up the hill and is also our meeting spot!

We will have a short hike on the Miner's Ridge Trail and discuss the Santiago Peak Volcanics and associated mining history!





---

The EERI San Diego Chapter invites you to two exciting events this August, a short course on seismic analyses tools and the second Kenji Ishihara Colloquium, happening on the beautiful campus of San Diego State University!

**Short course on USGS Software Tools, August 21:** Drs. Nicolas Luco, Peter Powers, and **Jorge Meneses** (M.EERI,2016) will present on various USGS web-based interactive tools available for site-specific ground motion hazard analysis. For more information, please click [here](#).

**The second Kenji Ishihara Colloquium, August 22-23:** With a theme of “Seismic Lateral Displacements,” this year’s event includes an extraordinary lineup of geotechnical and structural engineering speakers from USA, Japan, and Chile. We’ve confirmed several prestigious speakers and will continue to add others. Click [here](#) for a list of speakers, their bios, and abstracts. At the colloquium, we’ll also honor the lifetime contributions and achievements of Prof. T. Leslie Youd, Professor Emeritus, Brigham Young University with a gala dinner on August 22.

For more information and to register, please click [here](#).

We look forward to seeing you all in beautiful San Diego!

---

---

## Support SDAG/SDGS using AmazonSmile



### What is AmazonSmile?

AmazonSmile is an automatic way for you to support the **“San Diego Geological Society”** (SDGS) SDAG’s 501(c)(3) as your favorite public charitable organization every time you shop on Amazon at no cost to you at [smile.amazon.com](https://smile.amazon.com).

### How do I select a charitable organization to support when shopping on AmazonSmile?

On your first visit to AmazonSmile [smile.amazon.com](https://smile.amazon.com), you need to select a charitable organization to receive donations from eligible purchases before you begin shopping. Please select the **San Diego Geological Society**. Amazon will remember your selection, and then every eligible purchase you make at [smile.amazon.com](https://smile.amazon.com) will result in a donation to SDGS (SDAG).

### How much of my purchase does Amazon donate?

The AmazonSmile Foundation will donate 0.5% of the purchase price from your eligible AmazonSmile purchases.

### How can I learn more about AmazonSmile?

Please see complete AmazonSmile [program details](#).

---

## SDAG Research Tool

**SDAG RESEARCH TOOL** - A comprehensive listing of all papers published by SDAG, whether as annual field trip guidebooks or special publications, is now available on our website. Entries are sorted by primary author, or chronologically by date of publication, starting with our first guidebook in 1972, from Coast to Cactus in 2014, and finally on the Julian 'Road to Gold' in 2017. These can be accessed or downloaded as .pdf files. They are fully searchable in Adobe Reader or Acrobat, so if you are researching a topic, "oikocryst" for example, you can search for that keyword. This listing will be updated as new books are published. Thanks to Greg Peterson and Hargis + Associates, Inc., for making this possible. See the links below:

[http://www.sandiegogeologists.org/SDAG\\_Pubs\\_authors.pdf](http://www.sandiegogeologists.org/SDAG_Pubs_authors.pdf)

[http://www.sandiegogeologists.org/SDAG\\_Pubs\\_chronological.pdf](http://www.sandiegogeologists.org/SDAG_Pubs_chronological.pdf)

---

---

## **Interactive Fault Map for San Diego - Tijuana**

As part of the update for the San Diego-Tijuana Earthquake Planning Scenario, Working Group No. 1's "Fault Map Subcommittee" completed the first publicly available bi-national active and potentially active fault map ([http://sandiego.eeri.org/?page\\_id=265](http://sandiego.eeri.org/?page_id=265)). This interactive GIS map includes the first publicly available active and potentially fault map locations from the City of San Diego. The map also integrated the faults south of the border for a bi-national cross border view. This map is an on-going project as our knowledge increases about local active and potentially active faults.

You can expand the map legend on the left side to select layers that can be turned on or off for the map view. You can also select from 1 of 12 base maps at the base map icon. You can click on the fault line in your map layer view to see the meta-data source. In addition, the City of San Diego Seismic Safety Study Geologic Hazards & Faults Maps are available in the layer titled "GeoHaz SD City." Please note that the City "Zone 12 Potentially Active" fault layers was not included in this data, therefore you will need to use the City Maps to find Zone 12.

The Fault Map link is available at: [http://www.sandiegogeologists.org/Faults\\_map.html](http://www.sandiegogeologists.org/Faults_map.html)

Please contact Diane Murbach ([dianemurbach@gmail.com](mailto:dianemurbach@gmail.com) 619-865-4333), Chair for the SDTJ Earthquake Scenario Working Group #1 - Earth Science, if you have any questions, or see any errors on this new fault map.

I would like to thank Carolyn Glockhoff for her endless GIS work, Jim Quinn and the City for providing their data and time, Jerry Treiman with CGS for his time preparing the Surface Rupture and providing their new State fault data layer, and Luis Mendoza at CICESE for providing the faults south of the border. Please contact Diane Murbach ([dianemurbach@gmail.com](mailto:dianemurbach@gmail.com)), Chair for the SD-TJ Earthquake Scenario Working Group #1 - Earth Science, if you have any questions, or see any errors on this new fault map.

**Diane Murbach** (619) 865-4333

Engineering Geologist, C.E.G.

[www.murbachgeotech.com](http://www.murbachgeotech.com)

---

## Request for 2019 SDAG/SDGS Publication Sponsors

On behalf of the San Diego Geological Society, Inc. (SDGS), a public benefit 501(c)3 nonprofit educational corporation, we would like to request tax deductible Donations for our San Diego Association of Geologists (SDAG) group. The list of paid Sponsors and the forms to become a Sponsor are located on the SDAG web site at: <http://www.sandiegogeologists.org/Sponsors.html>.

Your donation will further the SDGS mission to promote geology and related fields in the greater San Diego region, operating through the San Diego Association of Geologists (SDAG), a committee of SDGS. To achieve our primary educational objective, we organize frequent field trips and maintain a program of monthly meetings featuring speakers on current geological topics. We also publish field trip guidebooks and other publications related to geology and natural history. We encourage scholarship and research by awarding scholarships from the elementary through graduate levels. With your \$100 "EMERALD" donation, your name/business will be listed as a sponsor on the SDAG web site (<http://www.sandiegogeologists.org/>) and in the monthly SDAG meeting newsletters. With your \$500 "RUBY" or \$1,000 or more "DIAMOND" level donation, your business card will also be included on the SDAG web site and in the monthly SDAG meeting newsletters. In addition, as a "\$1,000 or more DIAMOND" level donation you will be presented with a thank you plaque.

Should you have any questions regarding a Sponsorship, please contact our non-profit SDGS Secretary (Diane Murbach) at 619-865-4333.

---

## Call for Articles

SDAG invites members to submit articles on their current research or an interesting project they are working on for publication in the monthly newsletter. The article should be no more than 1 page in length. Photos are welcomed; too. Please submit articles to the SDAG secretary via email.

---

---

# Geo Job Listings

---

## Project Geologist Wanted

R. T. Frankian & Associates, Inc.

R. T. Frankian & Associates, Inc., a geotechnical engineering and engineering geology consulting firm since 1963, seeks a qualified individual for Project Geologist position. This position is to work on medium to large size land development-type projects, as well as to develop work within the public sector. The successful candidate must meet the following criteria.

The Project Geologist must -

- Possess BS/BA in Geology, with classes in geologic field mapping, stratigraphy/sedimentology, and structural geology
- Have 1-3 years experience in hillside grading in L. A. County or Southern California
- Be able to perform downhole boring logging, test pit logging, field supervision, slope stability analysis
- Be able to assist CEG with various aspects of land planning and development projects, **especially** field-related aspects
- Be willing to work in various aspects of the job (field, office, and as needed inspection)
- Possess excellent written and verbal communication skills, as well as excellent interpersonal skills
- Being a PG in the State of California is preferred but not required

## Senior Engineering Geologist Wanted

R. T. Frankian & Associates, Inc.

R. T. Frankian & Associates, Inc., a geotechnical engineering and engineering geology consulting firm since 1963, seeks a qualified individual for the Senior Engineering Geologist position. This position is to work on medium to large size land development-type projects, as well as to develop work within the public sector. The successful candidate must meet the following criteria.

The Senior Engineering Geologist must -

- Possess BS/BA in Geology, with classes in geologic field mapping, stratigraphy/sedimentology, and structural geology
- Have 3-5 years experience in hillside grading in L. A. County or Southern California
- Be able to perform downhole boring logging, test pit logging, field supervision, slope stability analysis
- Possess excellent written and verbal communication skills, as well as excellent interpersonal skills
- Be willing to work in various aspects of the job (field, office, and as needed inspection)
- Be a CEG in the State of California

R. T. Frankian & Associates, Inc., offers a competitive salary, commensurate with experience and abilities, and a benefits package.

Email resumes to [resumes@rtfrankian.com](mailto:resumes@rtfrankian.com).

---

**GEI Consultants, Inc.** is a leading consulting engineering and environmental firm ranked #92 in the ENR top 500 (2018), with over 800 employees in multiple offices throughout the U.S. and Canada. We serve hundreds of government, energy, industry and institutional clients, and have completed 50,000 project engagements throughout the United States, Canada, and more than 20 other countries. Our technical experts are involved in dozens of specialty services emanating from our core solutions in water, energy, buildings, infrastructure and industrial.

We are seeking a full-time **Senior Engineering Geologist** for our Carlsbad, CA office. Experience in geologic investigations for dams and other water infrastructure projects is a plus.

**Essential Responsibilities & Duties**

- Manage the technical, financial, and client relationship aspects of a variety of geologic/geotechnical engineering projects throughout the country, with a geographic emphasis in California.
- Prepare technical scopes of work and budgets for proposals, and prepare requests for proposals for subcontractor services.
- Plan and lead the implementation of geologic/geotechnical site assessments and subsurface investigations, which include: field mapping, aerial photograph interpretation, rock and soil borings, surface and downhole geophysics, LiDAR analysis, preparation of technical reports, and providing technical oversight of subcontractors including review/approval of invoices and work proposals.
- Participate actively in professional organizations and conferences; deliver presentations, and write technical papers.
- Generate new business.
- Prepare and deliver technical presentations to clients and regulators.
- This position has a field component; travel, and some overnight travel are required.

**Minimum Qualifications**

- B.S. in Geology; M.S. is a plus.
- P.G. and C.E.G. with registration in California.
- 10+ years of previous professional experience in engineering geology.
- Excellent technical report writing and communication skills.
- Willingness and ability to travel on short-term assignments as needed.
- Valid U.S. driver's license.

GEI is an EEO/AA/M/F/Vet/Disability employer

Apply here: <https://jobs.ourcareerpages.com/job/396913>

For other opportunities within GEI, go to: <https://geiconsultantsinc.ourcareerpages.com/>

---

---

**Trevet** is an Environmental and Engineering Consulting Firm headquartered in San Diego, CA. We are seeking a **full-time staff level Geologist or Environmental Scientist**. Two to five years of experience preferred. At a minimum a bachelor's degree in geology, engineering, or a related scientific discipline is required. Must be eligible to work in the United States, and on Department of Defense installations. Ability to travel for extended duration (2 to 3 weeks) is required. The ideal candidate will possess great attention to detail, excellent written and verbal communication skills, and ability to work independently and within a team.

Duties will include a combination of field and office related tasks.

**Field experience should include:**

- Installation of soil borings using multiple drilling methods
- Describing soil using the USCS and ASTM classification systems
- Installing and abandoning groundwater monitoring wells
- Field sampling of groundwater, soil, and soil gas
- Remediation system operation and sampling

Field work may be performed at project sites with environmental media (e.g., soil, sediment, groundwater, surface water, etc.) that has been impacted with hazardous substances and/or hazardous wastes.

**Office experience should include:**

- Field data collection, analysis, and interpretation
- Preparation of data in visual, graphical, and tabular formats
- Technical report writing

**Other Requirements**

Familiarity with CERCLA/RCRA requirements

OSHA 40-Hour HAZWOPER Training with current 8-hour refresher class preferred.

Trevet is an Equal Opportunity Employer

**Please apply at**

<http://www.trevetinc.com/>

---





## Entry-Staff Hydrogeologist

### OVERVIEW:

Hargis + Associates, Inc. (H+A) is an environmental consulting and engineering firm founded in 1979 with a commitment to providing high-quality, cost-effective services for our clients. We are headquartered in San Diego and have offices in Sacramento, CA, and Phoenix and Tucson, AZ. Our practice focuses on large facility investigation and remediation projects for Fortune 500 clients where we provide responsive, practical and innovative solutions for the treatment of soil, vapor and groundwater contamination. H+A also provides hydrogeologic and engineering services for groundwater resources assessment, stormwater management, and environmental regulatory and litigation support. H+A employs a staff of approximately 60 hydrogeologists, geologists, engineers, industrial hygienist, and project support personnel.

We are currently seeking an entry-staff level hydrogeologist to join our San Diego office supporting environmental investigation and remediation projects located throughout Southern California. These projects are primarily focused on the characterization and remediation of soil, vapors, and groundwater impacts at large industrial sites. In addition to implementing fieldwork for site investigations, the position will also involve data entry, interpretation, and technical report writing for various soil and groundwater monitoring programs.

### RESPONSIBILITIES:

- Implement/and support field investigations for soil sampling, groundwater sampling, borehole drilling, and well installations.
- Complete tasks requiring utilization of critical-thinking skills, scientific, geologic, and engineering analytical techniques.
- Assist in the preparation of reports, work plans, sampling and analysis plans, remedial investigation reports, and groundwater monitoring reports under the direction and guidance of a Senior Geologist/Engineer/Scientist.
- Follow corporate health and safety and quality management plan standards.

### REQUIREMENTS:

- BS degree in geology, hydrogeology or related technical discipline is required.
- 1-3 years of field experience in environmental consulting is preferred.
- Experience with geologic, engineering, scientific, or general environmental projects and data interpretation.
- Field experience with drilling, sampling (soil and groundwater), and well installations is a plus.
- OSHA 40-hr. HAZWOPER, current refresher preferred; training provided.
- General computer knowledge (Microsoft Office, Email); GIS and other environmental software experience is a plus.
- Excellent organizational and sound written/oral communication skills.
- Local candidates only; must be eligible to work in the United States.

### PHYSICAL DEMANDS:

- Ability to drive, travel and/or perform field work approximately 50% of the time; some overnight and extended travel.
- Ability to lift 45 pounds.
- Must be able to perform the following actions while conducting fieldwork: stooping/kneeling/crouching, standing for long periods of time, pulling/pushing and lifting equipment and supplies, walking on uneven terrain.
- Ability to work in outdoor environments and hot/arid conditions.
- Ability and willingness to work long hours and in proximity to loud noises and hazards (i.e., proximity to moving mechanical parts, moving vehicles, and exposure to chemicals, fumes, odors, dusts, and gases).

Those who seek to apply may submit a cover letter and resume via email to [hargisinfo@hargis.com](mailto:hargisinfo@hargis.com)

**All qualified applicants will receive consideration for employment without regard to race, color, national origin, ancestry, sex, gender, gender identity, gender expression, age, sexual orientation, religious creed, physical or mental disability, medical condition, genetic information, marital status, veteran status, or any other classification protected by applicable federal, state, or local law.**

---

**MP Materials, Mountain Pass, CA**

Seeking Industrial Hygienist/Radiation Safety Officer

Please contact:

Chris Baker  
Senior Environmental Specialist  
m: 562.331.4507  
[cbaker@mpmaterials.com](mailto:cbaker@mpmaterials.com) | [www.mpmaterials.com](http://www.mpmaterials.com)

---

---

## PHOTOS OF THE MONTH

If you would like to submit a photo, email them to [secretary@sandiegogeologists.org](mailto:secretary@sandiegogeologists.org) and I will try and put them in the newsletter. Provide a short description of the picture.



**Hakone Volcano, Owakudani, Japan**

Owakudani is the area around a crater created during the last eruption of Hakone, a stratovolcano, some 3000 years ago in Japan. Mount Kamiyama collapsed forming Owakudani and Lake Ashinoko, and Mount Kanmurigatake. The Owakudani area has good views of Mount Fuji on clear days and remains an active volcanic zone with sulfurous fumes, hot springs and hot rivers. At Owakudani you can purchase eggs, cooked in the naturally hot water, whose shells are blackened by the sulfur and are said to prolong one's life by seven years.



The Owakudani area was open to tourists when we visited in April 2019, however about a month later the area was closed due to an increased possibility of an eruption. Assuming the area reopens in the future, you can visit the Hakone Geomuseum in Owakudani, which is located virtually in the center of Hakone Volcano. Based in Hakone Geopark, the Hakone Geomuseum offers interesting information and a variety of fun exhibits. The Japanese Geoparks are natural parks notable for distinctive natural environments and history created through geologic activity.

By Diane Murbach



**HARGIS+ASSOCIATES, INC**  
HYDROGEOLOGY • ENGINEERING

Hargis + Associates, Inc. is an environmental consulting firm specializing in hydrogeology and engineering. We are headquartered in San Diego, California and have offices in Mesa and Tucson, Arizona. Our practice areas include all aspects of hydrogeology and engineering.

As a client service organization, we pride ourselves in being attentive and efficient in meeting our client's needs and solving their problems. In addition to our technical expertise, communication and responsive coordination are hallmarks of our reputation.

We invite you to explore our website to learn more about our firm and the services we provide. We welcome the opportunity to discuss our consulting expertise directly with you.

Contact: **Dr. David R. Hargis**



# Mobile Geochemistry Inc.

H&P Mobile Geochemistry is an industry-leading provider of environmental lab services. With ten mobile labs and five direct push sampling trucks and unparalleled experience, H&P's repertoire of environmental lab services includes many forms of environmental lab sampling techniques all the way to on site field analysis services. H&P has successfully and accurately performed environmental lab services delivering quality results to our clients for over 16 years.

2470 Impala Dr., Carlsbad, CA 92010  
(800) 834-9888

Contact: **Louise Adams or Suzie Nawikas**



Tetra Tech is a leading provider of consulting, engineering, and technical services worldwide. We are a diverse company, including individuals with expertise in science, research, engineering, construction, and information technology. Our strength is in collectively providing integrated services—delivering the best solutions to meet our clients' needs.

<http://www.tetrattech.com>



Contact: **Rupert Adams, CEG**

**Geocon Incorporated**  
6960 Flanders Drive, San Diego, CA 92121  
P| 858.558.6900

*San Diego / Riverside County / Palm Desert / Los Angeles /  
Orange County / Bakersfield / Bay Area / Fairfield / Sacramento*



**EXCAVATING,  
DEMOLITION, BREAKERS**

Atlas Excavating & Breakers has been providing operated equipment rentals and excavating services to contractors & geologists in San Diego and Riverside counties since 1991. We offer Mini Ex., 4x4 Backhoe & large excavators up to 75,000 pounds. "40 Hour Haz Whopper" trained operator. Asphalt/concrete removal & replacement.

Contact: **Barry Anderson**

**760-754-1337**



**858-275-6454**

**Trevet is a San Diego-based environmental engineering and consulting 8(a)-certified small business enterprise.**



Leighton is a multidiscipline engineering firm, providing geotechnical, environmental, and testing and inspection services. Founded in 1961, Leighton provides engineering solutions to public agencies, property owners, and facilities. With offices located in San Diego, Irvine, Los Angeles, Temecula, Rancho Cucamonga, Palm Desert, Santa Clarita, Ventura, and Bakersfield, we efficiently service any region of Southern California. Our professional staff of Registered Geotechnical Engineers, Professional Geologists and Certified Engineering Geologists, Registered Hydrogeologists, and Registered Environmental Assessors and Certified Inspectors provide decades of local experience for the successful completion of your projects.

For additional information, please contact Bob Stroh ([rstroh@leightongroup.com](mailto:rstroh@leightongroup.com))

Website link: <http://www.leightongroup.com>

- [Dr. Pat Abbott](#) — SDSU Professor of Geology, Emeritus
- Marty and Sherry Bloom
- Joe Corones
- Greg Cranham — Consulting Geologist
- Damon DeYoung — Battelle
- Dr. Margaret R. Eggers, CHG — [Eggers Environmental, Inc.](#)
- Karen Evans for Jim Evans (Deceased)
- Phil Farquharson — [Geology Guy](#)
- Carolyn Glockhoff — [Caro-Lion Enterprises](#)
- Dr. Sarah Gray
- Blayne Hartman — [Hartman Environmental Geoscience](#)
- Rob Hawk
- Dr. Monte Marshall—SDSU Prof. of Geology & Geophysics, Emeritus
- [John Minch](#)
- [James R. Ashby/Mission Geoscience, Inc.](#)
- Jennifer Morton — [Terramar Environmental](#)
- Monte and Diane Murbach — [Murbach Geotech](#)
- [Pacific Drilling Co.](#)
- Peet's Coffee and Tea Solana Beach
- Les Reed—Geotechnical Exploration Inc.
- Rothman Creative (Fritz Rothman 619-278-1771)
- Gerald Shiller
- [Scott Snyder](#)
- [Southwest Geophysics, Inc.](#)

- Tom Lamb
- [Leighton Group](#)
- Lowell A. Lindsay & Diana Lindsay — [Sunbelt Publications/AESE](#)
- Cari Gomes – [Pinao Consulting](#) – [Absolution Brewing Company](#)
- Dan Gomes – Absolution by the Sea  
<https://www.absolutionbrewingcompany.com>
- David and Jan Steller
- Dr. Anne Sturz
- Mary Walke
- Carole L. Ziegler
- Vic Camp

**Add yourself to this list** - Sponsors, Corporate Sponsors, and Patrons provide a significant portion of SDGS's and SDAG's operating and scholarship budgets. SDGS is a 501(c)3 public benefit nonprofit educational corporation. For more information, please see our Sponsorship Form <http://www.sandiegogeologists.org/SponsorForm.pdf>.